

## Integrin $\alpha$ 5 Monoclonal Antibody

|                              |   |
|------------------------------|---|
| <b>Catalog No :</b>          | YM1054  |
| <b>Reactivity :</b>          | Human;Mouse;Rat;Bovine  |
| <b>Applications :</b>        | WB;FCM  |
| <b>Target :</b>              | Integrin $\alpha$ 5   |
| <b>Fields :</b>              | >>Phagosome;>>PI3K-Akt signaling pathway;>>Focal adhesion;>>ECM-receptor interaction;>>Hematopoietic cell lineage;>>Regulation of actin cytoskeleton;>>Bacterial invasion of epithelial cells;>>Shigellosis;>>Pertussis;>>Yersinia infection;>>Human papillomavirus infection;>>Herpes simplex virus 1 infection;>>Proteoglycans in cancer;>>MicroRNAs in cancer;>>Hypertrophic cardiomyopathy;>>Arrhythmogenic right ventricular cardiomyopathy;>>Dilated cardiomyopathy |
| <b>Gene Name :</b>           | ITGA5   |
| <b>Protein Name :</b>        | Integrin alpha-5  |
| <b>Human Gene Id :</b>       | 3678  |
| <b>Human Swiss Prot No :</b> | P08648  |
| <b>Mouse Gene Id :</b>       | 16402   |
| <b>Mouse Swiss Prot No :</b> | P11688  |
| <b>Immunogen :</b>           | Purified recombinant human Integrin $\alpha$ 5 (N-terminus) protein fragments expressed in E.coli.  |
| <b>Specificity :</b>         | Integrin $\alpha$ 5 Monoclonal Antibody detects endogenous levels of Integrin $\alpha$ 5 protein.   |
| <b>Formulation :</b>         | Liquid in PBS containing 50% glycerol, 0.5% BSA and 0.02% sodium azide.   |
| <b>Source :</b>              | Monoclonal, Mouse   |

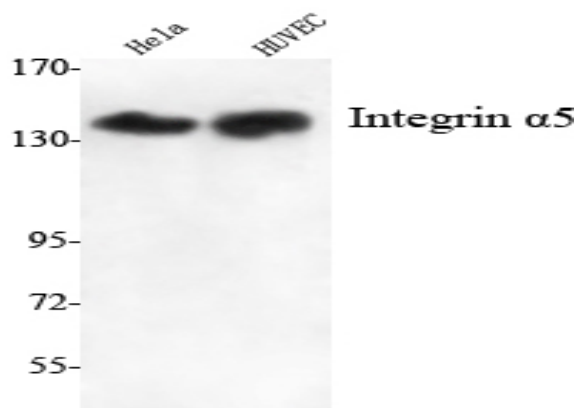
---

|                               |  |
|-------------------------------|--|
| <b>Dilution :</b>             | WB 1:1000 - 1:2000. Flow cytometry: 1:100 - 1:200. Not yet tested in other applications.   |
| <b>Purification :</b>         | Affinity purification  |
| <b>Concentration :</b>        | 1 mg/ml  |
| <b>Storage Stability :</b>    | -15°C to -25°C/1 year(Do not lower than -25°C)   |
| <b>Molecularweight :</b>      | 115kD  |
| <b>Cell Pathway :</b>         | Focal adhesion;ECM-receptor interaction;Hematopoietic cell lineage;Regulates Actin and Cytoskeleton;Hypertrophic cardiomyopathy (HCM);Arrhythmogenic right ventricular cardiomyopathy (ARVC);Dilated car   |
| <b>Background :</b>           | integrin subunit alpha 5(ITGA5) Homo sapiens The product of this gene belongs to the integrin alpha chain family. Integrins are heterodimeric integral membrane proteins composed of an alpha subunit and a beta subunit that function in cell surface adhesion and signaling. The encoded preproprotein is proteolytically processed to generate light and heavy chains that comprise the alpha 5 subunit. This subunit associates with the beta 1 subunit to form a fibronectin receptor. This integrin may promote tumor invasion, and higher expression of this gene may be correlated with shorter survival time in lung cancer patients. Note that the integrin alpha 5 and integrin alpha V subunits are encoded by distinct genes. [provided by RefSeq, Oct 2015], |
| <b>Function :</b>             | function:Integrin alpha-5/beta-1 is a receptor for fibronectin and fibrinogen. It recognizes the sequence R-G-D in its ligands. In case of HIV-1 infection, the interaction with extracellular viral Tat protein seems to enhance angiogenesis in Kaposi's sarcoma lesions.,similarity:Belongs to the integrin alpha chain family.,similarity:Contains 7 FG-GAP repeats.,subunit:Heterodimer of an alpha and a beta subunit. The alpha subunit is composed of an heavy and a light chain linked by a disulfide bond. Alpha-5 associates with beta-1. Interacts with HPS5 and NISCH. Interacts with HIV-1 Tat. Interacts with RAB21.,   |
| <b>Subcellular Location :</b> | Membrane; Single-pass type I membrane protein. Cell junction, focal adhesion . Cell surface .  |
| <b>Expression :</b>           | Liver,Placenta,  |

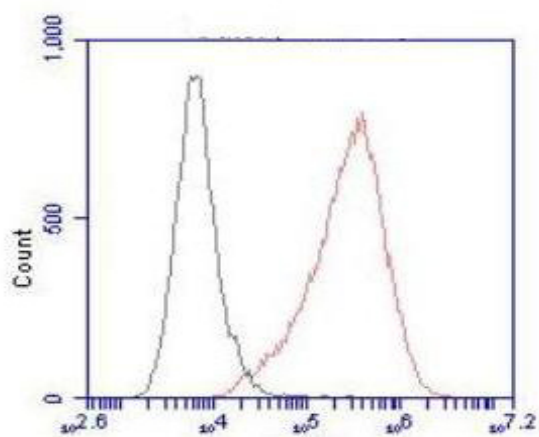
---

## Products Images

(kD)



Western Blot analysis using Integrin  $\alpha 5$  Monoclonal Antibody against HeLa, HUVEC cell lysate.



Flow cytometric analysis of HeLa cells stained with Integrin  $\alpha 5$  Monoclonal Antibody (red), followed by FITC-conjugated goat anti-mouse IgG. Black line histogram represents the isotype control, normal mouse IgG.