

CBR1 mouse mAb

Catalog No :	YM1342
Reactivity :	Human
Applications :	WB;ICC
Target :	CBR1
Fields :	>>Arachidonic acid metabolism;>>Folate biosynthesis;>>Metabolism of xenobiotics by cytochrome P450;>>Metabolic pathways;>>Chemical carcinogenesis - DNA adducts;>>Chemical carcinogenesis - reactive oxygen species
Gene Name :	cbr1
Human Gene Id :	873
Human Swiss Prot No :	P16152
Mouse Swiss Prot No :	P48758
Immunogen :	Purified recombinant human CBR1 protein fragments expressed in E.coli
Specificity :	This antibody detects endogenous levels of CBR1 and does not cross-react with related proteins.
Formulation :	Liquid in PBS containing 50% glycerol, 0.5% BSA and 0.02% sodium azide.
Source :	Monoclonal, Mouse
Dilution :	wb 1:1000 icc 1:100
Purification :	The antibody was affinity-purified from mouse ascites by affinity-chromatography using epitope-specific immunogen.
Concentration :	1 mg/ml
Storage Stability :	-15°C to -25°C/1 year(Do not lower than -25°C)

Observed Band : 30kD

Cell Pathway : Arachidonic acid metabolism;

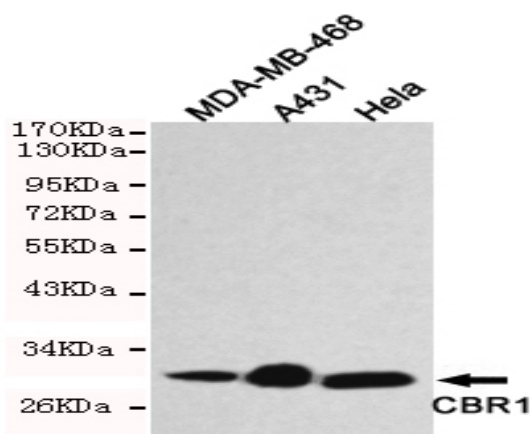
Background : The protein encoded by this gene belongs to the short-chain dehydrogenases/reductases (SDR) family, which function as NADPH-dependent oxidoreductases having wide specificity for carbonyl compounds, such as quinones, prostaglandins, and various xenobiotics. Alternatively spliced transcript variants have been found for this gene. [provided by RefSeq, Nov 2013],

Function : catalytic activity:(13E)-(15S)-11-alpha,15-dihydroxy-9-oxoprost-13-enoate + NADP(+) = (13E)-11-alpha-hydroxy-9,15-dioxoprost-13-enoate + NADPH.,catalytic activity:(5Z,13E)-(15S)-9-alpha,11-alpha,15-trihydroxyprosta-5,13-dienoate + NADP(+) = (5Z,13E)-(15S)-11-alpha,15-dihydroxy-9-oxoprosta-5,13-dienoate + NADPH.,catalytic activity:R-CHOH-R' + NADP(+) = R-CO-R' + NADPH.,function:Catalyzes the reduction of a wide variety of carbonyl compounds including the antitumor anthracycline antibiotics. Can convert prostaglandin E2 to prostaglandin F2-alpha.,similarity:Belongs to the short-chain dehydrogenases/reductases (SDR) family.,subunit:Monomer.,

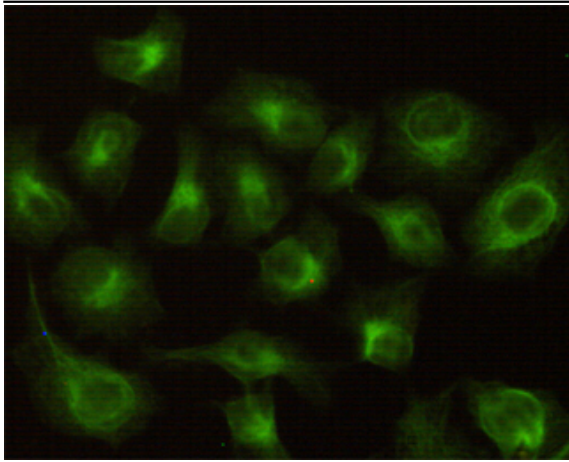
Subcellular Location : Cytoplasm .

Expression : Expressed in kidney (at protein level).

Products Images



Western blot detection of CBR1 in HeLa,A431 and MDA-MB-468 cell lysates using CBR1 mouse mAb (1:1000 diluted).Predicted band size:30KDa,Observed band size:30KDa.



Immunocytochemistry stain of HeLa using CBR1 mouse mAb (1:100).