

## HLX1 Monoclonal Antibody

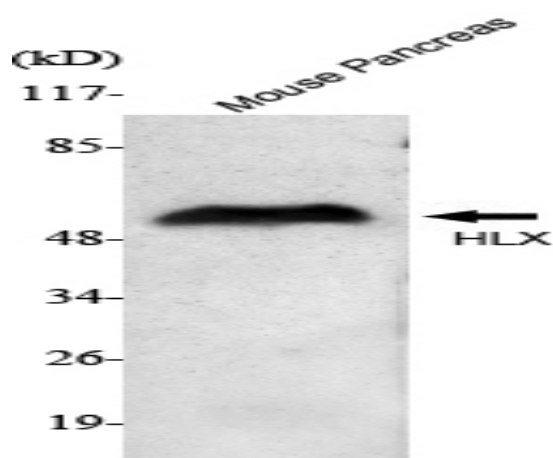
<b>Catalog No :</b>	YM1043
<b>Reactivity :</b>	Human;Mouse;Rat;Bovine;Dog;Pig
<b>Applications :</b>	WB
<b>Target :</b>	HLX1
<b>Gene Name :</b>	HLX
<b>Protein Name :</b>	H2.0-like homeobox protein
<b>Human Gene Id :</b>	3142
<b>Human Swiss Prot No :</b>	Q14774
<b>Mouse Gene Id :</b>	15284
<b>Mouse Swiss Prot No :</b>	Q61670
<b>Rat Gene Id :</b>	364069
<b>Rat Swiss Prot No :</b>	A0JPN1
<b>Immunogen :</b>	Purified recombinant human HLX1 (C-terminus) protein fragments expressed in E.coli.
<b>Specificity :</b>	HLX1 Monoclonal Antibody detects endogenous levels of HLX1 protein.
<b>Formulation :</b>	Liquid in PBS containing 50% glycerol, 0.5% BSA and 0.02% sodium azide.
<b>Source :</b>	Monoclonal, Mouse
<b>Dilution :</b>	WB 1:1000 - 1:2000. Not yet tested in other applications.
<b>Purification :</b>	Affinity purification

---

<b>Concentration :</b>	1 mg/ml
<b>Storage Stability :</b>	-15°C to -25°C/1 year(Do not lower than -25°C)
<b>Molecularweight :</b>	51kD
<b>Background :</b>	function:Transcription factor required for TBX21/T-bet-dependent maturation of Th1 cells as well as maintenance of Th1-specific gene expression. Involved in embryogenesis and hematopoiesis.,sequence caution:Translation N-terminally extended.,similarity:Belongs to the H2.0 homeobox family.,similarity:Contains 1 homeobox DNA-binding domain.,tissue specificity:Low level in normal B and T-cells, high level in activated lymphocytes and monocytes. Also found in thymus, tonsil, bone marrow, developing vessels, and fetal brain.,
<b>Function :</b>	function:Transcription factor required for TBX21/T-bet-dependent maturation of Th1 cells as well as maintenance of Th1-specific gene expression. Involved in embryogenesis and hematopoiesis.,sequence caution:Translation N-terminally extended.,similarity:Belongs to the H2.0 homeobox family.,similarity:Contains 1 homeobox DNA-binding domain.,tissue specificity:Low level in normal B and T-cells, high level in activated lymphocytes and monocytes. Also found in thymus, tonsil, bone marrow, developing vessels, and fetal brain.,
<b>Subcellular Location :</b>	Nucleus .
<b>Expression :</b>	Low level in normal B and T-cells, high level in activated lymphocytes and monocytes. Also found in thymus, tonsil, bone marrow, developing vessels, and fetal brain.

---

## Products Images



Western Blot analysis using HLX1 Monoclonal Antibody against Mouse pancreas cell lysate.