

Rab2 mouse mAb

Catalog No :	YM1280
Reactivity :	Human
Applications :	WB;ICC
Target :	Rab2
Fields :	>>AMPK signaling pathway
Gene Name :	rab2a
Human Gene Id :	5862
Human Swiss Prot No :	P61019
Mouse Swiss Prot No :	P53994
Immunogen :	Purified recombinant human Rab2 protein fragments expressed in E.coli.
Specificity :	This antibody detects endogenous levels of Rab2 and does not cross-react with related proteins.
Formulation :	Liquid in PBS containing 50% glycerol, 0.5% BSA and 0.02% sodium azide.
Source :	Monoclonal, Mouse
Dilution :	wb 1:1000 icc 1:200
Purification :	The antibody was affinity-purified from mouse ascites by affinity-chromatography using epitope-specific immunogen.
Concentration :	1 mg/ml
Storage Stability :	-15°C to -25°C/1 year(Do not lower than -25°C)
Observed Band :	24kD

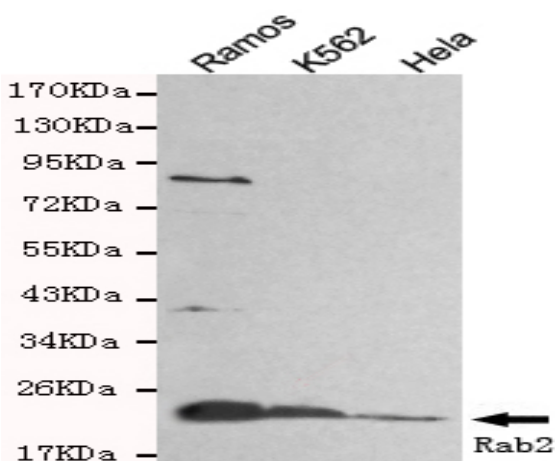
Background : The protein encoded by this gene belongs to the Rab family, members of which are small molecular weight guanosine triphosphatases (GTPases) that contain highly conserved domains involved in GTP binding and hydrolysis. The Rabs are membrane-bound proteins, involved in vesicular fusion and trafficking. This protein is a resident of pre-Golgi intermediates, and is required for protein transport from the endoplasmic reticulum (ER) to the Golgi complex. Alternatively spliced transcript variants encoding different isoforms have been found for this gene. [provided by RefSeq, Oct 2011],

Function : function:Required for protein transport from the endoplasmic reticulum to the Golgi complex.,similarity:Belongs to the small GTPase superfamily. Rab family.,subcellular location:Identified by mass spectrometry in melanosome fractions from stage I to stage IV.,subunit:Interacts with PRKCI.,

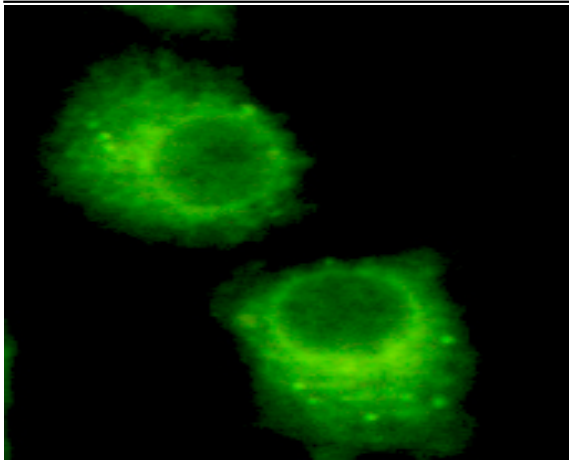
Subcellular Location : Endoplasmic reticulum-Golgi intermediate compartment membrane ; Lipid-anchor . Melanosome . Endoplasmic reticulum membrane ; Lipid-anchor . Golgi apparatus membrane ; Lipid-anchor . Cytoplasmic vesicle, secretory vesicle, acrosome . Localized in the Golgi apparatus in the round spermatids and in the acrosome in the elongating spermatid (By similarity). Identified by mass spectrometry in melanosome fractions from stage I to stage IV (PubMed:17081065). .

Expression : Brain, Skin,

Products Images



Western blot detection of Rab2 in HeLa, Ramos and K562 cell lysates and using Rab2 mouse mAb (1:800 diluted). Predicted band size: 24 kDa. Observed band size: 24 kDa.



Immunocytochemistry of HeLa cells using anti-Rab2 mouse mAb diluted 1:200