

## Protein Z Monoclonal Antibody

<b>Catalog No :</b>	YM0538
<b>Reactivity :</b>	Human
<b>Applications :</b>	WB;ELISA
<b>Target :</b>	Protein Z
<b>Gene Name :</b>	PROZ
<b>Protein Name :</b>	Vitamin K-dependent protein Z
<b>Human Gene Id :</b>	8858
<b>Human Swiss Prot No :</b>	P22891
<b>Mouse Swiss Prot No :</b>	Q9CQW3
<b>Immunogen :</b>	Purified recombinant fragment of Protein Z expressed in E. Coli.
<b>Specificity :</b>	Protein Z Monoclonal Antibody detects endogenous levels of Protein Z protein.
<b>Formulation :</b>	Liquid in PBS containing 50% glycerol, 0.5% BSA and 0.02% sodium azide.
<b>Source :</b>	Monoclonal, Mouse
<b>Dilution :</b>	WB 1:500 - 1:2000. ELISA: 1:10000. Not yet tested in other applications.
<b>Purification :</b>	Affinity purification
<b>Storage Stability :</b>	-15°C to -25°C/1 year(Do not lower than -25°C)
<b>Molecularweight :</b>	45kD
<b>P References :</b>	1. J Thromb Haemost. 2005 Mar;3(3):497-501. 2. Blood Coagul Fibrinolysis. 2008 Jan;19(1):23-5.

**Background :**

This gene encodes a liver vitamin K-dependent glycoprotein that is synthesized in the liver and secreted into the plasma. The encoded protein plays a role in regulating blood coagulation by complexing with protein Z-dependent protease inhibitor to directly inhibit activated factor X at the phospholipid surface. Deficiencies in this protein are associated with an increased risk of ischemic arterial diseases and fetal loss. Mutations in this gene are the cause of protein Z deficiency. Alternate splicing results in multiple transcript variants. [provided by RefSeq, Jan 2012],

**Function :**

caution:Although homologous with the vitamin K-dependent clotting factors, it has lost two of the essential catalytic residues and has no enzymatic activity.,function:Appears to assist hemostasis by binding thrombin and promoting its association with phospholipid vesicles.,PTM:The iron and 2-oxoglutarate dependent 3-hydroxylation of aspartate and asparagine is (R) stereospecific within EGF domains.,similarity:Belongs to the peptidase S1 family.,similarity:Contains 1 Gla (gamma-carboxy-glutamate) domain.,similarity:Contains 1 peptidase S1 domain.,similarity:Contains 2 EGF-like domains.,tissue specificity:Plasma.,

**Subcellular Location :**

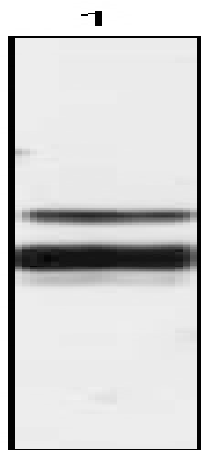
Secreted.

**Expression :**

Plasma.

## Products Images

180  
 170  
 160  
 150  
 140  
 130  
 120  
 110  
 100  
 90  
 80  
 70  
 60  
 50  
 40  
 30  
 20  
 10  
 0



Western Blot analysis using Protein Z Monoclonal Antibody against human plasma (1).