

PP2B-A α Monoclonal Antibody

Catalog No :	YM1080
Reactivity :	Human;Mouse;Rat
Applications :	WB
Target :	PP2B-A α
Fields :	>>MAPK signaling pathway;>>Calcium signaling pathway;>>cGMP-PKG signaling pathway;>>Oocyte meiosis;>>Cellular senescence;>>Wnt signaling pathway;>>Axon guidance;>>VEGF signaling pathway;>>Osteoclast differentiation;>>C-type lectin receptor signaling pathway;>>Natural killer cell mediated cytotoxicity;>>Th1 and Th2 cell differentiation;>>Th17 cell differentiation;>>T cell receptor signaling pathway;>>B cell receptor signaling pathway;>>Long-term potentiation;>>Glutamatergic synapse;>>Dopaminergic synapse;>>Oxytocin signaling pathway;>>Glucagon signaling pathway;>>Renin secretion;>>Alzheimer disease;>>Amyotrophic lateral sclerosis;>>Prion disease;>>Pathways of neurodegeneration - multiple diseases;>>Amphetamine addiction;>>Tuberculosis;>>Human cytomegalovirus infection;>>Human T-cell leukemia virus 1 infection;>>Kaposi sarcoma-associated herpesvirus infection;>>Human immunodeficiency virus 1 infection;>>PD-L1 expression and PD-1 checkpoint pathway in cancer;>>Lipid and atherosclerosis
Gene Name :	PPP3CA
Protein Name :	Serine/threonine-protein phosphatase 2B catalytic subunit alpha isoform
Human Gene Id :	5530
Human Swiss Prot No :	Q08209
Mouse Gene Id :	19055
Mouse Swiss Prot No :	P63328
Rat Gene Id :	24674
Rat Swiss Prot No :	P63329

Immunogen :	<u>Purified recombinant human PP2B-Aα protein fragments expressed in E.coli.</u>
Specificity :	<u>PP2B-Aα Monoclonal Antibody detects endogenous levels of PP2B-Aα protein.</u>
Formulation :	<u>Liquid in PBS containing 50% glycerol, 0.5% BSA and 0.02% sodium azide.</u>
Source :	<u>Monoclonal, Mouse</u>
Dilution :	<u>WB 1:1000 - 1:2000. Not yet tested in other applications.</u>
Purification :	<u>Affinity purification</u>
Concentration :	<u>1 mg/ml</u>
Storage Stability :	<u>-15°C to -25°C/1 year(Do not lower than -25°C)</u>
Molecularweight :	<u>59kD</u>
Cell Pathway :	<u>MAPK_ERK_Growth;MAPK_G_Protein;Calcium;Oocyte meiosis;Apoptosis_Inhibition;Apoptosis_Mitochondrial;Apoptosis_Overview;WNT;WNT-T CELLAxon guidance;VEGF;Natural killer cell mediated cytotoxicity;T_Cell_</u>
Background :	<u>catalytic activity:A phosphoprotein + H(2)O = a protein + phosphate.,cofactor:Binds 1 Fe(3+) ion per subunit.,cofactor:Binds 1 zinc ion per subunit.,function:Calcium-dependent, calmodulin-stimulated protein phosphatase. This subunit may have a role in the calmodulin activation of calcineurin. Dephosphorylates HSPB1 and SSH1.,online information:Calcineurin entry,similarity:Belongs to the PPP phosphatase family.,similarity:Belongs to the PPP phosphatase family. PP-2B subfamily.,subcellular location:Colocalizes with ACTN1 and MYOZ2 at the Z line in heart and skeletal muscle.,subunit:Composed of two components (A and B), the A component is the catalytic subunit and the B component confers calcium sensitivity. Interacts with TORC2/CRTC2, MYOZ1, MYOZ2 and MYOZ3.,</u>
Function :	<u>catalytic activity:A phosphoprotein + H(2)O = a protein + phosphate.,cofactor:Binds 1 Fe(3+) ion per subunit.,cofactor:Binds 1 zinc ion per subunit.,function:Calcium-dependent, calmodulin-stimulated protein phosphatase. This subunit may have a role in the calmodulin activation of calcineurin. Dephosphorylates HSPB1 and SSH1.,online information:Calcineurin entry,similarity:Belongs to the PPP phosphatase family.,similarity:Belongs to the PPP phosphatase family. PP-2B subfamily.,subcellular location:Colocalizes with ACTN1 and MYOZ2 at the Z line in heart and skeletal muscle.,subunit:Composed of two components (A and B), the A component is the catalytic subunit and the B component confers calcium sensitivity. Interacts with TORC2/CRTC2, MYOZ1, MYOZ2 and MYOZ3.,</u>

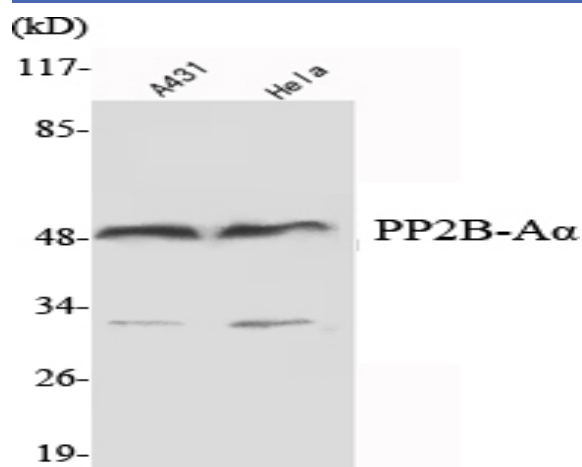
Subcellular Location :

Cytoplasm . Cell membrane ; Peripheral membrane protein . Cell membrane, sarcolemma . Cytoplasm, myofibril, sarcomere, Z line . Cell projection, dendritic spine . Colocalizes with ACTN1 and MYOZ2 at the Z line in heart and skeletal muscle (By similarity). Recruited to the cell membrane by scaffold protein AKAP5 following L-type Ca(2+)-channel activation (PubMed:22343722). .

Expression :

Expressed in keratinocytes (at protein level) (PubMed:29043977). Expressed in lymphoblasts (at protein level) (PubMed:30254215).

Products Images



Western Blot analysis using PP2B-A α Monoclonal Antibody against A431, HeLa cell lysate .