

p14ARF Monoclonal Antibody

Catalog No :	YM0494
Reactivity :	Human;Mouse;Rat
Applications :	WB;IHC;IF;ELISA
Target :	p14ARF
Gene Name :	CDKN2A
Protein Name :	Cyclin-dependent kinase inhibitor 2A isoform 4
Human Gene Id :	1029
Human Swiss Prot No :	Q8N726
Mouse Gene Id :	12578
Mouse Swiss Prot No :	Q64364
Rat Swiss Prot No :	Q8QZZ9
Immunogen :	Purified recombinant fragment of p16 expressed in E. Coli.
Specificity :	p16 Monoclonal Antibody detects endogenous levels of p16 protein.
Formulation :	Liquid in PBS containing 50% glycerol, 0.5% BSA and 0.02% sodium azide.
Source :	Monoclonal, Mouse
Dilution :	WB 1:500 - 1:2000. IHC 1:200 - 1:1000. ELISA: 1:10000.. IF 1:50-200
Purification :	Affinity purification
Storage Stability :	-15°C to -25°C/1 year(Do not lower than -25°C)
Molecularweight :	14kD

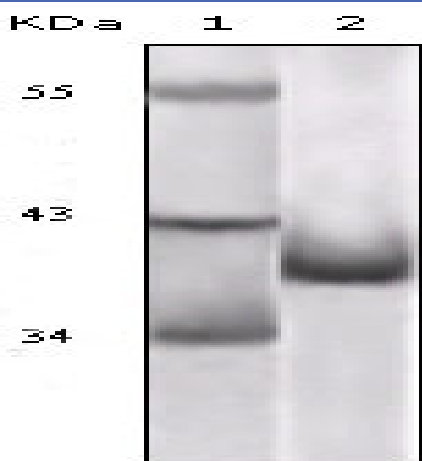
Cell Pathway : Stem cell pathway; Cell Cycle

P References :

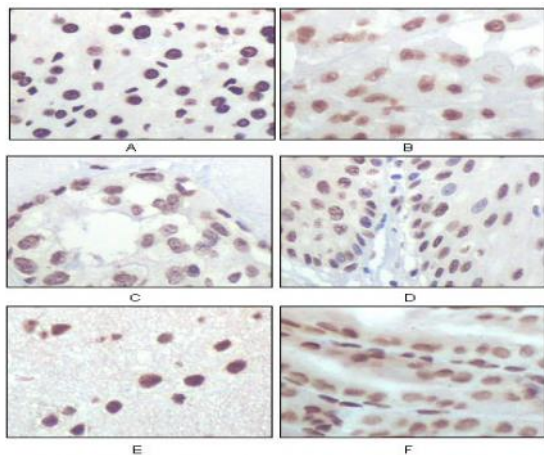
1. Hunter, T. 1993. Cell 75: 839-841.
2. Sherr, C.J. 1993. Cell 73: 1059-1065.
3. El-Deiry, W.S., et al. 1993. Cell 75: 817-825.

Subcellular Location : Nucleus, nucleolus . Nucleus, nucleoplasm .; [Isoform smARF]: Mitochondrion .

Products Images



Western Blot analysis using p16 Monoclonal Antibody against truncated p16 recombinant protein.



Immunohistochemistry analysis of paraffin-embedded rat liver tissue (A), human brain tumor (B), breast cancer (C), esophageal epithelium tissue (D), mouse brain tissue (E) and stomach tissue (F), showing nuclear localization with DAB staining using p16 Mon