

Myoglobin Monoclonal Antibody

Catalog No :	YM0462
Reactivity :	Human
Applications :	WB;IHC;IF;ELISA
Target :	Myoglobin
Gene Name :	MB
Protein Name :	Myoglobin
Human Gene Id :	4151
Human Swiss Prot No :	P02144
Mouse Swiss Prot No :	P04247
Immunogen :	Purified recombinant fragment of Myoglobin expressed in E. Coli.
Specificity :	Myoglobin Monoclonal Antibody detects endogenous levels of Myoglobin protein.
Formulation :	Liquid in PBS containing 50% glycerol, 0.5% BSA and 0.02% sodium azide.
Source :	Monoclonal, Mouse
Dilution :	WB 1:500 - 1:2000. IHC 1:200 - 1:1000. ELISA: 1:10000.. IF 1:50-200
Purification :	Affinity purification
Concentration :	1 mg/ml
Storage Stability :	-15°C to -25°C/1 year(Do not lower than -25°C)
Molecularweight :	17kD

P References :

1. George A. Ordway, Daniel J. Garry. *J. Exp. Biol.*, Sep 2004; 207: 3441-3446.
2. Ulrich Floel, Tim Laussmann, Axel Goecke. *Circ. Res.*, Apr 2005; 96: e68 - e75.

Background :

This gene encodes a member of the globin superfamily and is expressed in skeletal and cardiac muscles. The encoded protein is a haemoprotein contributing to intracellular oxygen storage and transcellular facilitated diffusion of oxygen. At least three alternatively spliced transcript variants encoding the same protein have been reported. [provided by RefSeq, Jul 2008],

Function :

function:Serves as a reserve supply of oxygen and facilitates the movement of oxygen within muscles.,similarity:Belongs to the globin family.,

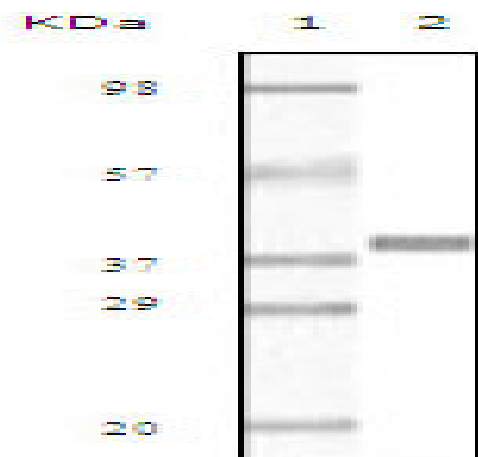
Subcellular Location :

extracellular exosome,

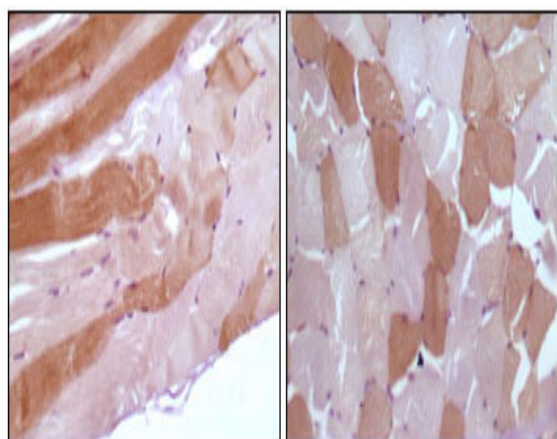
Expression :

Heart,Skeletal muscle,

Products Images



Western Blot analysis using Myoglobin Monoclonal Antibody against truncated Myoglobin recombinant protein.



Immunohistochemistry analysis of paraffin-embedded human skeletal muscle tissue showing cytoplasmic localization with DAB staining using Myoglobin Monoclonal Antibody.