

**TORC3 Monoclonal Antibody**

<b>Catalog No :</b>	YM0626
<b>Reactivity :</b>	Human;Monkey
<b>Applications :</b>	WB;IHC;IF;ELISA
<b>Target :</b>	TORC3
<b>Fields :</b>	>>Human T-cell leukemia virus 1 infection
<b>Gene Name :</b>	CRTC3
<b>Protein Name :</b>	CREB-regulated transcription coactivator 3
<b>Human Gene Id :</b>	64784
<b>Human Swiss Prot No :</b>	Q6UUV7
<b>Mouse Swiss Prot No :</b>	Q91X84
<b>Immunogen :</b>	Purified recombinant fragment of human TORC3 expressed in E. Coli.
<b>Specificity :</b>	TORC3 Monoclonal Antibody detects endogenous levels of TORC3 protein.
<b>Formulation :</b>	Liquid in PBS containing 50% glycerol, 0.5% BSA and 0.02% sodium azide.
<b>Source :</b>	Monoclonal, Mouse
<b>Dilution :</b>	WB 1:500 - 1:2000. IHC 1:200 - 1:1000. IF 1:200 - 1:1000. ELISA: 1:10000. Not yet tested in other applications.
<b>Purification :</b>	Affinity purification
<b>Storage Stability :</b>	-15°C to -25°C/1 year(Do not lower than -25°C)
<b>Molecularweight :</b>	67kD

**P References :**

1. Mod Pathol. 2009 Dec;22(12):1575-81.
  2. Genes Chromosomes Cancer. 2008 Mar;47(3):203-6.
- 

**Background :**

This gene is a member of the CREB regulated transcription coactivator gene family. This family regulates CREB-dependent gene transcription in a phosphorylation-independent manner and may be selective for cAMP-responsive genes. The protein encoded by this gene may induce mitochondrial biogenesis and attenuate catecholamine signaling in adipose tissue. A translocation event between this gene and Notch coactivator mastermind-like gene 2, which results in a fusion protein, has been reported in mucoepidermoid carcinomas. Alternative splicing results in multiple transcript variants that encode different protein isoforms. [provided by RefSeq, Jul 2012],

---

**Function :**

function:Transcriptional coactivator for CREB1 which activates transcription through both consensus and variant cAMP response element (CRE) sites. Acts as a coactivator, in the SIK/TORC signaling pathway, being active when dephosphorylated and acts independently of CREB1 'Ser-133' phosphorylation. Enhances the interaction of CREB1 with TAF4. Regulates the expression of specific CREB-activated genes such as the steroidogenic gene, StAR. Potent coactivator of PPARGC1A and inducer of mitochondrial biogenesis in muscle cells. Also coactivator for TAX activation of the human T-cell leukemia virus type 1 (HTLV-1) long terminal repeats (LTR).,similarity:Belongs to the TORC family.,subcellular location:Appears to be mainly nuclear.,subunit:Binding, as a tetramer, through its N-terminal region, with the bZIP domain of CREB1 enhances recruitment of TAF4 to the promoter. 'Arg-314' in the bZIP domai

---

**Subcellular Location :**

Nucleus . Cytoplasm . Appears to be mainly nuclear (PubMed:15454081). Translocates to the nucleus following adenylyl cyclase or MAP kinase activation (PubMed:30611118). .

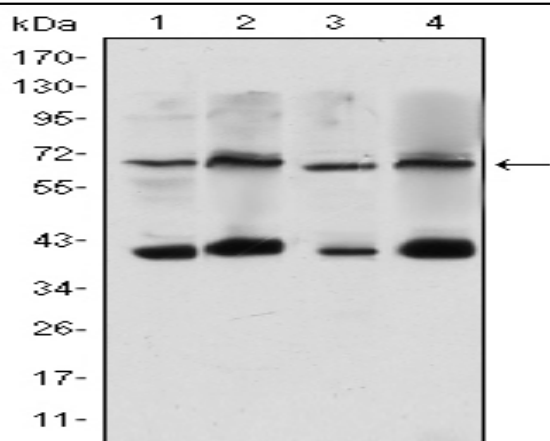
---

**Expression :**

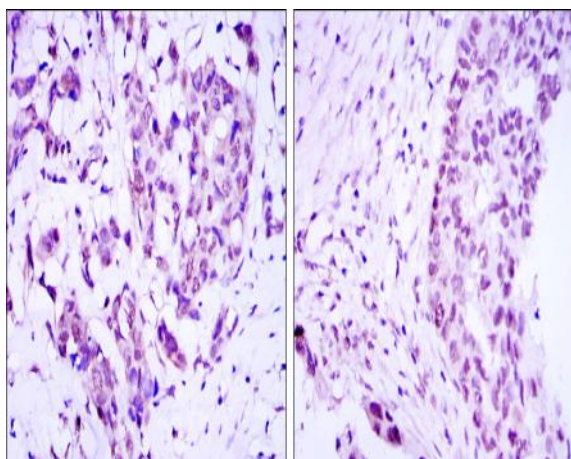
Predominantly expressed in B and T lymphocytes. Highest levels in lung. Also expressed in brain, colon, heart, kidney, ovary, and prostate. Weak expression in liver, pancreas, muscle, small intestine, spleen and stomach.

---

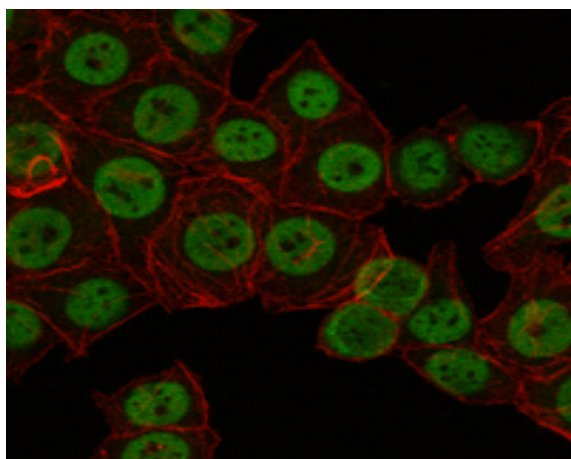
## Products Images



Western Blot analysis using TORC3 Monoclonal Antibody against HeLa (1), Jurkat (2), Cos7 (3) and MCF-7 (4) cell lysate.



Immunohistochemistry analysis of paraffin-embedded breast cancer (left) and ovarian cancer (right) with DAB staining using TORC3 Monoclonal Antibody.



Immunofluorescence analysis of NTERA-2 cells using TORC3 Monoclonal Antibody (green). Red: Actin filaments have been labeled with Alexa Fluor-555 phalloidin.

