

KLHL1 Monoclonal Antibody

Catalog No :	YM0397
Reactivity :	Human
Applications :	WB;IF;ELISA
Target :	KLHL1
Gene Name :	KLHL1
Protein Name :	Kelch-like protein 1
Human Gene Id :	57626
Human Swiss Prot No :	Q9NR64
Mouse Swiss Prot No :	Q9JI74
Immunogen :	Purified recombinant fragment of human KLHL1 expressed in E. Coli.
Specificity :	KLHL1 Monoclonal Antibody detects endogenous levels of KLHL1 protein.
Formulation :	Liquid in PBS containing 50% glycerol, 0.5% BSA and 0.02% sodium azide.
Source :	Monoclonal, Mouse
Dilution :	WB 1:500 - 1:2000. IF 1:200 - 1:1000. ELISA: 1:10000. Not yet tested in other applications.
Purification :	Affinity purification
Storage Stability :	-15°C to -25°C/1 year(Do not lower than -25°C)
Molecularweight :	83kD
P References :	1. DNA Res. 2000 Apr 28;7(2):143-50. 2. Nat Genet. 2004 Jan;36(1):40-5. 3. Science. 2005 Mar 11;307(5715):1621-5.

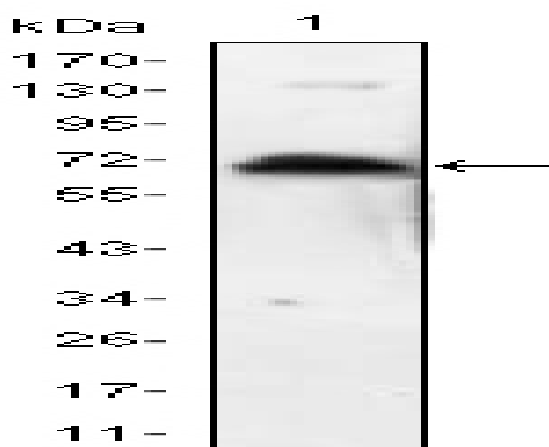
Background : The KLHL1 protein belongs to a family of actin-organizing proteins related to Drosophila Kelch (Nemes et al., 2000 [PubMed 10888605]).[supplied by OMIM, Feb 2010],

Function : function:May play a role in organizing the actin cytoskeleton of the brain cells.,similarity:Contains 1 BTB (POZ) domain.,similarity:Contains 6 Kelch repeats.,tissue specificity:Highly expressed in brain.,

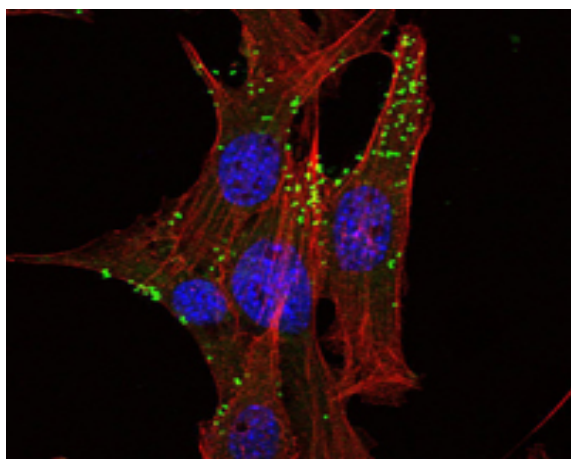
Subcellular Location : Cytoplasm, cytoskeleton.

Expression : Highly expressed in brain.

Products Images



Western Blot analysis using KLHL1 Monoclonal Antibody antibody against KLHL1 recombinant protein.



Immunofluorescence analysis of NIH/3T3 cells using KLHL1 Monoclonal Antibody (green). Red: Actin filaments have been labeled with Alexa Fluor-555 phalloidin.