

KLF15 Monoclonal Antibody

Catalog No :	YM0396
Reactivity :	Human
Applications :	WB;ELISA
Target :	KLF15
Gene Name :	KLF15
Protein Name :	Krueppel-like factor 15
Human Gene Id :	28999
Human Swiss Prot No :	Q9UIH9
Mouse Swiss Prot No :	Q9EPW2
Immunogen :	Purified recombinant fragment of human KLF15 expressed in E. Coli.
Specificity :	KLF15 Monoclonal Antibody detects endogenous levels of KLF15 protein.
Formulation :	Liquid in PBS containing 50% glycerol, 0.5% BSA and 0.02% sodium azide.
Source :	Monoclonal, Mouse
Dilution :	WB 1:500 - 1:2000. ELISA: 1:10000. Not yet tested in other applications.
Purification :	Affinity purification
Storage Stability :	-15°C to -25°C/1 year(Do not lower than -25°C)
Molecularweight :	44kD
P References :	1. Mol Cell Biol. 2000 Oct;20(19):7319-31. 2. Diabetologia. 2005 Jul;48(7):1315-22.

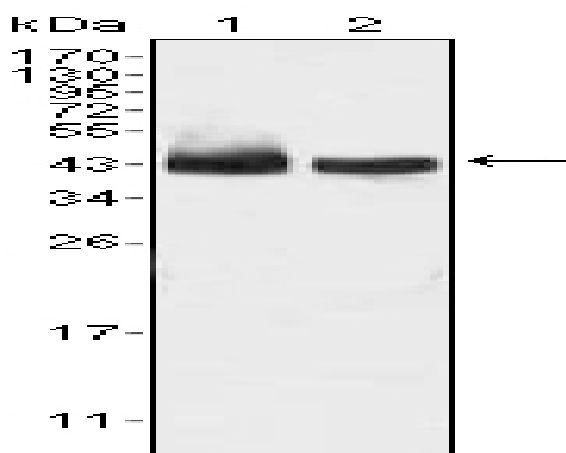
Background : function:Transcriptional activator. Binds to the GA element of the CLCNKA promoter.,similarity:Belongs to the Sp1 C2H2-type zinc-finger protein family.,similarity:Contains 3 C2H2-type zinc fingers.,tissue specificity:Highly expressed in liver, followed by heart, skeletal muscle, and kidney. Not expressed in bone marrow or lymphoid tissues.,

Function : function:Transcriptional activator. Binds to the GA element of the CLCNKA promoter.,similarity:Belongs to the Sp1 C2H2-type zinc-finger protein family.,similarity:Contains 3 C2H2-type zinc fingers.,tissue specificity:Highly expressed in liver, followed by heart, skeletal muscle, and kidney. Not expressed in bone marrow or lymphoid tissues.,

Subcellular Location : Nucleus .

Expression : Highly expressed in liver, skeletal muscle, and kidney. Expressed in cardiomyocytes. Expression is highly reduced in cardiac tissue of patients with non-ischemic cardiomyopathy and aortic aneurysm, and in glomerular disease. Not expressed in bone marrow or lymphoid tissues.

Products Images



Western Blot analysis using KLF15 Monoclonal Antibody against HepG2 (1) and SMMC-7721 (2) cell lysate.