

IL-34 Monoclonal Antibody

Catalog No :	YM0371
Reactivity :	Human
Applications :	WB;IF;FCM;ELISA
Target :	IL-34
Fields :	>>Cytokine-cytokine receptor interaction;>>Viral protein interaction with cytokine and cytokine receptor
Gene Name :	IL34
Protein Name :	Interleukin-34
Human Gene Id :	146433
Human Swiss Prot No :	Q6ZMJ4
Mouse Swiss Prot No :	Q8R1R4
Immunogen :	Purified recombinant fragment of human IL-34 expressed in E. Coli.
Specificity :	IL-34 Monoclonal Antibody detects endogenous levels of IL-34 protein.
Formulation :	Liquid in PBS containing 50% glycerol, 0.5% BSA and 0.02% sodium azide.
Source :	Monoclonal, Mouse
Dilution :	WB 1:500 - 1:2000. IF 1:200 - 1:1000. Flow cytometry: 1:200 - 1:400. ELISA: 1:10000. Not yet tested in other applications.
Purification :	Affinity purification
Storage Stability :	-15°C to -25°C/1 year(Do not lower than -25°C)
Molecularweight :	27kD

P References :

1. Strausberg RL, et al. Proc Natl Acad Sci U S A, 2002 Dec 24.
2. Lim J, et al. Cell, 2006 May 19.
3. Lin H, et al. Science, 2008 May 9.

Background :

Interleukin-34 is a cytokine that promotes the differentiation and viability of monocytes and macrophages through the colony-stimulating factor-1 receptor (CSF1R; MIM 164770) (Lin et al., 2008 [PubMed 18467591]).[supplied by OMIM, May 2008],

Function :

function:Cytokine that promotes the differentiation and viability of monocytes and macrophages. Stimulates phosphorylation of MAPK1/ERK2 AND MAPK3/ERK1. Ligand for colony-stimulating factor-1 receptor CSF1R.,similarity:Belongs to the IL-34 family.,subunit:Homodimer.,tissue specificity:Detected in the sinusoidal epithelium in the red pulp of spleen (at protein level). Predominantly expressed in spleen. Also detected in a range of other tissues including heart, brain, lung, liver, kidney, thymus, testis, ovary, small intestine, prostate and colon.,

Subcellular Location :

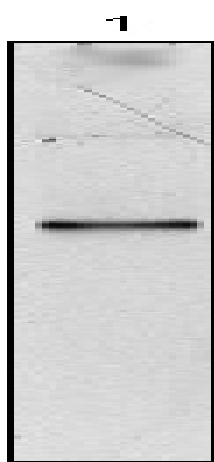
Secreted .

Expression :

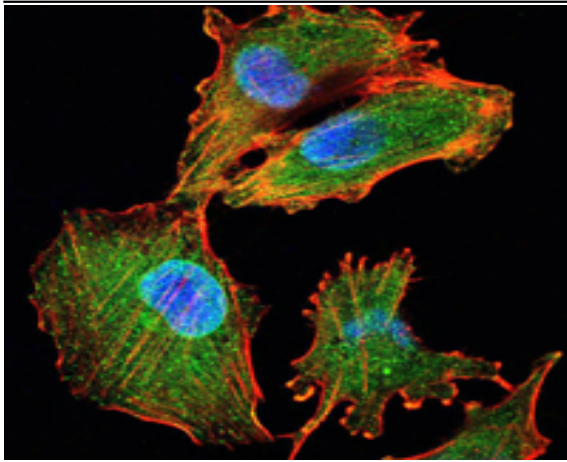
Detected in the sinusoidal epithelium in the red pulp of spleen (at protein level). Predominantly expressed in spleen. Also detected in a range of other tissues including heart, brain, lung, liver, kidney, thymus, testis, ovary, small intestine, prostate and colon.

Products Images

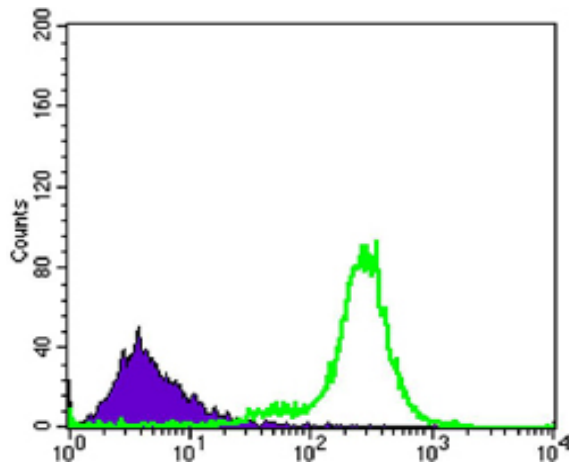
kDa
170-
150-
95-
72-
66-
48-
34-
28-
17-



Western Blot analysis using IL-34 Monoclonal Antibody against IL-34-hlgGfc transfected HEK293 cell lysate.



Immunofluorescence analysis of U251 cells using IL-34 Monoclonal Antibody (green). Blue: DRAQ5 fluorescent DNA dye. Red: Actin filaments have been labeled with Alexa Fluor-555 phalloidin.



Flow cytometric analysis of K562 cells using IL-34 Monoclonal Antibody (green) and negative control (purple).