

Protein Z Monoclonal Antibody

Catalog No :	YM0538
Reactivity :	Human
Applications :	WB;ELISA
Target :	Protein Z
Gene Name :	PROZ
Protein Name :	Vitamin K-dependent protein Z
Human Gene Id :	8858
Human Swiss Prot No :	P22891
Mouse Swiss Prot No :	Q9CQW3
Immunogen :	Purified recombinant fragment of Protein Z expressed in E. Coli.
Specificity :	Protein Z Monoclonal Antibody detects endogenous levels of Protein Z protein.
Formulation :	Liquid in PBS containing 50% glycerol, 0.5% BSA and 0.02% sodium azide.
Source :	Monoclonal, Mouse
Dilution :	WB 1:500 - 1:2000. ELISA: 1:10000. Not yet tested in other applications.
Purification :	Affinity purification
Storage Stability :	-15°C to -25°C/1 year(Do not lower than -25°C)
Molecularweight :	45kD
P References :	1. J Thromb Haemost. 2005 Mar;3(3):497-501. 2. Blood Coagul Fibrinolysis. 2008 Jan;19(1):23-5.

Background :

This gene encodes a liver vitamin K-dependent glycoprotein that is synthesized in the liver and secreted into the plasma. The encoded protein plays a role in regulating blood coagulation by complexing with protein Z-dependent protease inhibitor to directly inhibit activated factor X at the phospholipid surface. Deficiencies in this protein are associated with an increased risk of ischemic arterial diseases and fetal loss. Mutations in this gene are the cause of protein Z deficiency. Alternate splicing results in multiple transcript variants. [provided by RefSeq, Jan 2012],

Function :

caution:Although homologous with the vitamin K-dependent clotting factors, it has lost two of the essential catalytic residues and has no enzymatic activity.,function:Appears to assist hemostasis by binding thrombin and promoting its association with phospholipid vesicles.,PTM:The iron and 2-oxoglutarate dependent 3-hydroxylation of aspartate and asparagine is (R) stereospecific within EGF domains.,similarity:Belongs to the peptidase S1 family.,similarity:Contains 1 Gla (gamma-carboxy-glutamate) domain.,similarity:Contains 1 peptidase S1 domain.,similarity:Contains 2 EGF-like domains.,tissue specificity:Plasma.,

Subcellular Location :

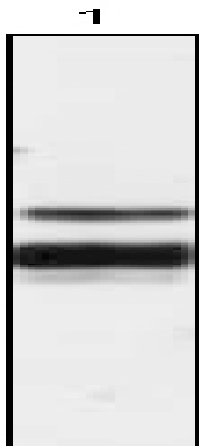
Secreted.

Expression :

Plasma.

Products Images

kDa
170—
130—
95—
72—
66—
43—
34—
26—
17—
11—



Western Blot analysis using Protein Z Monoclonal Antibody against human plasma (1).