

GKLF Monoclonal Antibody

Catalog No :	YM0308
Reactivity :	Human
Applications :	WB;IHC;IF;ELISA
Target :	GKLF
Fields :	>>Signaling pathways regulating pluripotency of stem cells;>>Chemical carcinogenesis - receptor activation
Gene Name :	KLF4
Protein Name :	Krueppel-like factor 4
Human Gene Id :	9314
Human Swiss Prot No :	O43474
Mouse Swiss Prot No :	Q60793
Immunogen :	Purified recombinant fragment of human GKLF expressed in E. Coli.
Specificity :	GKLF Monoclonal Antibody detects endogenous levels of GKLF protein.
Formulation :	Liquid in PBS containing 50% glycerol, 0.5% BSA and 0.02% sodium azide.
Source :	Monoclonal, Mouse
Dilution :	WB 1:500 - 1:2000. IHC 1:200 - 1:1000. IF 1:200 - 1:1000. ELISA: 1:10000. Not yet tested in other applications.
Purification :	Affinity purification
Storage Stability :	-15°C to -25°C/1 year(Do not lower than -25°C)
Molecularweight :	55kD

P References :

1. Mol Cell Proteomics. 2008 Mar;7(3):499-508.
2. J Cancer Res Clin Oncol. 2008 Aug;134(8):891-8.

Background :

This gene encodes a protein that belongs to the Kruppel family of transcription factors. The encoded zinc finger protein is required for normal development of the barrier function of skin. The encoded protein is thought to control the G1-to-S transition of the cell cycle following DNA damage by mediating the tumor suppressor gene p53. Mice lacking this gene have a normal appearance but lose weight rapidly, and die shortly after birth due to fluid evaporation resulting from compromised epidermal barrier function. Alternative splicing results in multiple transcript variants encoding different isoforms. [provided by RefSeq, Sep 2015],

Function :

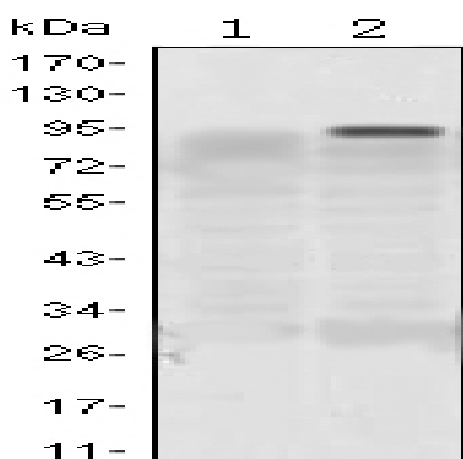
function:Transcription factor which acts as both an activator and repressor. Binds the CACCC core sequence. Binds to multiple sites in the 5'-flanking region of its own gene and can activate its own transcription. Required for establishing the barrier function of the skin and for postnatal maturation and maintenance of the ocular surface. Involved in the differentiation of epithelial cells and may also function in skeletal and kidney development.,similarity:Belongs to the krueppel C2H2-type zinc-finger protein family.,similarity:Contains 3 C2H2-type zinc fingers.,subunit:Interaction with the C-terminal domain of MUC1 enhances suppression of TP53/p53 transcription.,

Subcellular

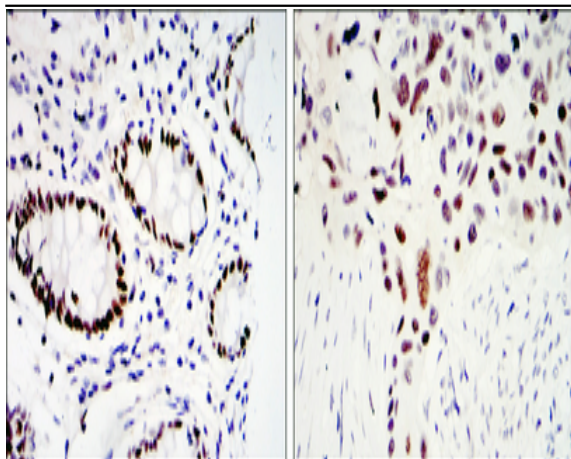
Nucleus.

Location :
Expression :

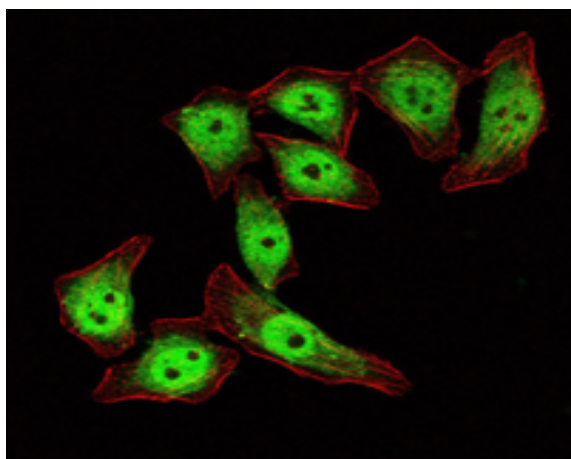
Cervix,Lung,Placenta,Substantia nigra,Tongue,

Products Images


Western Blot analysis using GKLF Monoclonal Antibody against HEK293 (1) and KLF4-hlgGfc transfected HEK293 (2) cell lysate.



Immunohistochemistry analysis of paraffin-embedded colon cancer tissues (left) and lung cancer tissues (right) with DAB staining using GKLf Monoclonal Antibody.



Immunofluorescence analysis of ECA109 cells using GKLf Monoclonal Antibody (green). Red: Actin filaments have been labeled with Alexa Fluor-555 phalloidin.