

## EphA6 Monoclonal Antibody

<b>Catalog No :</b>	YM0226
<b>Reactivity :</b>	Human
<b>Applications :</b>	WB;ELISA
<b>Target :</b>	EphA6
<b>Fields :</b>	>>Axon guidance
<b>Gene Name :</b>	EPHA6
<b>Protein Name :</b>	Ephrin type-A receptor 6
<b>Human Gene Id :</b>	285220
<b>Human Swiss Prot No :</b>	Q9UF33
<b>Mouse Swiss Prot No :</b>	Q62413
<b>Immunogen :</b>	Purified recombinant fragment of EphA6 (aa695-795) expressed in E. Coli.
<b>Specificity :</b>	EphA6 Monoclonal Antibody detects endogenous levels of EphA6 protein.
<b>Formulation :</b>	Liquid in PBS containing 50% glycerol, 0.5% BSA and 0.02% sodium azide.
<b>Source :</b>	Monoclonal, Mouse
<b>Dilution :</b>	WB 1:500 - 1:2000. ELISA: 1:10000. Not yet tested in other applications.
<b>Purification :</b>	Affinity purification
<b>Storage Stability :</b>	-15°C to -25°C/1 year(Do not lower than -25°C)
<b>Molecularweight :</b>	116kD
<b>Cell Pathway :</b>	Axon guidance;

**P References :**

1. Curr Biol. 2004 Feb 3;14(3):R121-3.
2. Genome Res. 2006 Jan;16(1):55-65.

**Background :**

catalytic activity:ATP + a [protein]-L-tyrosine = ADP + a [protein]-L-tyrosine phosphate.,function:Receptor for members of the ephrin-A family.,similarity:Belongs to the protein kinase superfamily. Tyr protein kinase family. Ephrin receptor subfamily.,similarity:Contains 1 protein kinase domain.,similarity:Contains 1 SAM (sterile alpha motif) domain.,similarity:Contains 2 fibronectin type-III domains.,tissue specificity:Expressed in brain and testis.,

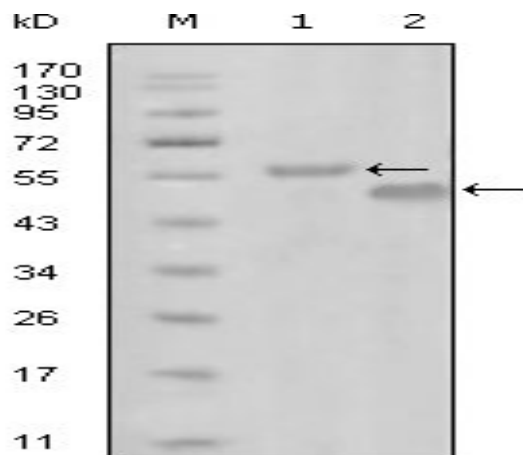
**Function :**

catalytic activity:ATP + a [protein]-L-tyrosine = ADP + a [protein]-L-tyrosine phosphate.,function:Receptor for members of the ephrin-A family.,similarity:Belongs to the protein kinase superfamily. Tyr protein kinase family. Ephrin receptor subfamily.,similarity:Contains 1 protein kinase domain.,similarity:Contains 1 SAM (sterile alpha motif) domain.,similarity:Contains 2 fibronectin type-III domains.,tissue specificity:Expressed in brain and testis.,

**Subcellular Location :** Membrane ; Single-pass type I membrane protein .

**Expression :** Expressed in brain and testis.

## Products Images



Western Blot analysis using EphA6 Monoclonal Antibody against truncated MBP-EphA6 recombinant protein (1) and truncated GST-EphA6(aa695-795) recombinant protein (2).