

LMP7A Monoclonal Antibody

Catalog No :	YM0419
Reactivity :	Human;Rat
Applications :	WB;IHC;IF;ELISA
Target :	LMP7A
Fields :	>>Proteasome
Gene Name :	PSMB8
Protein Name :	Proteasome subunit beta type-8
Human Gene Id :	5696
Human Swiss Prot No :	P28062
Mouse Swiss Prot No :	P28063
Rat Gene Id :	24968
Rat Swiss Prot No :	P28064
Immunogen :	Purified recombinant fragment of human LMP7A expressed in E. Coli.
Specificity :	LMP7A Monoclonal Antibody detects endogenous levels of LMP7A protein.
Formulation :	Liquid in PBS containing 50% glycerol, 0.5% BSA and 0.02% sodium azide.
Source :	Monoclonal, Mouse
Dilution :	WB 1:500 - 1:2000. IHC 1:200 - 1:1000. IF 1:200 - 1:1000. ELISA: 1:10000. Not yet tested in other applications.
Purification :	Affinity purification

Storage Stability : -15°C to -25°C/1 year(Do not lower than -25°C)

Molecularweight : 30kD

Cell Pathway : Proteasome;

P References : 1. Genes Chromosomes Cancer. 2009 May;48(5):410-8.
2. Respir Med. 2010 Jun;104(6):889-94. Epub 2010 Feb 11.

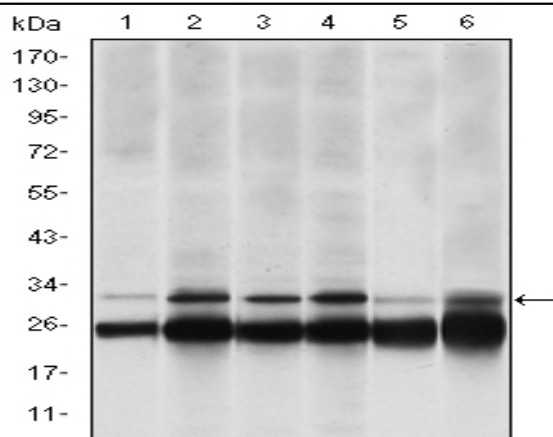
Background : The proteasome is a multicatalytic proteinase complex with a highly ordered ring-shaped 20S core structure. The core structure is composed of 4 rings of 28 non-identical subunits; 2 rings are composed of 7 alpha subunits and 2 rings are composed of 7 beta subunits. Proteasomes are distributed throughout eukaryotic cells at a high concentration and cleave peptides in an ATP/ubiquitin-dependent process in a non-lysosomal pathway. An essential function of a modified proteasome, the immunoproteasome, is the processing of class I MHC peptides. This gene encodes a member of the proteasome B-type family, also known as the T1B family, that is a 20S core beta subunit. This gene is located in the class II region of the MHC (major histocompatibility complex). Expression of this gene is induced by gamma interferon and this gene product replaces catalytic subunit 3 (proteasome beta 5 subunit) in the immu

Function : alternative products:Additional isoforms seem to exist,catalytic activity:Cleavage of peptide bonds with very broad specificity.,function:The proteasome is a multicatalytic proteinase complex which is characterized by its ability to cleave peptides with Arg, Phe, Tyr, Leu, and Glu adjacent to the leaving group at neutral or slightly basic pH. The proteasome has an ATP-dependent proteolytic activity. This subunit is involved in antigen processing to generate class I binding peptides.,similarity:Belongs to the peptidase T1B family.,subunit:The 26S proteasome consists of a 20S proteasome core and two 19S regulatory subunits. The 20S proteasome core is composed of 28 subunits that are arranged in four stacked rings, resulting in a barrel-shaped structure. The two end rings are each formed by seven alpha subunits, and the two central rings are each formed by seven beta subunits. The catalytic

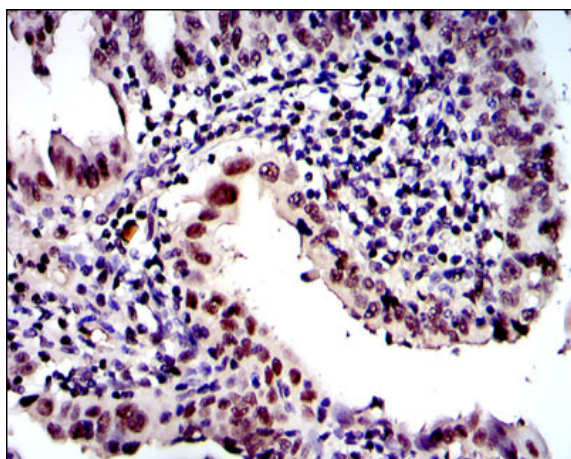
Subcellular Location : Cytoplasm . Nucleus .

Expression : Blood,Skin,

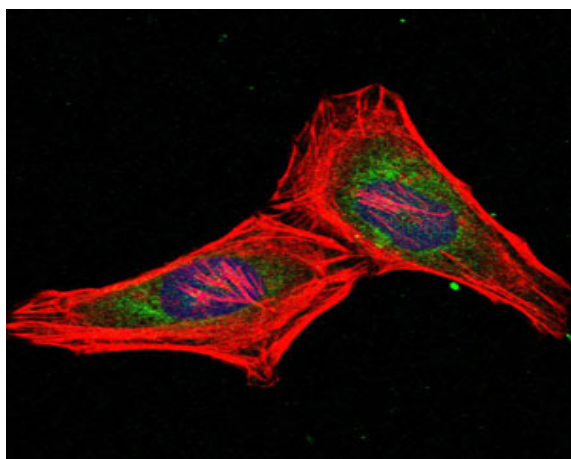
Products Images



Western Blot analysis using LMP7A Monoclonal Antibody against HeLa (1), MCF-7 (2), A431 (3), RAJI (4), MOTL4 (5) and PC-12 (6) cell lysate.



Immunohistochemistry analysis of paraffin-embedded intima cancer tissues with DAB staining using LMP7A Monoclonal Antibody.



Immunofluorescence analysis of HeLa cells using LMP7A Monoclonal Antibody (green). Blue: DRAQ5 fluorescent DNA dye. Red: Actin filaments have been labeled with Alexa Fluor-555 phalloidin.

