

CD80 Monoclonal Antibody

| | |
|------------------------------|---|
| Catalog No : | YM0136 |
| Reactivity : | Human |
| Applications : | IHC;IF;ELISA |
| Target : | CD80 |
| Fields : | >>Cell adhesion molecules;>>Toll-like receptor signaling pathway;>>Intestinal immune network for IgA production;>>Type I diabetes mellitus;>>Autoimmune thyroid disease;>>Systemic lupus erythematosus;>>Rheumatoid arthritis;>>Allograft rejection;>>Graft-versus-host disease;>>Viral myocarditis |
| Gene Name : | CD80 |
| Protein Name : | T-lymphocyte activation antigen CD80 |
| Human Gene Id : | 941 |
| Human Swiss Prot No : | P33681 |
| Mouse Swiss Prot No : | Q00609 |
| Immunogen : | Purified recombinant fragment of CD80 expressed in E. Coli. |
| Specificity : | CD80 Monoclonal Antibody detects endogenous levels of CD80 protein. |
| Formulation : | Liquid in PBS containing 50% glycerol, 0.5% BSA and 0.02% sodium azide. |
| Source : | Monoclonal, Mouse |
| Dilution : | IHC 1:200 - 1:1000. IF 1:200 - 1:1000. ELISA: 1:10000. Not yet tested in other applications. |
| Purification : | Affinity purification |
| Storage Stability : | -15°C to -25°C/1 year(Do not lower than -25°C) |

Cell Pathway : Cell adhesion molecules (CAMs);Toll_Like;Intestinal immune network for IgA production;Type I diabetes mellitus;Autoimmune thyroid disease;Systemic lupus erythematosus;Allograft rejection;Graft-versus-

P References : 1. Transplant Proc. 2008 Oct;40(8):2729-33.
2. Nat Med. 2007 Dec;13(12):1440-9.

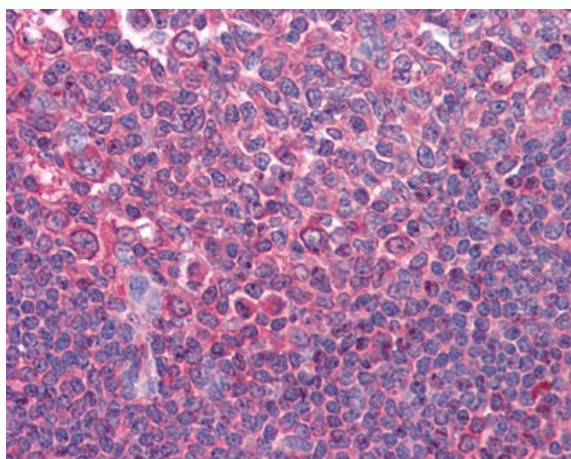
Background : The protein encoded by this gene is a membrane receptor that is activated by the binding of CD28 or CTLA-4. The activated protein induces T-cell proliferation and cytokine production. This protein can act as a receptor for adenovirus subgroup B and may play a role in lupus neuropathy. [provided by RefSeq, Aug 2011],

Function : function:Involved in the costimulatory signal essential for T-lymphocyte activation. T-cell proliferation and cytokine production is induced by the binding of CD28 or CTLA-4 to this receptor.,similarity:Contains 1 Ig-like C2-type (immunoglobulin-like) domain.,similarity:Contains 1 Ig-like V-type (immunoglobulin-like) domain.,subunit:Interacts with adenovirus subgroup B fiber proteins and acts as a receptor for these viruses.,tissue specificity:Expressed on activated B-cells, macrophages and dendritic cells.,

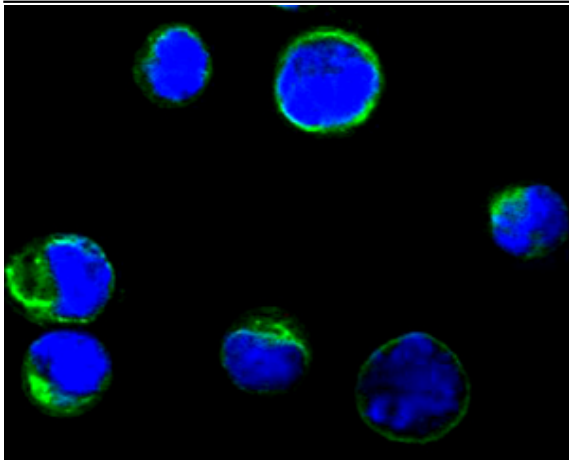
Subcellular Location : Membrane; Single-pass type I membrane protein.

Expression : Expressed on activated B-cells, macrophages and dendritic cells.

Products Images



Immunohistochemistry analysis of paraffin-embedded human Tonsil tissues with AEC staining using CD80 Monoclonal Antibody.



Confocal immunofluorescence analysis of BCBL-1 cells using CD80 Monoclonal Antibody (green), showing membrane localization. Blue: DRAQ5 fluorescent DNA dye.