

## GDF-8 Monoclonal Antibody

|                              |  |
|------------------------------|--|
| <b>Catalog No :</b>          | YM0303   |
| <b>Reactivity :</b>          | Human  |
| <b>Applications :</b>        | WB;ELISA   |
| <b>Target :</b>              | GDF-8  |
| <b>Fields :</b>              | >>Cytokine-cytokine receptor interaction                                 |
| <b>Gene Name :</b>           | MSTN   |
| <b>Protein Name :</b>        | Growth/differentiation factor 8  |
| <b>Human Gene Id :</b>       | 2660   |
| <b>Human Swiss Prot No :</b> | O14793   |
| <b>Mouse Swiss Prot No :</b> | O08689   |
| <b>Immunogen :</b>           | Purified recombinant fragment of GDF-8 expressed in E. Coli.             |
| <b>Specificity :</b>         | GDF-8 Monoclonal Antibody detects endogenous levels of GDF-8 protein.    |
| <b>Formulation :</b>         | Liquid in PBS containing 50% glycerol, 0.5% BSA and 0.02% sodium azide.  |
| <b>Source :</b>              | Monoclonal, Mouse  |
| <b>Dilution :</b>            | WB 1:500 - 1:2000. ELISA: 1:10000. Not yet tested in other applications. |
| <b>Purification :</b>        | Affinity purification  |
| <b>Storage Stability :</b>   | -15°C to -25°C/1 year(Do not lower than -25°C)                           |
| <b>Molecularweight :</b>     | 43kD   |
| <b>P References :</b>        | 1. Clin Chim Acta. 2008 May;391(1-2):115-7.                              |

2. Folia Morphol (Warsz). 2008 Feb;67(1):6-12.

**Background :**

myostatin(MSTN) Homo sapiens This gene encodes a secreted ligand of the TGF-beta (transforming growth factor-beta) superfamily of proteins. Ligands of this family bind various TGF-beta receptors leading to recruitment and activation of SMAD family transcription factors that regulate gene expression. The encoded preproprotein is proteolytically processed to generate each subunit of the disulfide-linked homodimer. This protein negatively regulates skeletal muscle cell proliferation and differentiation. Mutations in this gene are associated with increased skeletal muscle mass in humans and other mammals. [provided by RefSeq, Jul 2016],

**Function :**

function:Acts specifically as a negative regulator of skeletal muscle growth.,online information:Myostatin entry,similarity:Belongs to the TGF-beta family.,subunit:Homodimer; disulfide-linked (By similarity). Interacts with WFIKKN2, leading to inhibit its activity.,

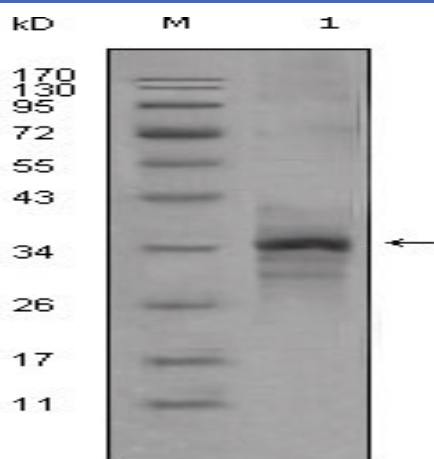
**Subcellular Location :**

Secreted .

**Expression :**

Colon,Muscle,Pericardium,Skeletal muscle,

## Products Images



Western Blot analysis using GDF-8 Monoclonal Antibody against truncated GDF-8-His recombinant protein (1).