

Arg Monoclonal Antibody

Catalog No :	YM0046
Reactivity :	Human;Mouse
Applications :	WB;IF;ELISA
Target :	Arg
Fields :	>>ErbB signaling pathway;>>Ras signaling pathway;>>Chemical carcinogenesis - reactive oxygen species;>>Viral myocarditis
Gene Name :	ABL2
Protein Name :	Tyrosine-protein kinase ABL2
Human Gene Id :	27
Human Swiss Prot No :	P42684
Mouse Swiss Prot No :	Q4JIM5
Immunogen :	Purified recombinant fragment of Arg expressed in E. Coli.
Specificity :	Arg Monoclonal Antibody detects endogenous levels of Arg protein.
Formulation :	Liquid in PBS containing 50% glycerol, 0.5% BSA and 0.02% sodium azide.
Source :	Monoclonal, Mouse
Dilution :	WB 1:500 - 1:2000. IF 1:200 - 1:1000. ELISA: 1:10000. Not yet tested in other applications.
Purification :	Affinity purification
Storage Stability :	-15°C to -25°C/1 year(Do not lower than -25°C)
Molecularweight :	128kD

Cell Pathway : ErbB_HER;Viral myocarditis;

P References : 1. Yoshimi I, Takashi I, Tsuneyuki O, et al. Blood. 2000; 95(6): 2126-2131.
2. Scheijen, B. and Griffin, J.D. Oncogene. 2002; 21:3314-33.

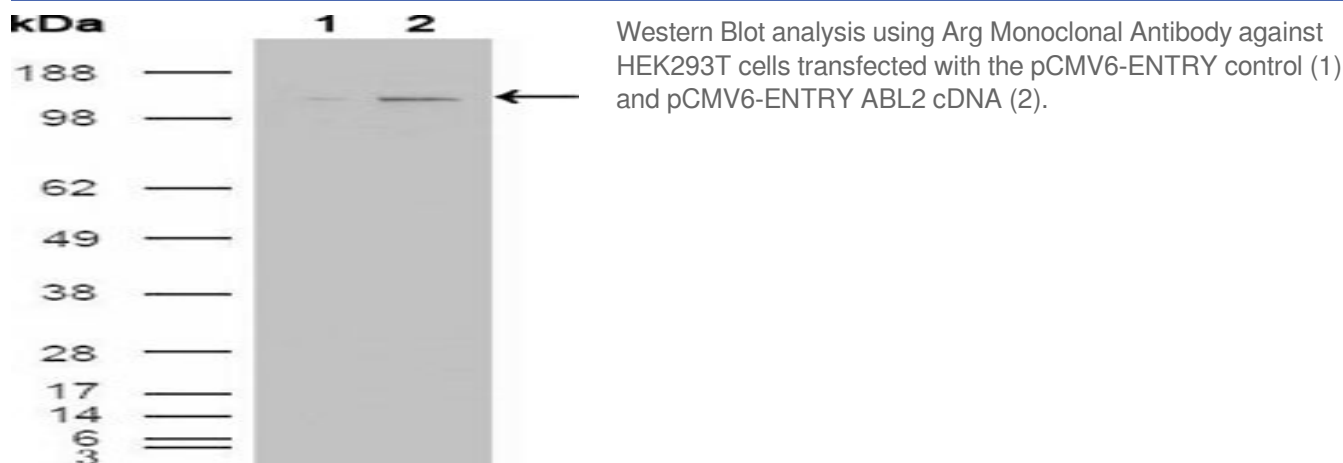
Background : This gene encodes a member of the Abelson family of nonreceptor tyrosine protein kinases. The protein is highly similar to the c-abl oncogene 1 protein, including the tyrosine kinase, SH2 and SH3 domains, and it plays a role in cytoskeletal rearrangements through its C-terminal F-actin- and microtubule-binding sequences. This gene is expressed in both normal and tumor cells, and is involved in translocation with the ets variant 6 gene in leukemia. Multiple alternatively spliced transcript variants encoding different protein isoforms have been found for this gene. [provided by RefSeq, Nov 2009],

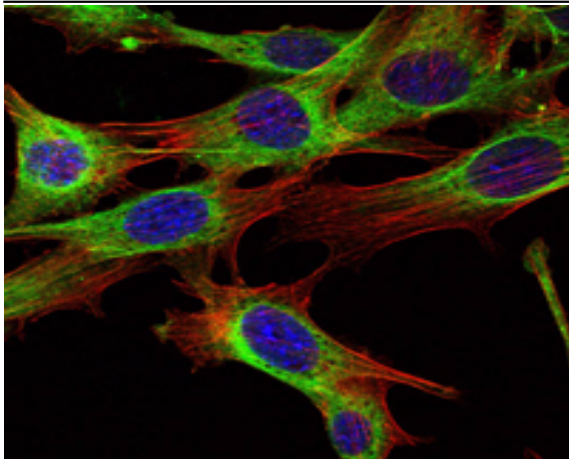
Function : catalytic activity:ATP + a [protein]-L-tyrosine = ADP + a [protein]-L-tyrosine phosphate.,caution:The sequence shown here is derived from an Ensembl automatic analysis pipeline and should be considered as preliminary data.,cofactor:Magnesium or manganese.,enzyme regulation:Stabilized in the inactive form by an association between the SH3 domain and the SH2-TK linker region, interactions of the amino-terminal cap, and contributions from an amino-terminal myristoyl group and phospholipids. Activated by autophosphorylation as well as by SRC-family kinase-mediated phosphorylation. Activated by RIN1 binding to the SH2 and SH3 domains. Inhibited by imatinib mesylate (Gleevec) which is used for the treatment of chronic myeloid leukemia (CML).,function:Regulates cytoskeleton remodeling during cell differentiation, cell division and cell adhesion. Localizes to dynamic actin structures, and phosph

Subcellular Location : Cytoplasm, cytoskeleton.

Expression : Widely expressed.

Products Images





Immunofluorescence analysis of NIH/3T3 cells using Arg Monoclonal Antibody (green). Blue: DRAQ5 fluorescent DNA dye. Red: Actin filaments have been labeled with Alexa Fluor-555 phalloidin.