

## Fer Monoclonal Antibody

<b>Catalog No :</b>	YM0262
<b>Reactivity :</b>	Human;Mouse
<b>Applications :</b>	WB;IHC;IF;ELISA
<b>Target :</b>	FER
<b>Fields :</b>	>>Adherens junction
<b>Gene Name :</b>	FER
<b>Protein Name :</b>	Tyrosine-protein kinase Fer
<b>Human Gene Id :</b>	2241
<b>Human Swiss Prot No :</b>	P16591
<b>Mouse Gene Id :</b>	14158
<b>Mouse Swiss Prot No :</b>	P70451
<b>Immunogen :</b>	Purified recombinant fragment of human Fer expressed in E. Coli.
<b>Specificity :</b>	Fer Monoclonal Antibody detects endogenous levels of Fer protein.
<b>Formulation :</b>	Liquid in PBS containing 50% glycerol, 0.5% BSA and 0.02% sodium azide.
<b>Source :</b>	Monoclonal, Mouse
<b>Dilution :</b>	WB 1:500 - 1:2000. IHC 1:200 - 1:1000. IF 1:200 - 1:1000. ELISA: 1:10000. Not yet tested in other applications.
<b>Purification :</b>	Affinity purification
<b>Storage Stability :</b>	-15°C to -25°C/1 year(Do not lower than -25°C)

**Molecularweight :** 95kD

---

**Cell Pathway :** Adherens\_Junction;

---

**P References :**

1. Li L. Cheng X. Ling HQ. Plant Mol Biol. 2004, Jan, 54(1):125-36.
2. Girault JA. Greengard P. Arch Neurol. 2004, May, 61(5):641-4.
3. Fan L. Di Ciano-Oliveira C. Weed SA. et al. Biochem J. 2

---

**Background :** The protein encoded by this gene is a member of the FPS/FES family of non-transmembrane receptor tyrosine kinases. It regulates cell-cell adhesion and mediates signaling from the cell surface to the cytoskeleton via growth factor receptors. Alternative splicing results in multiple transcript variants. A related pseudogene has been identified on chromosome X. [provided by RefSeq, Apr 2015],

---

**Function :** catalytic activity:ATP + a [protein]-L-tyrosine = ADP + a [protein]-L-tyrosine phosphate.,function:Tyrosine kinase of the non-receptor type. Probably performs an important function, perhaps in regulatory processes such as cell cycle control.,similarity:Belongs to the protein kinase superfamily. Tyr protein kinase family. Fes/fps subfamily.,similarity:Contains 1 FCH domain.,similarity:Contains 1 protein kinase domain.,similarity:Contains 1 SH2 domain.,subcellular location:Associated with the chromatin.,tissue specificity:Expressed in a variety of lymphoid cell lines.,

---

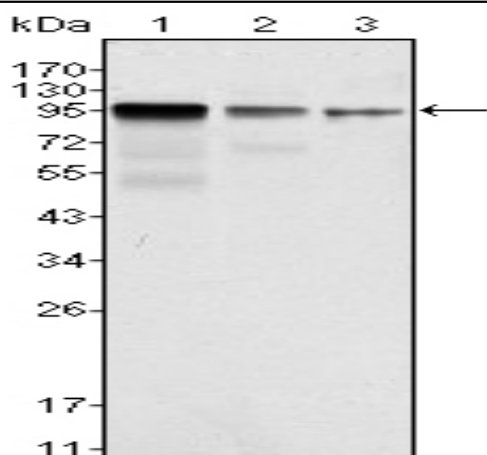
**Subcellular Location :** Cytoplasm. Cytoplasm, cytoskeleton. Cell membrane; Peripheral membrane protein; Cytoplasmic side. Cell projection. Cell junction. Membrane; Peripheral membrane protein; Cytoplasmic side. Nucleus. Cytoplasm, cell cortex. Associated with the chromatin. Detected on microtubules in polarized and motile vascular endothelial cells. Colocalizes with F-actin at the cell cortex. Colocalizes with PECAM1 and CTNND1 at nascent cell-cell contacts.

---

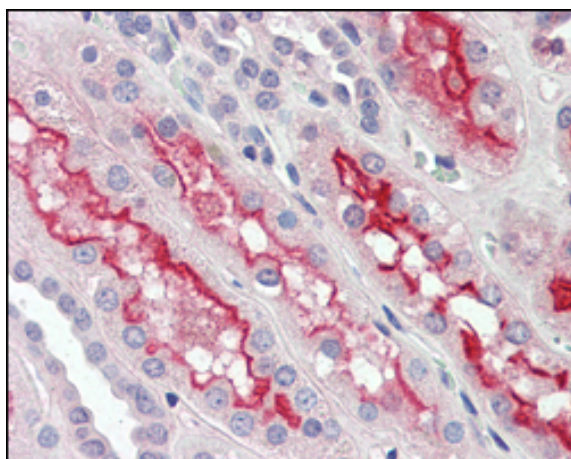
**Expression :** Isoform 1 is detected in normal colon and in fibroblasts (at protein level). Isoform 3 is detected in normal testis, in colon carcinoma-derived metastases in lung, liver and ovary, and in colon carcinoma and hepato carcinoma cell lines (at protein level). Isoform 3 is not detected in normal colon or in normal fibroblasts (at protein level). Widely expressed.

---

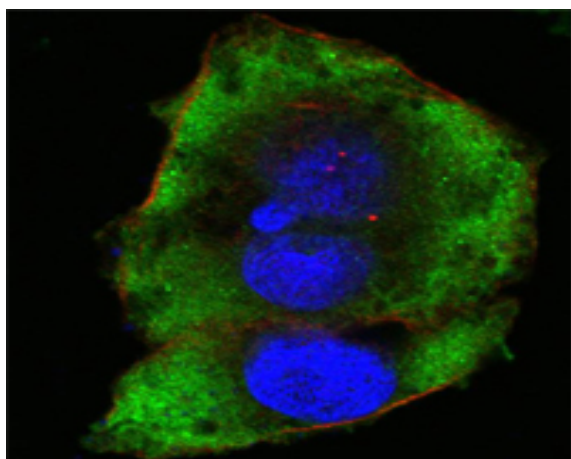
## Products Images



Western Blot analysis using Fer Monoclonal Antibody against NIH/3T3 (1), A549 (2) and SK-MEL-5 (3) cell lysate.



Immunohistochemistry analysis of paraffin-embedded human kidney tissues with AEC staining using Fer Monoclonal Antibody.



Confocal immunofluorescence analysis of HeLa cells using Fer Monoclonal Antibody (green). Red: Actin filaments have been labeled with Alexa Fluor-555 phalloidin. Blue: DRAQ5 fluorescent DNA dye.