

## ERM Monoclonal Antibody

<b>Catalog No :</b>	YM0247
<b>Reactivity :</b>	Human
<b>Applications :</b>	WB;ELISA
<b>Target :</b>	ERM
<b>Fields :</b>	>>Transcriptional misregulation in cancer;>>Prostate cancer
<b>Gene Name :</b>	ETV5
<b>Protein Name :</b>	ETS translocation variant 5
<b>Human Gene Id :</b>	2119
<b>Human Swiss Prot No :</b>	P41161
<b>Mouse Swiss Prot No :</b>	Q9CXC9
<b>Immunogen :</b>	Purified recombinant fragment of human ERM expressed in E. Coli.
<b>Specificity :</b>	ERM Monoclonal Antibody detects endogenous levels of ERM protein.
<b>Formulation :</b>	Liquid in PBS containing 50% glycerol, 0.5% BSA and 0.02% sodium azide.
<b>Source :</b>	Monoclonal, Mouse
<b>Dilution :</b>	WB 1:500 - 1:2000. ELISA: 1:10000. Not yet tested in other applications.
<b>Purification :</b>	Affinity purification
<b>Storage Stability :</b>	-15°C to -25°C/1 year(Do not lower than -25°C)
<b>Molecularweight :</b>	58kD
<b>P References :</b>	1. Immunity. 2002 Oct;17(4):401-12.

2. Clin Cancer Res. 2004 Nov 1;10(21):7297-303.

3. J Hum Genet. 2009 Dec;54(12):727-31.

---

**Background :**

function: Binds to DNA sequences containing the consensus nucleotide core sequence GGAA., mass spectrometry: PubMed:11840567, similarity: Belongs to the ETS family., similarity: Contains 1 ETS DNA-binding domain., tissue specificity: Ubiquitous.,

---

**Function :**

function: Binds to DNA sequences containing the consensus nucleotide core sequence GGAA., mass spectrometry: PubMed:11840567, similarity: Belongs to the ETS family., similarity: Contains 1 ETS DNA-binding domain., tissue specificity: Ubiquitous.,

---

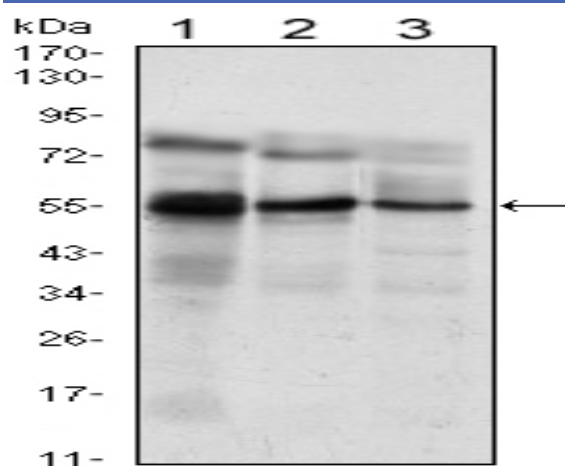
**Subcellular Location :**Nucleus.

---

**Expression :**Ubiquitous.

---

## Products Images



Western Blot analysis using ERM Monoclonal Antibody against Jurkat (1), NIH/3T3 (2) and MCF-7 (3) cell lysate.