

EP-CAM Monoclonal Antibody

Catalog No :	YM0219
Reactivity :	Human
Applications :	WB;IHC;IF;ELISA
Target :	Ep-CAM
Gene Name :	EPCAM
Protein Name :	Epithelial cell adhesion molecule
Human Gene Id :	4072
Human Swiss Prot No :	P16422
Mouse Swiss Prot No :	Q99JW5
Immunogen :	Purified recombinant fragment of human EP-CAM expressed in E. Coli.
Specificity :	EP-CAM Monoclonal Antibody detects endogenous levels of EP-CAM protein.
Formulation :	Liquid in PBS containing 50% glycerol, 0.5% BSA and 0.02% sodium azide.
Source :	Monoclonal, Mouse
Dilution :	WB 1:500 - 1:2000. IHC 1:200 - 1:1000. ELISA: 1:10000.. IF 1:50-200
Purification :	Affinity purification
Storage Stability :	-15°C to -25°C/1 year(Do not lower than -25°C)
Molecularweight :	35kD
P References :	1. Int J Oncol. 2007 Jan;30(1):171-9. 2. Int J Cancer. 2008 Jul 15;123(2):484-9.

Background :

This gene encodes a carcinoma-associated antigen and is a member of a family that includes at least two type I membrane proteins. This antigen is expressed on most normal epithelial cells and gastrointestinal carcinomas and functions as a homotypic calcium-independent cell adhesion molecule. The antigen is being used as a target for immunotherapy treatment of human carcinomas. Mutations in this gene result in congenital tufting enteropathy. [provided by RefSeq, Dec 2008],

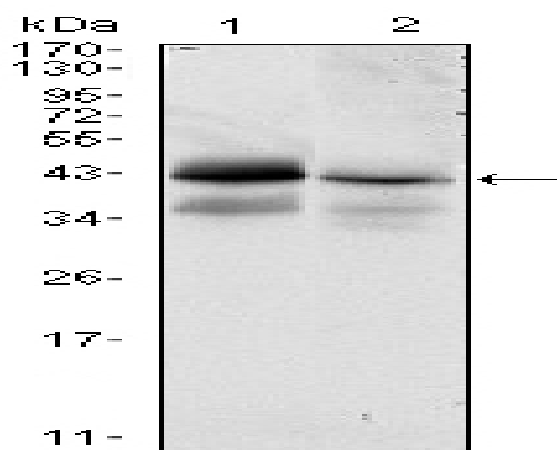
Subcellular Location :

Lateral cell membrane ; Single-pass type I membrane protein . Cell junction, tight junction . Colocalizes with CLDN7 at the lateral cell membrane and tight junction. .

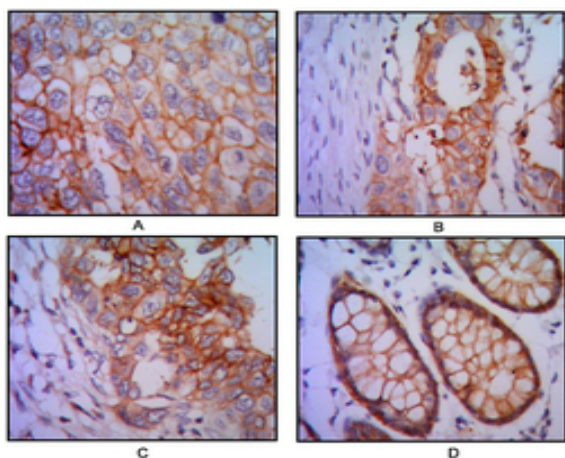
Expression :

Highly and selectively expressed by undifferentiated rather than differentiated embryonic stem cells (ESC). Levels rapidly diminish as soon as ESC's differentiate (at protein levels). Expressed in almost all epithelial cell membranes but not on mesodermal or neural cell membranes. Found on the surface of adenocarcinoma.

Products Images



Western Blot analysis using EP-CAM Monoclonal Antibody against HTC116 (1) and T47D (2) cell lysate.



Immunohistochemistry analysis of paraffin-embedded human lung cancer (A), colon cancer (B), breast cancer (C) and rectal cancer(D) with DAB staining using EP-CAM Monoclonal Antibody.