

CD69 Monoclonal Antibody

Catalog No :	YM0131
Reactivity :	Human
Applications :	WB;IHC;IF;FCM;ELISA
Target :	CD69
Gene Name :	CD69
Protein Name :	Early activation antigen CD69
Human Gene Id :	969
Human Swiss Prot No :	Q07108
Mouse Swiss Prot No :	P37217
Immunogen :	Purified recombinant fragment of human CD69 expressed in E. Coli.
Specificity :	CD69 Monoclonal Antibody detects endogenous levels of CD69 protein.
Formulation :	Liquid in PBS containing 50% glycerol, 0.5% BSA and 0.02% sodium azide.
Source :	Monoclonal, Mouse
Dilution :	WB 1:500 - 1:2000. IHC 1:200 - 1:1000. Flow cytometry: 1:200 - 1:400. ELISA: 1:10000.. IF 1:50-200
Purification :	Affinity purification
Storage Stability :	-15°C to -25°C/1 year(Do not lower than -25°C)
Molecularweight :	23kD
P References :	<ol style="list-style-type: none">1. EMBO J. 1997 Feb 17;16(4):673-84.2. Cell Immunol. 2002 Nov;220(1):20-9.3. Arch Biochem Biophys. 2005 Jun 1;438(1):11-20.

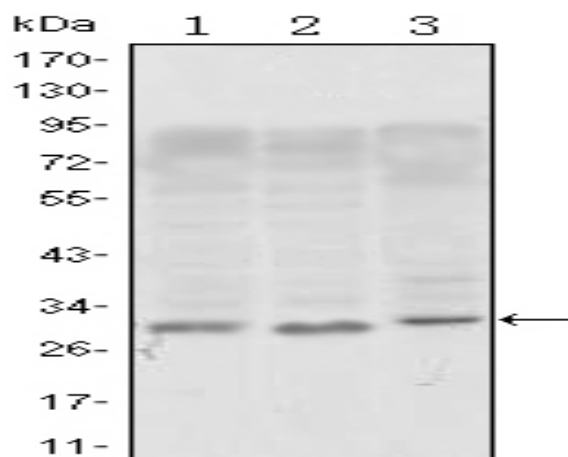
Background : This gene encodes a member of the calcium dependent lectin superfamily of type II transmembrane receptors. Expression of the encoded protein is induced upon activation of T lymphocytes, and may play a role in proliferation. Furthermore, the protein may act to transmit signals in natural killer cells and platelets. [provided by RefSeq, Aug 2011],

Function : developmental stage:Earliest inducible cell surface glycoprotein acquired during lymphoid activation.,function:Involved in lymphocyte proliferation and functions as a signal transmitting receptor in lymphocytes, natural killer (NK) cells, and platelets.,induction:By antigens, mitogens or activators of PKC on the surface of T and B-lymphocytes. By interaction of IL-2 with the p75 IL-2R on the surface of NK cells.,online information:CD69,PTM:Constitutive Ser/Thr phosphorylation in both mature thymocytes and activated T-lymphocytes.,similarity:Contains 1 C-type lectin domain.,subunit:Homodimer; disulfide-linked.,tissue specificity:Expressed on the surface of activated T-cells, B-cells, natural killer cells, neutrophils, eosinophils, epidermal Langerhans cells and platelets.,

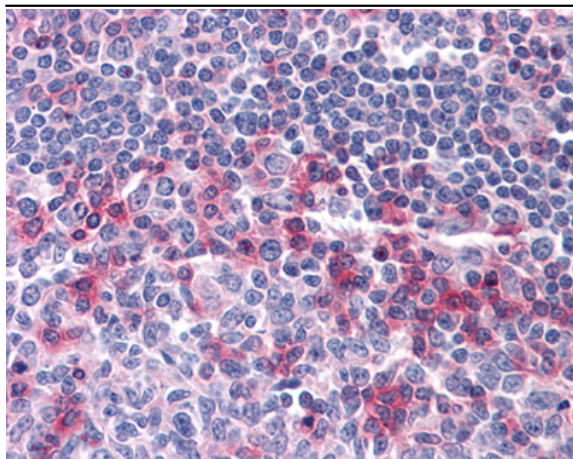
Subcellular Location : Membrane; Single-pass type II membrane protein.

Expression : Expressed on the surface of activated T-cells, B-cells, natural killer cells, neutrophils, eosinophils, epidermal Langerhans cells and platelets.

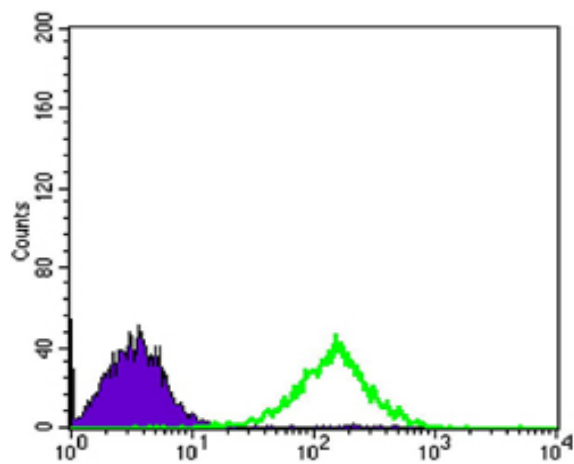
Products Images



Western Blot analysis using CD69 Monoclonal Antibody against, Jurkat (1), L1210 (2) and TPH-1 (3) cell lysate.



Immunohistochemistry analysis of paraffin-embedded human Tonsil tissues with AEC staining using CD69 Monoclonal Antibody.



Flow cytometric analysis of Jurkat cells using CD69 Monoclonal Antibody (green) and negative control (purple).