

Cytokeratin 18 (ABT054) Mouse mAb

Catalog No :	YM6862
Reactivity :	Human; Mouse (predicted: Rat)
Applications :	IHC;WB;ELISA
Target :	Cytokeratin 18
Fields :	>>Estrogen signaling pathway;>>Staphylococcus aureus infection
Gene Name :	KRT18 CYK18 PIG46
Protein Name :	Cytokeratin-18
Human Gene Id :	3875
Human Swiss Prot No :	P05783
Immunogen :	Synthesized peptide derived from human CK18 AA range: 200-300
Specificity :	The antibody can specifically recognize human CK18 protein, and shows no cross reaction with CK1, 5, 6, 7, 8, 10, 13, 14, 15, 19, 20. In western blotting of Hela and MCF7 cell lysates, the antibody c
Formulation :	Liquid in PBS containing 50% glycerol, 0.5% BSA and 0.02% sodium azide.
Source :	Mouse, Monoclonal/IgG2b, Kappa
Dilution :	IHC 1:200-400, WB 1:200-1000, ELISA 1:5000-20000
Purification :	The antibody was affinity-purified from mouse ascites by affinity-chromatography using specific immunogen.
Storage Stability :	-15°C to -25°C/1 year(Do not lower than -25°C)
Molecularweight :	48kD
Background :	KRT18 encodes the type I intermediate filament chain keratin 18. Keratin 18,

together with its filament partner keratin 8, are perhaps the most commonly found members of the intermediate filament gene family. They are expressed in single layer epithelial tissues of the body. Mutations in this gene have been linked to cryptogenic cirrhosis. Two transcript variants encoding the same protein have been found for this gene. [provided by RefSeq, Jul 2008],

Function :

disease:Defects in KRT18 are a cause of cryptogenic cirrhosis [MIM:215600].,function:Involved in the uptake of thrombin-antithrombin complexes by hepatic cells (By similarity). When phosphorylated, plays a role in filament reorganization. Involved in the delivery of mutated CFTR to the plasma membrane. Together with KRT8, is involved in interleukin-6 (IL-6)-mediated barrier protection.,induction:By IL-6.,miscellaneous:There are two types of cytoskeletal and microfibrillar keratin: I (acidic; 40-55 kDa) and II (neutral to basic; 56-70 kDa).,PTM:O-glycosylated at multiple sites; glycans consist of single N-acetylglucosamine residues.,PTM:Phosphorylation at Ser-34 increases during mitosis. Hyperphosphorylated at Ser-53 in diseased cirrhosis liver. Phosphorylation increases by IL-6.,PTM:Proteolytically cleaved by caspases during epithelial cell apoptosis. Cleavage occurs at Asp-238 by either

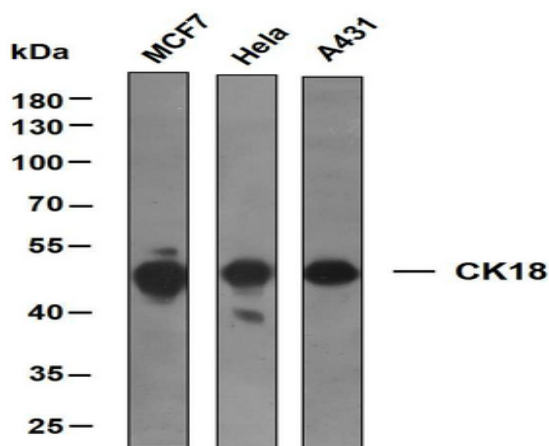
Subcellular Location :

Cytoplasmic, Membranous

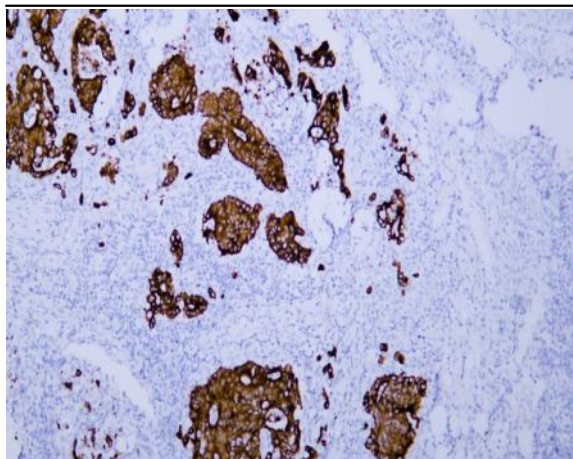
Expression :

Expressed in colon, placenta, liver and very weakly in exocervix. Increased expression observed in lymph nodes of breast carcinoma.

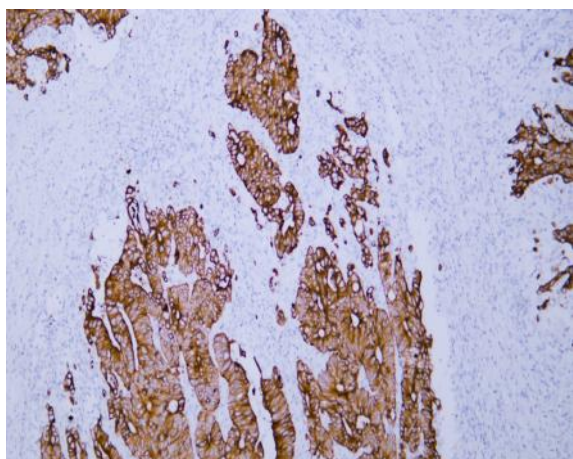
Products Images



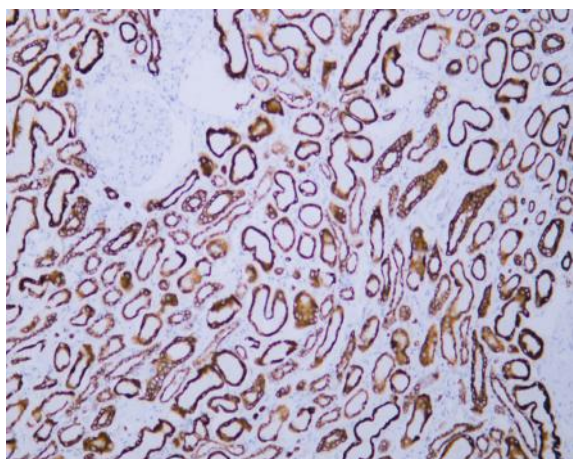
Various whole cell lysates were separated by 10% SDS-PAGE, and the membrane was blotted with anti-CK18 antibody at 1ug/ml. The HRP-conjugated anti-Mouse IgG antibody was used to detect the antibody. Predicted band size: 48 kDa



Human colon carcinoma tissue was stained with Anti-Cytokeratin 18 (ABT054) Antibody



Human colon carcinoma tissue was stained with Anti-Cytokeratin 18 (ABT054) Antibody



Human kidney tissue was stained with Anti-Cytokeratin 18 (ABT054) Antibody