

GST-Pi mouse mAb(ABT-GSTP1)

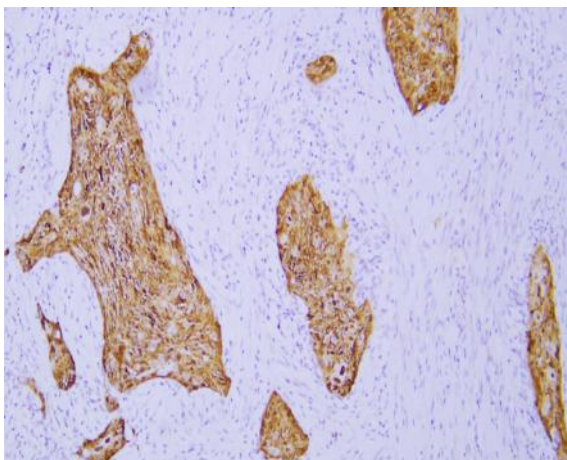
Catalog No :	YM6765
Reactivity :	Human
Applications :	IHC-p,WB
Gene Name :	GSTP1 FAEES3 GST3
Protein Name :	GST-Pi
Human Gene Id :	2950
Human Swiss Prot No :	P09211
Immunogen :	Synthesized peptide derived from human GST-Pi
Specificity :	This antibody detects endogenous levels of human GST-Pi, TRIS-EDTA of pH9.0 was used for Heat-induced epitope retrieval (HIER)
Formulation :	Liquid in PBS containing 50% glycerol, 0.5% BSA and 0.02% sodium azide.
Source :	Mouse
Dilution :	IHC-p 1:50-500 WB 1:1000-2000
Purification :	The antibody was affinity-purified from mouse ascites by affinity-chromatography using specific immunogen.
Concentration :	1 mg/ml
Storage Stability :	-20°C/1 year
Background :	glutathione S-transferase pi 1(GSTP1) Homo sapiens Glutathione S-transferases (GSTs) are a family of enzymes that play an important role in detoxification by catalyzing the conjugation of many hydrophobic and electrophilic compounds with reduced glutathione. Based on their biochemical, immunologic, and structural properties, the soluble GSTs are categorized into 4 main classes: alpha, mu, pi, and theta. This GST family member is a polymorphic gene encoding active, functionally different GSTP1 variant proteins that are thought to

function in xenobiotic metabolism and play a role in susceptibility to cancer, and other diseases. [provided by RefSeq, Jul 2008],

Function :

catalytic activity:RX + glutathione = HX + R-S-glutathione.,function:Conjugation of reduced glutathione to a wide number of exogenous and endogenous hydrophobic electrophiles.,online information:The Singapore human mutation and polymorphism database,similarity:Belongs to the GST superfamily. Pi family.,similarity:Contains 1 GST C-terminal domain.,similarity:Contains 1 GST N-terminal domain.,subunit:Homodimer.,

Products Images



Immunohistochemical analysis of paraffin-embedded human Esophageal_squamous_cell_carcinoma. 1, Antibody was diluted at 1:200(4 ° ,overnight). 2, TRIS-EDTA of pH9.0 was used for antigen retrieval. 3,Secondary antibody was diluted at 1:200(room temperature, 30min).