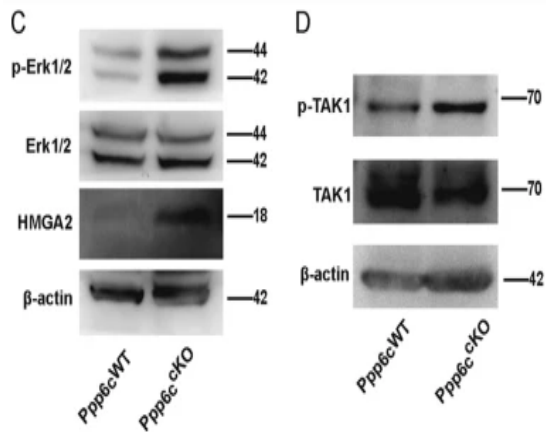


Tak1 (phospho Thr187) Polyclonal Antibody

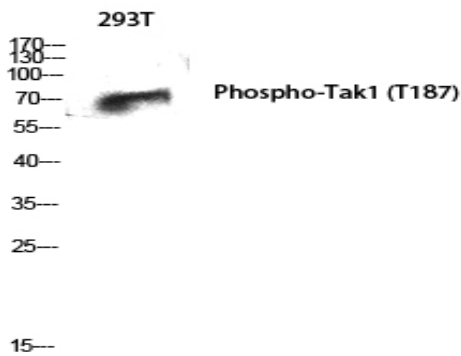
| | |
|------------------------------|--|
| Catalog No : | YP0424 |
| Reactivity : | Human,Mouse,Rat |
| Applications : | WB,IHC-p,IF(paraffin section),ELISA |
| Gene Name : | MAP3K7 |
| Protein Name : | Mitogen-activated protein kinase kinase kinase 7 |
| Human Gene Id : | 6885 |
| Human Swiss Prot No : | O43318 |
| Mouse Gene Id : | 26409 |
| Mouse Swiss Prot No : | Q62073 |
| Rat Gene Id : | 1.00911e+008 |
| Rat Swiss Prot No : | P0C8E4 |
| Immunogen : | The antiserum was produced against synthesized peptide derived from human MAP3K7 around the phosphorylation site of Thr187. AA range:161-210 |
| Specificity : | Phospho-Tak1 (T187) Polyclonal Antibody detects endogenous levels of Tak1 protein only when phosphorylated at T187. |
| Formulation : | Liquid in PBS containing 50% glycerol, 0.5% BSA and 0.02% sodium azide. |
| Source : | Rabbit |
| Dilution : | Western Blot: 1/500 - 1/2000. Immunohistochemistry: 1/100 - 1/300. ELISA: 1/10000. Not yet tested in other applications. |
| Purification : | The antibody was affinity-purified from rabbit antiserum by affinity-chromatography using epitope-specific immunogen. |

| | |
|-----------------------------------|---|
| Concentration : | 1 mg/ml |
| Storage Stability : | -20°C/1 year |
| Molecularweight : | 67196 |
| Observed Band : | 60 |
| Cell Pathway : | MAPK_ERK_Growth,MAPK_G_Protein,WNT,WNT-T CELLAdherens_Junction,Toll_Like,NOD-like receptor,RIG-I-like receptor,T_Cell_Receptor, |
| Background : | mitogen-activated protein kinase kinase kinase 7(MAP3K7) Homo sapiens The protein encoded by this gene is a member of the serine/threonine protein kinase family. This kinase mediates the signaling transduction induced by TGF beta and morphogenetic protein (BMP), and controls a variety of cell functions including transcription regulation and apoptosis. In response to IL-1, this protein forms a kinase complex including TRAF6, MAP3K7P1/TAB1 and MAP3K7P2/TAB2; this complex is required for the activation of nuclear factor kappa B. This kinase can also activate MAPK8/JNK, MAP2K4/MKK4, and thus plays a role in the cell response to environmental stresses. Four alternatively spliced transcript variants encoding distinct isoforms have been reported. [provided by RefSeq, Jul 2008], |
| Function : | catalytic activity:ATP + a protein = ADP + a phosphoprotein.,cofactor:Magnesium.,function:Component of a protein kinase signal transduction cascade. Mediator of TGF-beta signal transduction. Stimulates NF-kappa-B activation and the p38 MAPK pathway.,PTM:Association with MAP3K7IP1 promotes autophosphorylation and subsequent activation. Dephosphorylation at Thr-187 by PP2A and PPP6C leads to inactivation.,similarity:Belongs to the protein kinase superfamily.,similarity:Belongs to the protein kinase superfamily. STE Ser/Thr protein kinase family. MAP kinase kinase kinase subfamily.,similarity:Contains 1 protein kinase domain.,subunit:Binds both upstream activators and downstream substrates in multimolecular complexes. Interacts with MAP3K7IP1 and MAP3K7IP2. Interacts with PPM1L. Interaction with PP2A and PPP6C leads to its' repressed activity., |
| Subcellular Location : | nucleus,Ada2/Gcn5/Ada3 transcription activator complex,cytoplasm,cytosol,plasma membrane,IkappaB kinase complex,endosome membrane, |
| Expression : | Epithelium,Lung,Platelet,Uterus, |

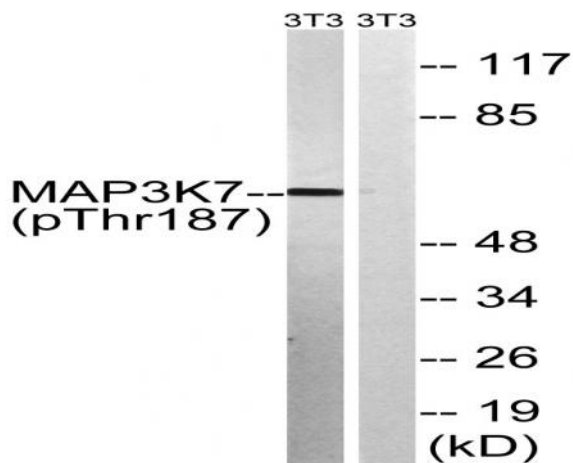
Products Images



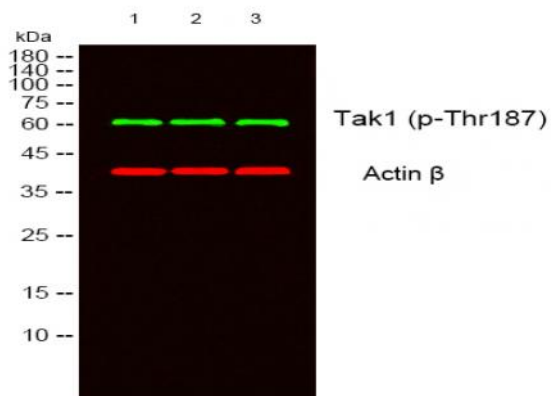
Lei, WL., Han, F., Hu, MW. et al. Protein phosphatase 6 is a key factor regulating spermatogenesis. *Cell Death Differ* 27, 1952–1964 (2020).



Western Blot analysis of 293T cells using Phospho-Tak1 (T187) Polyclonal Antibody diluted at 1:1000



Western blot analysis of lysates from NIH/3T3 cells treated with heat shock, using MAP3K7 (Phospho-Thr187) Antibody. The lane on the right is blocked with the phospho peptide.



Western blot analysis of lysates from 1) 3T3, 2) 293T, 3) HeLa cells, (Green) primary antibody was diluted at 1:1000, 4° over night, secondary antibody(cat:RS23920)was diluted at 1:10000, 37° 1 hour. (Red) Actin β Monoclonal Antibody(5B7) (cat:YM3028) antibody was diluted at 1:5000 as loading control, 4° over night,secondary antibody(cat:RS23710)was diluted at 1:10000, 37° 1 hour.