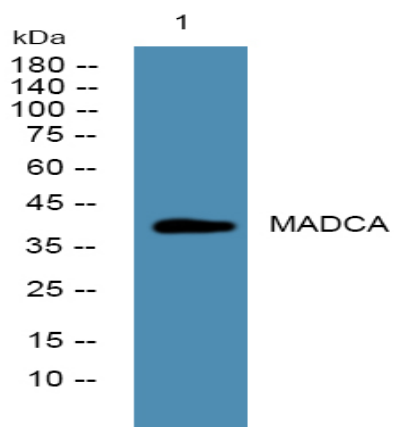


## MADCA Polyclonal Antibody

<b>Catalog No :</b>	YN0883
<b>Reactivity :</b>	Human;Rat;Mouse
<b>Applications :</b>	WB;ELISA
<b>Target :</b>	MADCA
<b>Fields :</b>	>>Cell adhesion molecules;>>Intestinal immune network for IgA production
<b>Gene Name :</b>	MADCAM1
<b>Protein Name :</b>	Mucosal addressin cell adhesion molecule 1 (MAdCAM-1) (hMAdCAM-1)
<b>Human Gene Id :</b>	8174
<b>Human Swiss Prot No :</b>	Q13477
<b>Mouse Swiss Prot No :</b>	Q61826
<b>Rat Swiss Prot No :</b>	O70540
<b>Immunogen :</b>	Synthesized peptide derived from human protein . at AA range: 260-340
<b>Specificity :</b>	MADCA Polyclonal Antibody detects endogenous levels of protein.
<b>Formulation :</b>	Liquid in PBS containing 50% glycerol, and 0.02% sodium azide.
<b>Source :</b>	Polyclonal, Rabbit,IgG
<b>Dilution :</b>	WB 1:500-2000 ELISA 1:5000-20000
<b>Purification :</b>	The antibody was affinity-purified from rabbit antiserum by affinity-chromatography using epitope-specific immunogen.
<b>Concentration :</b>	1 mg/ml

<b>Storage Stability :</b>	-15 °C to -25 °C/1 year(Do not lower than -25 °C)
<b>Observed Band :</b>	42kD
<b>Cell Pathway :</b>	Cell adhesion molecules (CAMs);Intestinal immune network for IgA production;
<b>Background :</b>	The protein encoded by this gene is an endothelial cell adhesion molecule that interacts preferentially with the leukocyte beta7 integrin LPAM-1 (alpha4beta7), L-selectin, and VLA-4 (alpha4beta1) on myeloid cells to direct leukocytes into mucosal and inflamed tissues. It is a member of the immunoglobulin family and is similar to ICAM1 and VCAM1. At least seven alternatively spliced transcripts encoding different protein isoforms have been found for this gene, but the full-length nature of some variants has not been determined. [provided by RefSeq, Jul 2008],
<b>Function :</b>	alternative products:Additional isoforms seem to exist,function:Cell adhesion leukocyte receptor expressed by mucosal venules, helps to direct lymphocyte traffic into mucosal tissues including the Peyer patches and the intestinal lamina propria. It can bind both integrin alpha-4/beta-7 and L-selectin, regulating both the passage and retention of leukocytes. Isoform 2, lacking the mucin-like domain, may be specialized in supporting integrin alpha-4/beta-7-dependent adhesion strengthening, independent of L-selectin binding.,polymorphism:The number of repeats in the mucin domain varies between 5 and 8 repeats.,PTM:The Ser/Thr-rich mucin-like domain may provide possible sites for O-glycosylation.,similarity:Contains 2 Ig-like (immunoglobulin-like) domains.,subunit:Homodimer.,tissue specificity:Highly expressed on high endothelial venules (HEV) and lamina propria venules found in the small int
<b>Subcellular Location :</b>	Membrane; Single-pass type I membrane protein.
<b>Expression :</b>	Highly expressed on high endothelial venules (HEV) and lamina propria venules found in the small intestine, and to a lesser extent in the colon and spleen. Very low levels of expression found in pancreas and brain. Not expressed in the thymus, prostate, ovaries, testis, heart, placenta, lung, liver, skeletal muscle, kidney or peripheral blood leukocytes.

## Products Images



Western blot analysis of lysates from Jurkat cells, primary antibody was diluted at 1:1000, 4° over night