

## RBBP8 (Phospho Ser664) Rabbit pAb

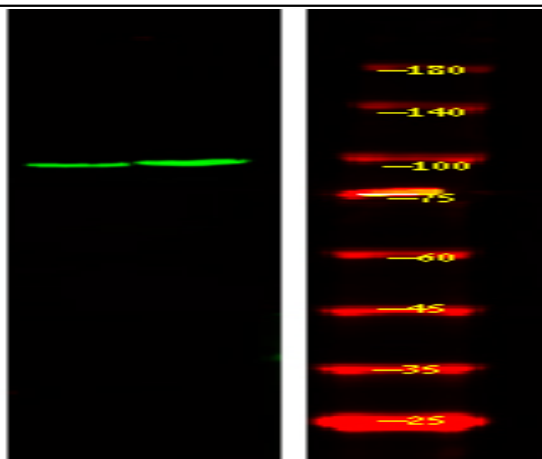
<b>Catalog No :</b>	YP1822
<b>Reactivity :</b>	Human;Mouse;Rat
<b>Applications :</b>	IHC;WB
<b>Target :</b>	CTIP
<b>Fields :</b>	>>Homologous recombination
<b>Gene Name :</b>	RBBP8 CTIP
<b>Protein Name :</b>	DNA endonuclease RBBP8 (EC 3.1.-.-) (CtBP-interacting protein) (CtIP) (Retinoblastoma-binding protein 8) (RBBP-8) (Retinoblastoma-interacting protein and myosin-like) (RIM) (Sporulation in the absence
<b>Human Gene Id :</b>	5932
<b>Human Swiss Prot No :</b>	Q99708
<b>Mouse Gene Id :</b>	225182
<b>Mouse Swiss Prot No :</b>	Q80YR6
<b>Rat Gene Id :</b>	291787
<b>Rat Swiss Prot No :</b>	B1WC58
<b>Immunogen :</b>	Synthesized peptide derived from human RBBP8 (Phospho Ser664)
<b>Specificity :</b>	This antibody detects endogenous levels of RBBP8 (Phospho Ser664) Rabbit pAb at Human, Mouse,Rat
<b>Formulation :</b>	Liquid in PBS containing 50% glycerol, and 0.02% sodium azide.
<b>Source :</b>	Rabbit,polyclonal
<b>Dilution :</b>	WB 1:500-2000 IHC 1:50-200

---

<b>Purification :</b>	The antibody was affinity-purified from rabbit serum by affinity-chromatography using specific immunogen.
<b>Concentration :</b>	1 mg/ml
<b>Storage Stability :</b>	-15°C to -25°C/1 year(Do not lower than -25°C)
<b>Observed Band :</b>	100kD
<b>Background :</b>	RB binding protein 8, endonuclease(RBBP8) Homo sapiens The protein encoded by this gene is a ubiquitously expressed nuclear protein. It is found among several proteins that bind directly to retinoblastoma protein, which regulates cell proliferation. This protein complexes with transcriptional co-repressor CTBP. It is also associated with BRCA1 and is thought to modulate the functions of BRCA1 in transcriptional regulation, DNA repair, and/or cell cycle checkpoint control. It is suggested that this gene may itself be a tumor suppressor acting in the same pathway as BRCA1. Three transcript variants encoding two different isoforms have been found for this gene. More transcript variants exist, but their full-length natures have not been determined. [provided by RefSeq, Jul 2008],
<b>Function :</b>	function:May modulate the functions ascribed to BRCA1 in transcriptional regulation, DNA repair, and/or cell cycle checkpoint control.,PTM:Phosphorylated upon DNA damage, probably by ATM or ATR. Hyperphosphorylation upon ionizing radiation results in dissociation from BRCA1.,PTM:Ubiquitinated; mediated by SIAH1 and leading to its subsequent proteasomal degradation.,subcellular location:Predominantly nuclear.,subunit:Interacts with CTBP, with the C-terminal (BRCT) domains of BRCA1, and with the retinoblastoma protein.,
<b>Subcellular Location :</b>	Nucleus . Chromosome . Associates with sites of DNA damage in S/G2 phase (PubMed:10764811, PubMed:25349192). Ubiquitinated RBBP8 binds to chromatin following DNA damage (PubMed:16818604). .
<b>Expression :</b>	Expressed in ER-positive breast cancer lines, but tends to be down-regulated ER-negative cells (at protein level).

---

## Products Images



Western Blot analysis of HepG2 cell, 2 Serum-free treated ,using primary antibody at 1:1000 dilution. Secondary antibody(catalog#:RS23920) was diluted at 1:10000