

**BORA (Phospho Ser497) rabbit pAb**

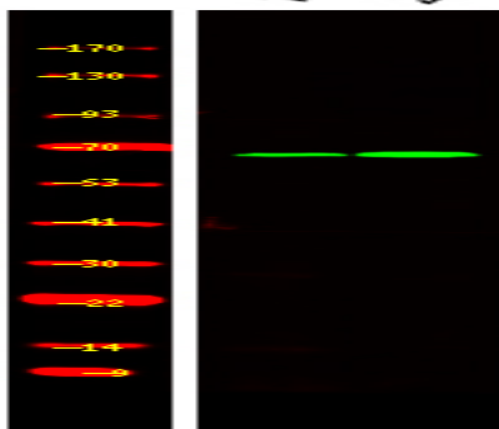
<b>Catalog No :</b>	YP1782
<b>Reactivity :</b>	Human;Mouse;Rat
<b>Applications :</b>	WB
<b>Target :</b>	BORA
<b>Gene Name :</b>	BORA C13orf34
<b>Protein Name :</b>	BORA (Phospho-Ser497)
<b>Human Gene Id :</b>	79866
<b>Human Swiss Prot No :</b>	Q6PGQ7
<b>Mouse Gene Id :</b>	77744
<b>Mouse Swiss Prot No :</b>	Q8BS90
<b>Rat Gene Id :</b>	306102
<b>Rat Swiss Prot No :</b>	Q5M864
<b>Immunogen :</b>	Synthesized peptide derived from human BORA (Phospho-Ser497)
<b>Specificity :</b>	This antibody detects endogenous levels of BORA (Phospho-Ser497) at Human, Mouse,Rat
<b>Formulation :</b>	Liquid in PBS containing 50% glycerol, 0.5% BSA and 0.02% sodium azide.
<b>Source :</b>	Polyclonal, Rabbit,IgG
<b>Dilution :</b>	WB 1:500-2000
<b>Purification :</b>	The antibody was affinity-purified from rabbit serum by affinity-chromatography using specific immunogen.

---

<b>Concentration :</b>	1 mg/ml
<b>Storage Stability :</b>	-15°C to -25°C/1 year(Do not lower than -25°C)
<b>Molecularweight :</b>	61kD
<b>Background :</b>	BORA is an activator of the protein kinase Aurora A (AURKA; MIM 603072), which is required for centrosome maturation, spindle assembly, and asymmetric protein localization during mitosis (Hutterer et al., 2006 [PubMed 16890155]).[supplied by OMIM, Mar 2008],
<b>Function :</b>	function:Required for the activation of Aurora-A (AURKA/STK6) at the onset of mitosis.,PTM:Phosphorylated by AURKA/STK6.,similarity:Belongs to the BORA family.,subunit:Interacts with AURKA/STK6.,
<b>Subcellular Location :</b>	cytosol,meiotic spindle,
<b>Expression :</b>	Bone marrow,Leiomyosarcoma,Rhabdomyosarcoma,Small intestine,Testis carcinom

---

## Products Images



Western Blot analysis of 1 Jurkat, 2, LPS 100ng/mL 30min treated ,using primary antibody at 1:1000 dilution. Secondary antibody(catalog#:RS23920) was diluted at 1:10000