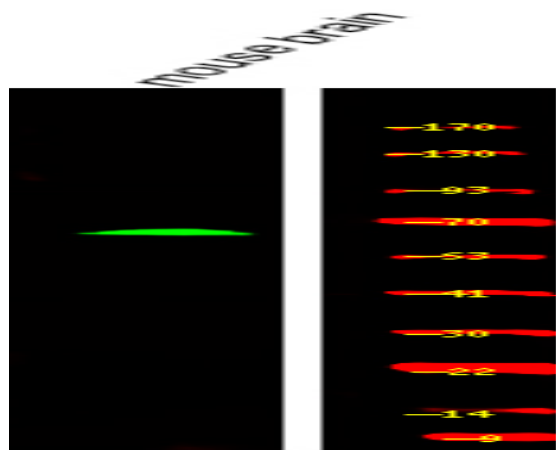


CRMP-1 (Phospho Tyr504) rabbit pAb

Catalog No :	YP1756
Reactivity :	Human;Mouse;Rat
Applications :	WB
Target :	CRMP-1
Gene Name :	CRMP1 DPYSL1 ULIP3
Protein Name :	CRMP-1 (Phospho-Tyr504)
Human Gene Id :	1400
Human Swiss Prot No :	Q14194
Mouse Gene Id :	12933
Mouse Swiss Prot No :	P97427
Rat Gene Id :	25415
Rat Swiss Prot No :	Q62950
Immunogen :	Synthesized peptide derived from human CRMP-1 (Phospho-Tyr504)
Specificity :	This antibody detects endogenous levels of CRMP-1 (Phospho-Tyr504) at Human, Mouse,Rat
Formulation :	Liquid in PBS containing 50% glycerol, 0.5% BSA and 0.02% sodium azide.
Source :	Polyclonal, Rabbit,IgG
Dilution :	WB 1:500-2000
Purification :	The antibody was affinity-purified from rabbit serum by affinity-chromatography using specific immunogen.

Concentration :	1 mg/ml
Storage Stability :	-15°C to -25°C/1 year(Do not lower than -25°C)
Molecularweight :	63kD
Background :	This gene encodes a member of a family of cytosolic phosphoproteins expressed exclusively in the nervous system. The encoded protein is thought to be a part of the semaphorin signal transduction pathway implicated in semaphorin-induced growth cone collapse during neural development. Alternative splicing results in multiple transcript variants. [provided by RefSeq, Jul 2008],
Function :	function:Necessary for signaling by class 3 semaphorins and subsequent remodeling of the cytoskeleton. Plays a role in axon guidance, invasive growth and cell migration.,similarity:Belongs to the DHOase family. Hydantoinase/dihydropyrimidinase subfamily.,subcellular location:Associated with centrosomes and the mitotic spindle during metaphase.,subunit:Homotetramer, and heterotetramer with DPYSL2, DPYSL3, DPYSL4 or DPYSL5. Interacts with PLXNA1.,tissue specificity:Brain.,
Subcellular Location :	Cytoplasm . Cytoplasm, cytoskeleton, microtubule organizing center, centrosome . Cytoplasm, cytoskeleton, spindle . Cell projection, growth cone . Cytoplasm, cytoskeleton . Perikaryon . Associated with centrosomes and the mitotic spindle during metaphase (PubMed:11562390). Colocalizes with FLNA and tubulin in the central region of DRG neuron growth cone (By similarity). Following SEMA3A stimulation of DRG neurons, colocalizes with F-actin (By similarity). .
Expression :	Brain.

Products Images



Western Blot analysis of various,using primary antibody at 1:1000 dilution. Secondary antibody(catalog#:RS23920) was diluted at 1:10000