

**NuaK1 (Phospho Ser600) rabbit pAb**

<b>Catalog No :</b>	YP1730
<b>Reactivity :</b>	Human;Mouse;Rat
<b>Applications :</b>	WB
<b>Target :</b>	NuaK1
<b>Gene Name :</b>	NUAK1 ARK5 KIAA0537 OMPHK1
<b>Protein Name :</b>	NuaK1 (Phospho-Ser600)
<b>Human Gene Id :</b>	9891
<b>Human Swiss Prot No :</b>	O60285
<b>Mouse Gene Id :</b>	77976
<b>Mouse Swiss Prot No :</b>	Q641K5
<b>Immunogen :</b>	Synthesized peptide derived from human NuaK1 (Phospho-Ser600)
<b>Specificity :</b>	This antibody detects endogenous levels of NuaK1 (Phospho-Ser600) at Human, Mouse,Rat
<b>Formulation :</b>	Liquid in PBS containing 50% glycerol, 0.5% BSA and 0.02% sodium azide.
<b>Source :</b>	Polyclonal, Rabbit,IgG
<b>Dilution :</b>	WB 1:500-2000
<b>Purification :</b>	The antibody was affinity-purified from rabbit serum by affinity-chromatography using specific immunogen.
<b>Concentration :</b>	1 mg/ml
<b>Storage Stability :</b>	-15°C to -25°C/1 year(Do not lower than -25°C)

**Molecularweight :** 73kD**Function :**

catalytic activity:ATP + a protein = ADP + a phosphoprotein.,cofactor:Magnesium.,enzyme regulation:Activated by PKB/AKT1 during glucose starvation. Activated by phosphorylation on Thr-211 by STK11 in complex with STE20-related adapter-alpha (STRAD alpha) pseudo kinase and CAB39.,function:Involved in tolerance to glucose starvation. Phosphorylates ATM. Suppresses Fas-induced apoptosis by phosphorylation of CASP6, thus suppressing the activation of the caspase and the subsequent cleavage of CFLAR.,similarity:Belongs to the protein kinase superfamily.,similarity:Belongs to the protein kinase superfamily. CAMK Ser/Thr protein kinase family. SNF1 subfamily.,similarity:Contains 1 protein kinase domain.,tissue specificity:Expressed at high levels in heart and brain, and at lower levels in skeletal muscle, kidney, ovary, placenta, lung and liver.,

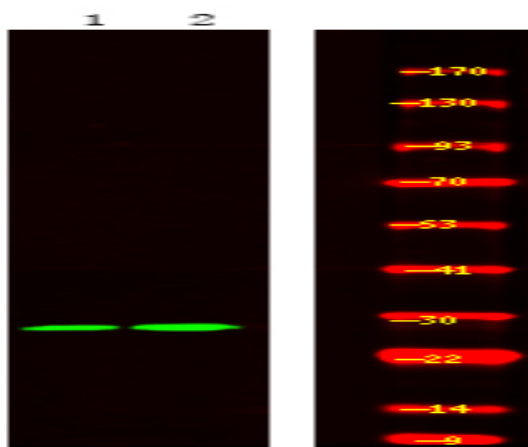
**Subcellular Location :**

Nucleus . Cytoplasm .

**Expression :**

Expressed at high levels in heart and brain, and at lower levels in skeletal muscle, kidney, ovary, placenta, lung and liver. Highly up-regulated in colorectal cancer cell lines.

## Products Images



Western Blot analysis of mouse brain and rat brain, using primary antibody at 1:1000 dilution. Secondary antibody (catalog#:RS23920) was diluted at 1:10000