

STAT5A/B (Phospho Ser725/730) rabbit pAb

Catalog No :	YP1729
Reactivity :	Human;Mouse;Rat
Applications :	WB
Target :	STAT5A/B
Fields :	>>ErbB signaling pathway;>>Necroptosis;>>JAK-STAT signaling pathway;>>Th1 and Th2 cell differentiation;>>Th17 cell differentiation;>>Prolactin signaling pathway;>>AGE-RAGE signaling pathway in diabetic complications;>>Growth hormone synthesis, secretion and action;>>Hepatitis B;>>Measles;>>Human T-cell leukemia virus 1 infection;>>Pathways in cancer;>>Viral carcinogenesis;>>Chemical carcinogenesis - receptor activation;>>Chronic myeloid leukemia;>>Acute myeloid leukemia;>>Non-small cell lung cancer
Gene Name :	STAT5A STAT5
Protein Name :	STAT5A/B (Phospho-Ser725/730)
Human Gene Id :	6776
Human Swiss Prot No :	P42229
Rat Gene Id :	24918
Rat Swiss Prot No :	Q62771
Immunogen :	Synthesized peptide derived from human STAT5A/B (Phospho-Ser725/730)
Specificity :	This antibody detects endogenous levels of STAT5A/B (Phospho-Ser725/730) at Human, Mouse,Rat
Formulation :	Liquid in PBS containing 50% glycerol, 0.5% BSA and 0.02% sodium azide.
Source :	Polyclonal, Rabbit,IgG
	WB 1:500-2000

Purification : The antibody was affinity-purified from rabbit serum by affinity-chromatography using specific immunogen.

Concentration : 1 mg/ml

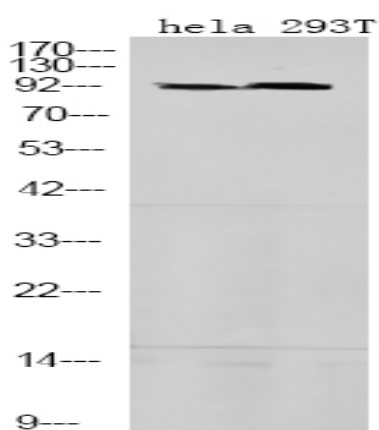
Storage Stability : -15°C to -25°C/1 year(Do not lower than -25°C)

Molecularweight : 87kD

Subcellular Location : Cytoplasm . Nucleus . Translocated into the nucleus in response to phosphorylation.

Expression : Brain,Cervix,Epithelium,Lung,Placenta,Synovial memb

Products Images



Western Blot analysis of hela 293T using primary antibody at 1:1000 dilution 4°C, overnight. Secondary antibody(catalog#:RS23920) was diluted at 1:10000 25°C 1.5hours