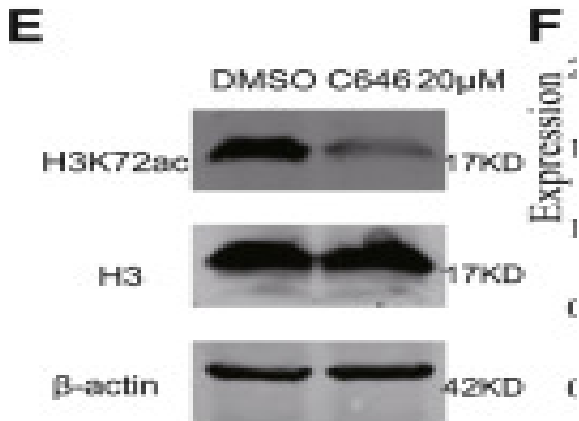


## Histone H3 (Acetyl Lys27) Polyclonal Antibody

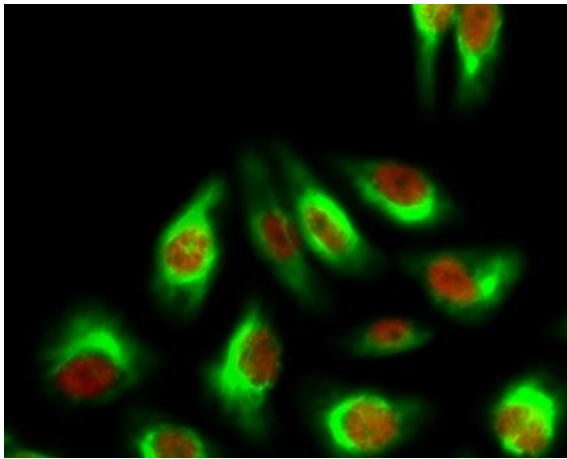
<b>Catalog No :</b>	YK0010
<b>Reactivity :</b>	Human;Mouse;Rat;Monkey;Arabidopsis thaliana
<b>Applications :</b>	WB;IHC;IF;IP;ELISA
<b>Target :</b>	Histone H3
<b>Fields :</b>	>>Neutrophil extracellular trap formation;>>Alcoholism;>>Shigellosis;>>Transcriptional misregulation in cancer;>>Systemic lupus erythematosus
<b>Gene Name :</b>	HIST1H3A/HIST1H3B/HIST1H3C/HIST1H3D/HIST1H3E/HIST1H3F/HIST1H3G/HIST1H3H/HIST1H3I/HIST1H3J/HIST2H3A/HIST2H3C/HIST2H3D/H3F3A/H3F3B
<b>Protein Name :</b>	Histone H3.1/Histone H3.2/Histone H3.3
<b>Human Gene Id :</b>	8350/8351/8352/8353/8354/8355/8356/8357/8358/8968/126961/333932/653604/3020/3021
<b>Human Swiss Prot No :</b>	P68431/Q71DI3/P84243
<b>Mouse Gene Id :</b>	319152/15077/15078
<b>Rat Gene Id :</b>	291159/100361558
<b>Rat Swiss Prot No :</b>	Q6LED0/P84245
<b>Immunogen :</b>	The antiserum was produced against synthesized peptide derived from human Histone H3 around the acetylated site of Lys27. AA range:11-60
<b>Specificity :</b>	Acetyl-Histone H3 (K27) Polyclonal Antibody detects endogenous levels of Histone H3 protein only when acetylated at K27.
<b>Formulation :</b>	Liquid in PBS containing 50% glycerol, 0.5% BSA and 0.02% sodium azide.
<b>Source :</b>	Polyclonal, Rabbit,IgG

<b>Dilution :</b>	WB 1:500 - 1:2000. IHC 1:100 - 1:300. IF 1:200 - 1:1000. IP 1:200 ELISA: 1:5000. Not yet tested in other applications.
<b>Purification :</b>	The antibody was affinity-purified from rabbit antiserum by affinity-chromatography using epitope-specific immunogen.
<b>Concentration :</b>	1 mg/ml
<b>Storage Stability :</b>	-15°C to -25°C/1 year(Do not lower than -25°C)
<b>Observed Band :</b>	17kD
<b>Cell Pathway :</b>	Protein_Acetylation
<b>Background :</b>	<p>Histones are basic nuclear proteins that are responsible for the nucleosome structure of the chromosomal fiber in eukaryotes. This structure consists of approximately 146 bp of DNA wrapped around a nucleosome, an octamer composed of pairs of each of the four core histones (H2A, H2B, H3, and H4). The chromatin fiber is further compacted through the interaction of a linker histone, H1, with the DNA between the nucleosomes to form higher order chromatin structures. This gene is intronless and encodes a replication-dependent histone that is a member of the histone H3 family. Transcripts from this gene lack polyA tails; instead, they contain a palindromic termination element. This gene is found in the large histone gene cluster on chromosome 6p22-p21.3. [provided by RefSeq, Aug 2015],</p>
<b>Function :</b>	<p>caution:Was originally (PubMed:2587222) thought to originate from mouse.,developmental stage:Expressed during S phase, then expression strongly decreases as cell division slows down during the process of differentiation.,function:Core component of nucleosome. Nucleosomes wrap and compact DNA into chromatin, limiting DNA accessibility to the cellular machineries which require DNA as a template. Histones thereby play a central role in transcription regulation, DNA repair, DNA replication and chromosomal stability. DNA accessibility is regulated via a complex set of post-translational modifications of histones, also called histone code, and nucleosome remodeling.,mass spectrometry:Monoisotopic with N-acetylserine PubMed:16457589,miscellaneous:This histone is only present in mammals and is enriched in acetylation of Lys-15 and dimethylation of Lys-10 (H3K9me2).,PTM:Acetylation is generally I</p>
<b>Subcellular Location :</b>	Nucleus. Chromosome.
<b>Expression :</b>	Blood,Epithelium,Kidney,Lung,Ovary,Spleen,Uterus,

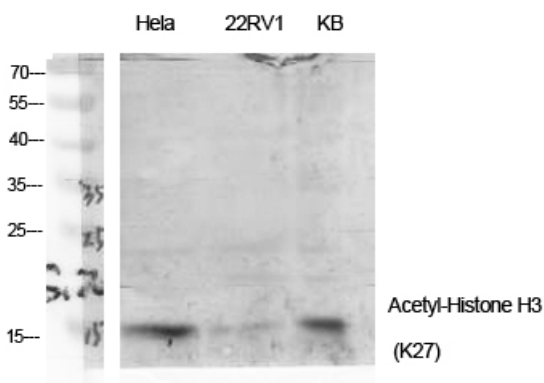
## Products Images



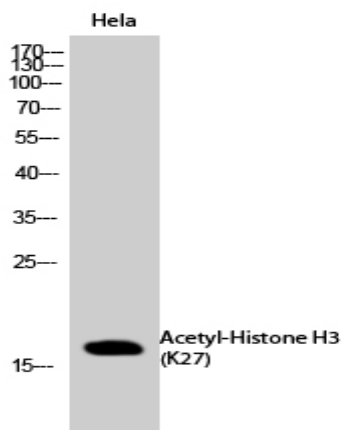
**F** Zhao, Hongying, et al. "Comprehensive landscape of epigenetic-dysregulated lncRNAs reveals a profound role of enhancers in carcinogenesis in BC subtypes." *Molecular Therapy-Nucleic Acids* 23 (2021): 667-681.



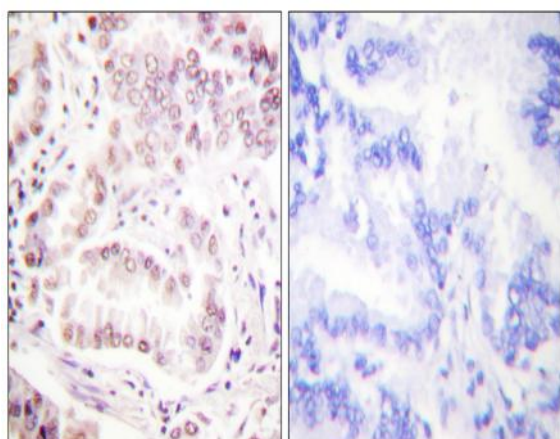
Immunofluorescence analysis of HeLa cell. 1, Histone H3 (Acetyl Lys27) Polyclonal Antibody (red) was diluted at 1:200 (4° overnight). CYCS Monoclonal Antibody (4B10) (green) was diluted at 1:200 (4° overnight). 2, Goat Anti Rabbit Alexa Fluor 594 Catalog:RS3611 was diluted at 1:1000 (room temperature, 50min). Goat Anti Mouse Alexa Fluor 488 Catalog:RS3208 was diluted at 1:1000 (room temperature, 50min).



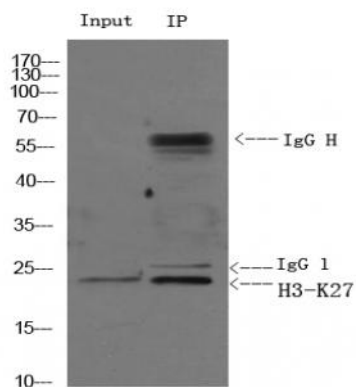
Western Blot analysis of various cells using Acetyl-Histone H3 (K27) Polyclonal Antibody diluted at 1:2000. Secondary antibody (catalog#:RS0002) was diluted at 1:20000



Western Blot analysis of HeLa cells using Acetyl-Histone H3 (K27) Polyclonal Antibody diluted at 1:2000. Secondary antibody(catalog#:RS0002) was diluted at 1:20000



Immunohistochemistry analysis of paraffin-embedded human lung carcinoma tissue, using Histone H3 (Acetyl-Lys27) Antibody. The picture on the right is blocked with the synthesized peptide.



1) Input: HeLa Lysate 2) IP product: IP dilute 1: 200 Western blot analysis: primary antibody : 1:2000 Secondary antibody: Goat anti-Mouse IgG(RS0002), 1: 5000