

**QIK/QSK (Phospho Thr175/163) rabbit pAb**

<b>Catalog No :</b>	YP1716
<b>Reactivity :</b>	Human;Mouse;Rat
<b>Applications :</b>	WB
<b>Target :</b>	QIK/QSK
<b>Fields :</b>	>>Glucagon signaling pathway
<b>Gene Name :</b>	SIK1 SIK SNF1LK
<b>Protein Name :</b>	QIK/QSK (Phospho-Thr175/163)
<b>Human Gene Id :</b>	150094
<b>Human Swiss Prot No :</b>	P57059
<b>Mouse Gene Id :</b>	17691
<b>Mouse Swiss Prot No :</b>	Q60670
<b>Rat Gene Id :</b>	59329
<b>Rat Swiss Prot No :</b>	Q9R1U5
<b>Immunogen :</b>	Synthesized peptide derived from human QIK/QSK (Phospho-Thr175/163)
<b>Specificity :</b>	This antibody detects endogenous levels of QIK/QSK (Phospho-Thr175/163) at Human, Mouse,Rat
<b>Formulation :</b>	Liquid in PBS containing 50% glycerol, 0.5% BSA and 0.02% sodium azide.
<b>Source :</b>	Polyclonal, Rabbit,IgG
<b>Dilution :</b>	WB 1:500-2000

**Purification :** The antibody was affinity-purified from rabbit serum by affinity-chromatography using specific immunogen.

**Concentration :** 1 mg/ml

**Storage Stability :** -15°C to -25°C/1 year(Do not lower than -25°C)

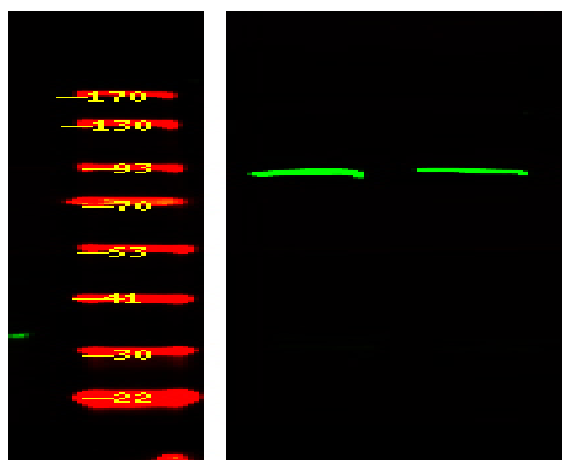
**Molecularweight :** 86kD

**Function :** catalytic activity:ATP + a protein = ADP + a phosphoprotein.,cofactor:Magnesium.,enzyme regulation:Activated by phosphorylation on Thr-182 by STK11 in complex with STE20-related adapter-alpha (STRAD alpha) pseudo kinase and CAB39.,function:Transient role during the earliest stages of myocardial cell differentiation and/or primitive chamber formation and may also be important for the earliest stages of skeletal muscle growth and/or differentiation. Potential role in G2/M cell cycle regulation. Inhibits CREB activity by phosphorylating and repressing the CREB-specific coactivators, CRTC1-3.,PTM:Phosphorylated upon DNA damage, probably by ATM or ATR.,similarity:Belongs to the protein kinase superfamily. CAMK Ser/Thr protein kinase family. AMPK subfamily.,similarity:Contains 1 protein kinase domain.,similarity:Contains 1 UBA domain.,subcellular location:Translocates to the cytoplasm on phosp

**Subcellular Location :** Cytoplasm . Nucleus . Locates to cytoplasm when inactive following cAMP-induced phosphorylation, probably by PKA (PubMed:29211348).

**Expression :** Fetal lung,Spleen,Testis,

## Products Images



Western Blot analysis of 1 HeLa cell, 2 LPS 100ng/mL 30min treated ,using primary antibody at 1:1000 dilution. Secondary antibody(catalog#:RS23920) was diluted at 1:10000