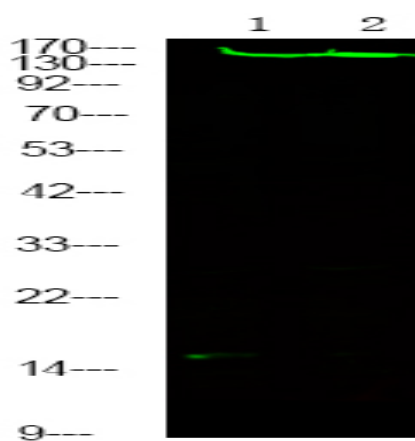


ROCK2 (Phospho Tyr722) rabbit pAb

Catalog No :	YP1714
Reactivity :	Human;Mouse;Rat
Applications :	WB
Target :	ROCK2
Fields :	>>cGMP-PKG signaling pathway;>>cAMP signaling pathway;>>Chemokine signaling pathway;>>Sphingolipid signaling pathway;>>Vascular smooth muscle contraction;>>Wnt signaling pathway;>>Axon guidance;>>Focal adhesion;>>Tight junction;>>Platelet activation;>>Leukocyte transendothelial migration;>>Regulation of actin cytoskeleton;>>Oxytocin signaling pathway;>>Pathogenic Escherichia coli infection;>>Shigellosis;>>Salmonella infection;>>Yersinia infection;>>Human cytomegalovirus infection;>>Pathways in cancer;>>Proteoglycans in cancer;>>Lipid and atherosclerosis
Gene Name :	ROCK2 KIAA0619
Protein Name :	ROCK2 (Phospho-Tyr722)
Human Gene Id :	9475
Human Swiss Prot No :	O75116
Mouse Gene Id :	19878
Mouse Swiss Prot No :	P70336
Rat Gene Id :	25537
Rat Swiss Prot No :	Q62868
Immunogen :	Synthesized peptide derived from human ROCK2 (Phospho-Tyr722)
Specificity :	This antibody detects endogenous levels of ROCK2 (Phospho-Tyr722) at Human, Mouse,Rat
	Liquid in PBS containing 50% glycerol, 0.5% BSA and 0.02% sodium azide.

Formulation :	Polyclonal, Rabbit,IgG
Dilution :	WB 1:500-2000
Purification :	The antibody was affinity-purified from rabbit serum by affinity-chromatography using specific immunogen.
Concentration :	1 mg/ml
Storage Stability :	-15°C to -25°C/1 year(Do not lower than -25°C)
Molecularweight :	153kD
Background :	The protein encoded by this gene is a serine/threonine kinase that regulates cytokinesis, smooth muscle contraction, the formation of actin stress fibers and focal adhesions, and the activation of the c-fos serum response element. This protein, which is an isozyme of ROCK1 is a target for the small GTPase Rho. [provided by RefSeq, Jul 2008],
Function :	catalytic activity:ATP + a protein = ADP + a phosphoprotein.,enzyme regulation:Activated by RHOA binding.,function:Protein kinase that phosphorylates a large number of important signaling proteins, and thereby regulates the assembly of the actin cytoskeleton. Promotes formation of stress fibers and of focal adhesion complexes. Plays a role in smooth muscle contraction.,miscellaneous:Inhibited by Y-27632.,PTM:Phosphorylated upon DNA damage, probably by ATM or ATR.,similarity:Belongs to the protein kinase superfamily. AGC Ser/Thr protein kinase family.,similarity:Contains 1 AGC-kinase C-terminal domain.,similarity:Contains 1 PH domain.,similarity:Contains 1 phorbol-ester/DAG-type zinc finger.,similarity:Contains 1 protein kinase domain.,similarity:Contains 1 REM (Hr1) repeat.,subcellular location:Cytoplasmic, and associated with actin microfilaments and the plasma membrane.,subunit:Homodim
Subcellular Location :	Cytoplasm. Cell membrane ; Peripheral membrane protein . Nucleus. Cytoplasm, cytoskeleton, microtubule organizing center, centrosome. Cytoplasmic, and associated with actin microfilaments and the plasma membrane. .
Expression :	Expressed in the brain (at protein level).

Products Images



Western Blot analysis of mouse spleen /Hela ,using primary antibody at 1:1000 dilution. Secondary antibody(catalog#:RS23920) was diluted at 1:10000