

## Histone H1 (Phospho Thr3) Polyclonal Antibody

<b>Catalog No :</b>	YP1655
<b>Reactivity :</b>	Human;Mouse;Rat
<b>Applications :</b>	WB
<b>Target :</b>	Histone H1
<b>Gene Name :</b>	HIST1H1A/HIST1H1C/HIST1H1D/HIST1H1E
<b>Protein Name :</b>	Histone H1.1/Histone H1.2/Histone H1.3/Histone H1.4
<b>Human Gene Id :</b>	3024/3006/3007/3008
<b>Human Swiss Prot No :</b>	Q02539/P16403/P16402/P10412
<b>Mouse Gene Id :</b>	80838/50708/14957/50709
<b>Rat Gene Id :</b>	291145/201097
<b>Rat Swiss Prot No :</b>	D4A3K5/P15865
<b>Immunogen :</b>	Synthetic Peptide of Histone H1 (Phospho Thr3)
<b>Specificity :</b>	The antibody detects endogenous Histone H1 (Phospho Thr3) protein.
<b>Formulation :</b>	PBS, pH 7.4, containing 0.5%BSA, 0.02% sodium azide as Preservative and 50% Glycerol.
<b>Source :</b>	Polyclonal, Rabbit,IgG
<b>Dilution :</b>	WB 1:1000-2000
<b>Purification :</b>	The antibody was affinity-purified from rabbit antiserum by affinity-chromatography using specific immunogen.
<b>Storage Stability :</b>	-15°C to -25°C/1 year(Do not lower than -25°C)

**Observed Band :** 17-25kD**Background :**

Histones are basic nuclear proteins responsible for nucleosome structure of the chromosomal fiber in eukaryotes. Two molecules of each of the four core histones (H2A, H2B, H3, and H4) form an octamer, around which approximately 146 bp of DNA is wrapped in repeating units, called nucleosomes. The linker histone, H1, interacts with linker DNA between nucleosomes and functions in the compaction of chromatin into higher order structures. This gene is intronless and encodes a replication-dependent histone that is a member of the histone H1 family. Transcripts from this gene lack polyA tails but instead contain a palindromic termination element. This gene is found in the large histone gene cluster on chromosome 6. [provided by RefSeq, Aug 2015],

**Function :**

function:Histones H1 are necessary for the condensation of nucleosome chains into higher order structures.,similarity:Belongs to the histone H1/H5 family.,

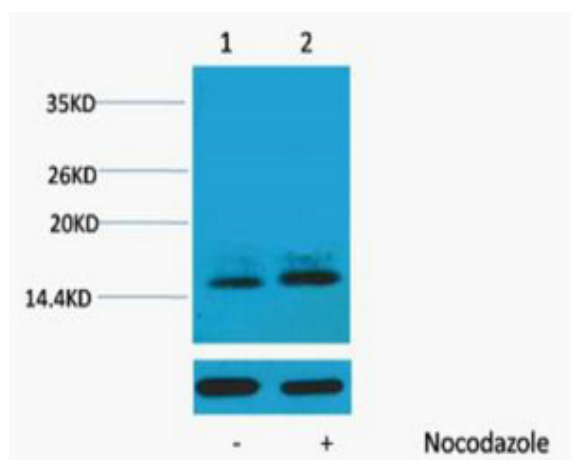
**Subcellular Location :**

Nucleus . Chromosome . Mainly localizes in euchromatin.

**Expression :**

Placenta,

## Products Images



Western blot analysis of extracts from HeLa cells, untreated (-) or treated, 1:5000. Secondary antibody(catalog#:RS0002) was diluted at 1:20000