

**14-3-3 $\sigma$  (Phospho Ser186) rabbit pAb**

<b>Catalog No :</b>	YP1614
<b>Reactivity :</b>	Human;Mouse
<b>Applications :</b>	WB;ELISA
<b>Target :</b>	14-3-3 $\sigma$
<b>Fields :</b>	>>Cell cycle;>>p53 signaling pathway;>>Aldosterone-regulated sodium reabsorption
<b>Gene Name :</b>	SFN HME1
<b>Protein Name :</b>	14-3-3 $\sigma$ (Phospho Ser186)
<b>Human Gene Id :</b>	2810
<b>Human Swiss Prot No :</b>	P31947
<b>Mouse Gene Id :</b>	55948
<b>Mouse Swiss Prot No :</b>	O70456
<b>Immunogen :</b>	Synthesized peptide derived from human 14-3-3 $\sigma$ (Phospho Ser186)
<b>Specificity :</b>	This antibody detects endogenous levels of Human,Mouse 14-3-3 $\sigma$ (Phospho Ser186)
<b>Formulation :</b>	Liquid in PBS containing 50% glycerol, 0.5% BSA and 0.02% sodium azide.
<b>Source :</b>	Polyclonal, Rabbit,IgG
<b>Dilution :</b>	WB 1:1000-2000 ELISA 1:5000-20000
<b>Purification :</b>	The antibody was affinity-purified from rabbit serum by affinity-chromatography using specific immunogen.
<b>Concentration :</b>	1 mg/ml

**Storage Stability :** -15°C to -25°C/1 year(Do not lower than -25°C)

**Observed Band :** 30kD

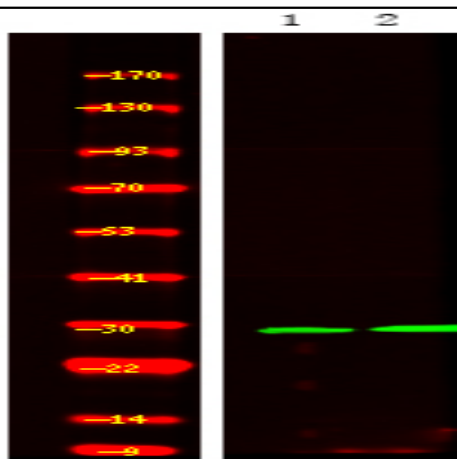
**Background :** function:Adapter protein implicated in the regulation of a large spectrum of both general and specialized signaling pathway. Binds to a large number of partners, usually by recognition of a phosphoserine or phosphothreonine motif. Binding generally results in the modulation of the activity of the binding partner. When bound to KRT17, regulates protein synthesis and epithelial cell growth by stimulating Akt/mTOR pathway.,function:p53-regulated inhibitor of G2/M progression.,similarity:Belongs to the 14-3-3 family.,subcellular location:May be secreted by a non-classical secretory pathway.,subunit:Homodimer. Interacts with KRT17 (By similarity). Found in a complex with XPO7, EIF4A1, ARHGAP1, VPS26A, VPS29, VPS35 and SFN.,tissue specificity:Present mainly in tissues enriched in stratified squamous keratinising epithelium.,

**Function :** function:Adapter protein implicated in the regulation of a large spectrum of both general and specialized signaling pathway. Binds to a large number of partners, usually by recognition of a phosphoserine or phosphothreonine motif. Binding generally results in the modulation of the activity of the binding partner. When bound to KRT17, regulates protein synthesis and epithelial cell growth by stimulating Akt/mTOR pathway.,function:p53-regulated inhibitor of G2/M progression.,similarity:Belongs to the 14-3-3 family.,subcellular location:May be secreted by a non-classical secretory pathway.,subunit:Homodimer. Interacts with KRT17 (By similarity). Found in a complex with XPO7, EIF4A1, ARHGAP1, VPS26A, VPS29, VPS35 and SFN.,tissue specificity:Present mainly in tissues enriched in stratified squamous keratinising epithelium.,

**Subcellular Location :** Cytoplasm. Nucleus . Secreted. May be secreted by a non-classical secretory pathway.

**Expression :** Present mainly in tissues enriched in stratified squamous keratinizing epithelium.

## Products Images



Western Blot analysis of 1 A431 cell 2 LPS 100ng/mL 30min treated ,using primary antibody at 1:1000 dilution. Secondary antibody(catalog#:RS23920) was diluted at 1:10000