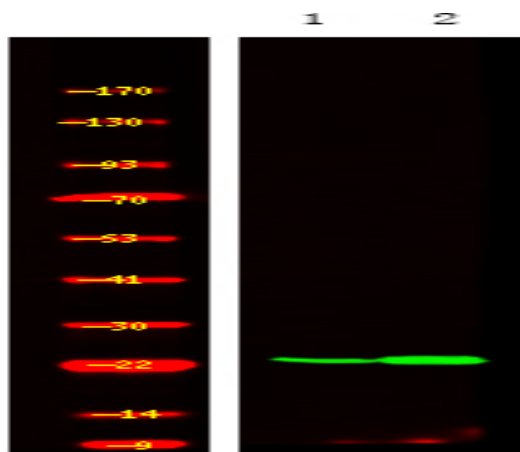


**R-Ras (Phospho Tyr66) rabbit pAb**

|                              |  |
|------------------------------|--|
| <b>Catalog No :</b>          | YP1793   |
| <b>Reactivity :</b>          | Human;Mouse;Rat  |
| <b>Applications :</b>        | WB   |
| <b>Target :</b>              | R-Ras  |
| <b>Fields :</b>              | >>MAPK signaling pathway;>>Ras signaling pathway;>>Rap1 signaling pathway;>>cAMP signaling pathway;>>Phospholipase D signaling pathway;>>Mitophagy - animal;>>Autophagy - animal;>>Cellular senescence;>>Axon guidance;>>Apelin signaling pathway;>>C-type lectin receptor signaling pathway;>>Regulation of actin cytoskeleton;>>Salmonella infection;>>Proteoglycans in cancer |
| <b>Gene Name :</b>           | RRAS   |
| <b>Protein Name :</b>        | R-Ras (Phospho-Tyr66)  |
| <b>Human Gene Id :</b>       | 6237   |
| <b>Human Swiss Prot No :</b> | P10301   |
| <b>Mouse Gene Id :</b>       | 20130  |
| <b>Mouse Swiss Prot No :</b> | P10833   |
| <b>Rat Gene Id :</b>         | 361568   |
| <b>Rat Swiss Prot No :</b>   | D3Z8L7   |
| <b>Immunogen :</b>           | Synthesized peptide derived from human R-Ras (Phospho-Tyr66)   |
| <b>Specificity :</b>         | This antibody detects endogenous levels of R-Ras (Phospho-Tyr66) at Human, Mouse,Rat   |
| <b>Formulation :</b>         | Liquid in PBS containing 50% glycerol, 0.5% BSA and 0.02% sodium azide.  |

|                               |   |
|-------------------------------|---|
| <b>Source :</b>               | Polyclonal, Rabbit,IgG  |
| <b>Dilution :</b>             | WB 1:500-2000   |
| <b>Purification :</b>         | The antibody was affinity-purified from rabbit serum by affinity-chromatography using specific immunogen.   |
| <b>Concentration :</b>        | 1 mg/ml   |
| <b>Storage Stability :</b>    | -15°C to -25°C/1 year(Do not lower than -25°C)  |
| <b>Molecularweight :</b>      | 24kD  |
| <b>Background :</b>           | The protein encoded by this gene is a small GTPase involved in diverse processes including angiogenesis, vascular homeostasis and regeneration, cell adhesion, and neuronal axon guidance. Mutations in this gene are found in many invasive cancers. [provided by RefSeq, Jul 2015],                                 |
| <b>Function :</b>             | function:Regulates the organization of the actin cytoskeleton.,similarity:Belongs to the small GTPase superfamily. Ras family.,subcellular location:Inner surface of plasma membrane possibly with attachment requiring acylation of the C-terminal cysteine (By similarity with RAS).,subunit:Interacts with PLCE1., |
| <b>Subcellular Location :</b> | Cell membrane ; Lipid-anchor ; Cytoplasmic side . Inner surface of plasma membrane possibly with attachment requiring acylation of the C-terminal cysteine (By similarity with RAS).  |
| <b>Expression :</b>           | Adipocyte,Brain,Uterus,   |

## Products Images



Western Blot analysis of A549 cell,2, LPS 100ng/mL 30min treated ,using primary antibody at 1:1000 dilution. Secondary antibody(catalog#:RS23920) was diluted at 1:10000