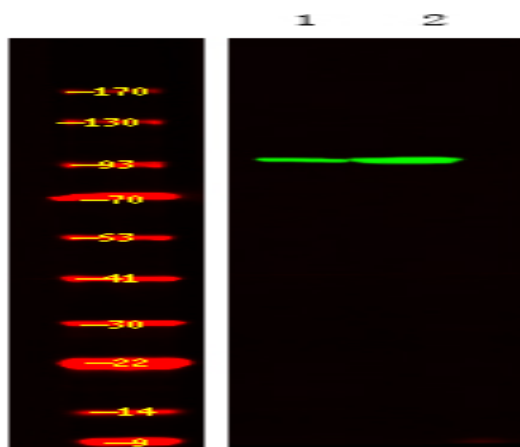


HSP105 (Phospho Ser809) rabbit pAb

| | |
|------------------------------|--|
| Catalog No : | YP1791 |
| Reactivity : | Human;Mouse;Rat |
| Applications : | WB |
| Target : | HSP105 |
| Fields : | >>Protein processing in endoplasmic reticulum |
| Gene Name : | HSPH1 HSP105 HSP110 KIAA0201 |
| Protein Name : | HSP105 (Phospho-Ser809) |
| Human Gene Id : | 10808 |
| Human Swiss Prot No : | Q92598 |
| Mouse Gene Id : | 15505 |
| Mouse Swiss Prot No : | Q61699 |
| Rat Gene Id : | 288444 |
| Rat Swiss Prot No : | Q66HA8 |
| Immunogen : | Synthesized peptide derived from human HSP105 (Phospho-Ser809) |
| Specificity : | This antibody detects endogenous levels of HSP105 (Phospho-Ser809) at Human, Mouse,Rat |
| Formulation : | Liquid in PBS containing 50% glycerol, 0.5% BSA and 0.02% sodium azide. |
| Source : | Polyclonal, Rabbit,IgG |
| Dilution : | WB 1:500-2000 |

| | |
|-------------------------------|---|
| Purification : | The antibody was affinity-purified from rabbit serum by affinity-chromatography using specific immunogen. |
| Concentration : | 1 mg/ml |
| Storage Stability : | -15°C to -25°C/1 year(Do not lower than -25°C) |
| Molecularweight : | 94kD |
| Function : | function:Prevents the aggregation of denatured proteins in cells under severe stress, on which the ATP levels decrease markedly. Inhibits HSPA8/HSC70 ATPase and chaperone activities.,PTM:Phosphorylation on Ser-509 may be important for regulation of the HSPA8/HSC70 chaperone activity.,similarity:Belongs to the heat shock protein 70 family.,subunit:Interacts with HSPA8/HSC70.,tissue specificity:Highly expressed in testis. Present at lower levels in most brain regions, except cerebellum. Overexpressed in cancer cells., |
| Subcellular Location : | Cytoplasm . |
| Expression : | Highly expressed in testis. Present at lower levels in most brain regions, except cerebellum. Overexpressed in cancer cells. |

Products Images



Western Blot analysis of MCF7 cell, 2, LPS 100ng/mL 30min treated ,using primary antibody at 1:1000 dilution. Secondary antibody(catalog#:RS23920) was diluted at 1:10000