

EPHA6 (Phospho Tyr978) rabbit pAb

Catalog No :	YP1790
Reactivity :	Human;Mouse;Rat
Applications :	WB
Target :	EPHA6
Fields :	>>Axon guidance
Gene Name :	EPHA6 EHK2 HEK12
Protein Name :	EPHA6 (Phospho-Tyr978)
Human Gene Id :	285220
Human Swiss Prot No :	Q9UF33
Mouse Swiss Prot No :	Q62413
Rat Swiss Prot No :	P54758
Immunogen :	Synthesized peptide derived from human EPHA6 (Phospho-Tyr978)
Specificity :	This antibody detects endogenous levels of EPHA6 (Phospho-Tyr978) at Human, Mouse,Rat
Formulation :	Liquid in PBS containing 50% glycerol, 0.5% BSA and 0.02% sodium azide.
Source :	Polyclonal, Rabbit,IgG
Dilution :	WB 1:500-2000
Purification :	The antibody was affinity-purified from rabbit serum by affinity-chromatography using specific immunogen.
Concentration :	1 mg/ml

Storage Stability : -15°C to -25°C/1 year(Do not lower than -25°C)

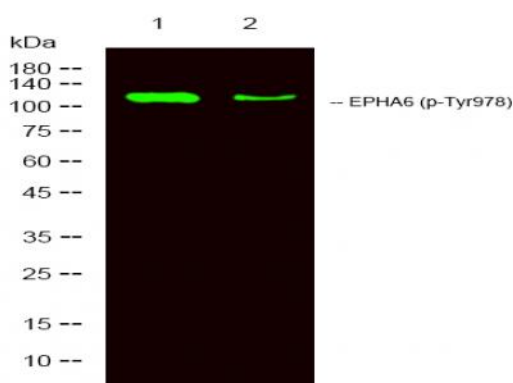
Observed Band : 116kD

Function : catalytic activity:ATP + a [protein]-L-tyrosine = ADP + a [protein]-L-tyrosine phosphate.,function:Receptor for members of the ephrin-A family.,similarity:Belongs to the protein kinase superfamily. Tyr protein kinase family. Ephrin receptor subfamily.,similarity:Contains 1 protein kinase domain.,similarity:Contains 1 SAM (sterile alpha motif) domain.,similarity:Contains 2 fibronectin type-III domains.,tissue specificity:Expressed in brain and testis.,

Subcellular Location : Membrane ; Single-pass type I membrane protein .

Expression : Expressed in brain and testis.

Products Images



Western Blot analysis of 1 HeLa, 2 treated with LPS 100ng/mL 20min,using primary antibody at 1:1000 dilution. Secondary antibody(catalog#:RS23920) was diluted at 1:10000