

GRK1/2 (Phospho Tyr13) rabbit pAb

| | |
|------------------------------|--|
| Catalog No : | YP1789 |
| Reactivity : | Human;Mouse;Rat |
| Applications : | WB |
| Target : | GRK1/2 |
| Fields : | >>Chemokine signaling pathway;>>Endocytosis;>>Hedgehog signaling pathway;>>Glutamatergic synapse;>>Olfactory transduction;>>Morphine addiction |
| Gene Name : | ADRBK1 BARK BARK1 GRK2 |
| Protein Name : | GRK1/2 (Phospho-Tyr13) |
| Human Gene Id : | 156 |
| Human Swiss Prot No : | P25098 |
| Mouse Swiss Prot No : | Q99MK8 |
| Rat Gene Id : | 25238 |
| Rat Swiss Prot No : | P26817 |
| Immunogen : | Synthesized peptide derived from human GRK1/2 (Phospho-Tyr13) |
| Specificity : | This antibody detects endogenous levels of GRK1/2 (Phospho-Tyr13) at Human, Mouse,Rat |
| Formulation : | Liquid in PBS containing 50% glycerol, 0.5% BSA and 0.02% sodium azide. |
| Source : | Polyclonal, Rabbit,IgG |
| Dilution : | WB 1:500-2000 |
| Purification : | The antibody was affinity-purified from rabbit serum by affinity-chromatography |

using specific immunogen.

Concentration : 1 mg/ml

Storage Stability : -15°C to -25°C/1 year(Do not lower than -25°C)

Molecularweight : 76kD

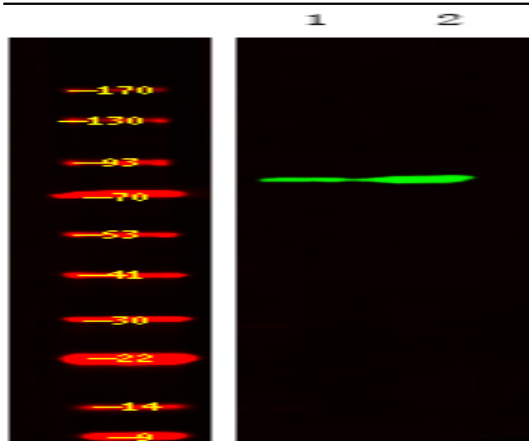
Background : The product of this gene phosphorylates the beta-2-adrenergic receptor and appears to mediate agonist-specific desensitization observed at high agonist concentrations. This protein is an ubiquitous cytosolic enzyme that specifically phosphorylates the activated form of the beta-adrenergic and related G-protein-coupled receptors. Abnormal coupling of beta-adrenergic receptor to G protein is involved in the pathogenesis of the failing heart. [provided by RefSeq, Jul 2008],

Function : catalytic activity:ATP + [beta-adrenergic receptor] = ADP + [beta-adrenergic receptor] phosphate.,catalytic activity:ATP + a protein = ADP + a phosphoprotein.,function:Specifically phosphorylates the agonist-occupied form of the beta-adrenergic and closely related receptors, probably inducing a desensitization of them.,online information:Beta adrenergic receptor kinase entry,similarity:Belongs to the protein kinase superfamily. AGC Ser/Thr protein kinase family. GPRK subfamily.,similarity:Contains 1 AGC-kinase C-terminal domain.,similarity:Contains 1 PH domain.,similarity:Contains 1 protein kinase domain.,similarity:Contains 1 RGS domain.,subunit:Interacts with GIT1 (By similarity). Interacts with, and phosphorylates chemokine-stimulated CCR5.,tissue specificity:Expressed in peripheral blood leukocytes.,

Subcellular Location : Cytoplasm . Cell membrane . Cell junction, synapse, postsynapse . Cell junction, synapse, presynapse .

Expression : Expressed in peripheral blood leukocytes.

Products Images



Western Blot analysis of 1 Jurkat cell,2, LPS 100ng/mL 30min treated ,using primary antibody at 1:1000 dilution. Secondary antibody(catalog#:RS23920) was diluted at 1:10000