

BCLAF1 (Phospho Ser531) rabbit pAb

| | |
|------------------------------|---|
| Catalog No : | YP1781 |
| Reactivity : | Human;Mouse;Rat |
| Applications : | WB |
| Target : | BCLAF1 |
| Gene Name : | BCLAF1 BTF KIAA0164 |
| Protein Name : | BCLAF1 (Phospho-Ser531) |
| Human Gene Id : | 9774 |
| Human Swiss Prot No : | Q9NYF8 |
| Mouse Gene Id : | 72567 |
| Mouse Swiss Prot No : | Q8K019 |
| Immunogen : | Synthesized peptide derived from human BCLAF1 (Phospho-Ser531) |
| Specificity : | This antibody detects endogenous levels of BCLAF1 (Phospho-Ser531) at Human, Mouse,Rat |
| Formulation : | Liquid in PBS containing 50% glycerol, 0.5% BSA and 0.02% sodium azide. |
| Source : | Polyclonal, Rabbit,IgG |
| Dilution : | WB 1:500-2000 |
| Purification : | The antibody was affinity-purified from rabbit serum by affinity-chromatography using specific immunogen. |
| Concentration : | 1 mg/ml |
| Storage Stability : | -15°C to -25°C/1 year(Do not lower than -25°C) |

Molecularweight : 101kD

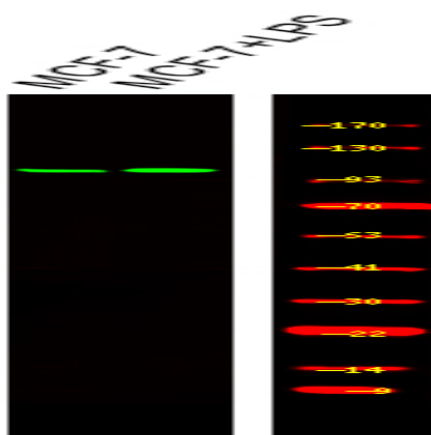
Background : This gene encodes a transcriptional repressor that interacts with several members of the BCL2 family of proteins. Overexpression of this protein induces apoptosis, which can be suppressed by co-expression of BCL2 proteins. The protein localizes to dot-like structures throughout the nucleus, and redistributes to a zone near the nuclear envelope in cells undergoing apoptosis. Multiple transcript variants encoding different isoforms have been found for this gene. [provided by RefSeq, Jul 2008],

Function : function:Death-promoting transcriptional repressor.,sequence caution:Contaminating sequence. Potential poly-A sequence.,subunit:Interacts with Bcl-2 related proteins, EMD, with the adenovirus E1B 19 kDa protein and with DNA.,tissue specificity:Ubiquitous.,

Subcellular Location : Cytoplasm. Nucleus. Nucleus speckle . Nucleus, nucleoplasm .

Expression : Ubiquitous.

Products Images



Western Blot analysis of various,using primary antibody at 1:1000 dilution. Secondary antibody(catalog#:RS23920) was diluted at 1:10000