

TIF1 β (Phospho Ser824) rabbit pAb

| | |
|------------------------------|---|
| Catalog No : | YP1531 |
| Reactivity : | Human;Rat;Mouse; |
| Applications : | WB;ELISA;IHC |
| Target : | TIF1 β |
| Gene Name : | TRIM28 KAP1 RNF96 TIF1B |
| Protein Name : | TIF1 β (Ser824) |
| Human Gene Id : | 10155 |
| Human Swiss Prot No : | Q13263 |
| Mouse Gene Id : | 21849 |
| Mouse Swiss Prot No : | Q62318 |
| Rat Gene Id : | 116698 |
| Rat Swiss Prot No : | O08629 |
| Immunogen : | Synthesized phospho peptide around human TIF1 β (Ser824) |
| Specificity : | This antibody detects endogenous levels of Human TIF1 β (phospho-Ser824) |
| Formulation : | Liquid in PBS containing 50% glycerol, 0.5% BSA and 0.02% sodium azide. |
| Source : | Polyclonal, Rabbit,IgG |
| Dilution : | WB 1:500-2000;IHC 1:50-300; ELISA 2000-20000 |
| Purification : | The antibody was affinity-purified from rabbit serum by affinity-chromatography using specific immunogen. |

Concentration : 1 mg/ml

Storage Stability : -15°C to -25°C/1 year(Do not lower than -25°C)

Observed Band : 110kD

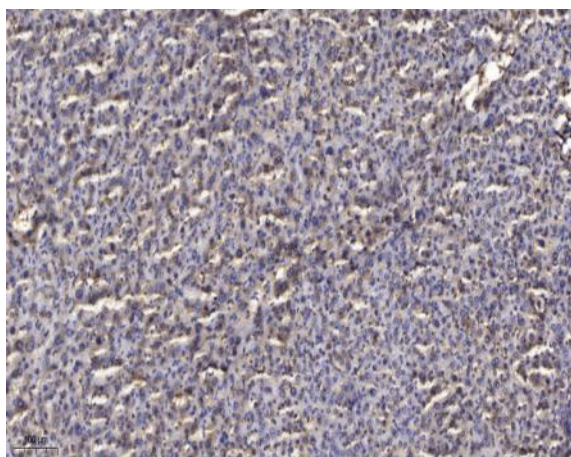
Background : The protein encoded by this gene mediates transcriptional control by interaction with the Kruppel-associated box repression domain found in many transcription factors. The protein localizes to the nucleus and is thought to associate with specific chromatin regions. The protein is a member of the tripartite motif family. This tripartite motif includes three zinc-binding domains, a RING, a B-box type 1 and a B-box type 2, and a coiled-coil region. [provided by RefSeq, Jul 2008],

Function : domain:Contains one Pro-Xaa-Val-Xaa-Leu (PxVxL) motif, which is required for interaction with chromoshadow domains. This motif requires additional residues -7, -6, +4 and +5 of the central Val which contact the chromoshadow domain.,domain:The HP1 box is both necessary and sufficient for HP1 binding. The RING finger domain and the B-box domains mediate interaction with CEBPB. The PHD domain enhances the CEBPB transcriptional activity.,function:Forms a complex with a KRAB-domain transcription factor and increases the efficiency of KRAB-mediated repression. Silences transcription through an interaction with HP1 proteins. Acts as a corepressor of transcription for the KRAB zinc finger proteins and as a moderator of the repression activity. May play a role as a coactivator for CEBPB and NR3C1 in the transcriptional activation of the Alpha-1-acid glycoprotein gene.,PTM:Phosphorylated upon DNA

Subcellular Location : Nucleus . Associated with centromeric heterochromatin during cell differentiation through CBX1. .

Expression : Expressed in all tissues tested including spleen, thymus, prostate, testis, ovary, small intestine, colon and peripheral blood leukocytes.

Products Images



Immunohistochemical analysis of paraffin-embedded human liver cancer. 1, Antibody was diluted at 1:200(4° overnight). 2, Tris-EDTA,pH9.0 was used for antigen retrieval. 3,Secondary antibody was diluted at 1:200(room temperature, 45min).

Western Blot analysis of 1 HeLa, 2 treated with LPS 100ng/mL 20min, using primary antibody at 1:1000 dilution. Secondary antibody (catalog#:RS23920) was diluted at 1:10000

