

Stathmin (Phospho Ser16) rabbit pAb

| | |
|------------------------------|---|
| Catalog No : | YP1516 |
| Reactivity : | Human;Mouse;Rat |
| Applications : | WB;ELISA;IHC |
| Target : | Stathmin |
| Gene Name : | STMN2 SCG10 SCGN10 |
| Protein Name : | Stathmin (Ser16) |
| Human Gene Id : | 11075 |
| Human Swiss Prot No : | Q93045 |
| Mouse Gene Id : | 20257 |
| Mouse Swiss Prot No : | P55821 |
| Rat Gene Id : | 84510 |
| Rat Swiss Prot No : | P21818 |
| Immunogen : | Synthesized phospho peptide around human Stathmin (Ser16) |
| Specificity : | This antibody detects endogenous levels of Human Mouse Rat Stathmin (phospho-Ser16) |
| Formulation : | Liquid in PBS containing 50% glycerol, 0.5% BSA and 0.02% sodium azide. |
| Source : | Polyclonal, Rabbit,IgG |
| Dilution : | WB 1:500-2000;IHC 1:50-300; ELISA 2000-20000 |
| Purification : | The antibody was affinity-purified from rabbit serum by affinity-chromatography using specific immunogen. |

Concentration : 1 mg/ml

Storage Stability : -15°C to -25°C/1 year(Do not lower than -25°C)

Observed Band : 20kD

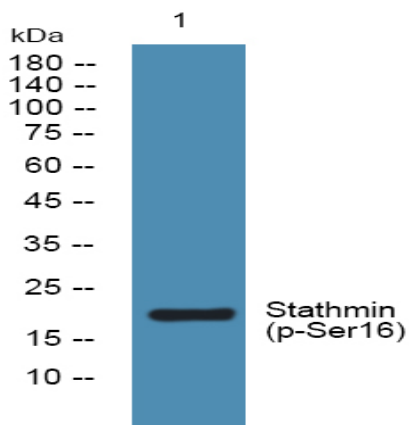
Background : This gene encodes a member of the stathmin family of phosphoproteins. Stathmin proteins function in microtubule dynamics and signal transduction. The encoded protein plays a regulatory role in neuronal growth and is also thought to be involved in osteogenesis. Reductions in the expression of this gene have been associated with Down's syndrome and Alzheimer's disease. Alternatively spliced transcript variants have been observed for this gene. A pseudogene of this gene is located on the long arm of chromosome 6. [provided by RefSeq, Nov 2010],

Function : function:May play a role in neuronal differentiation, and in modulating membrane interaction with the cytoskeleton during neurite outgrowth.,PTM:Sumoylated.,similarity:Belongs to the stathmin family.,subcellular location:Associated with punctate structures in the perinuclear cytoplasm, axons, and growth cones of developing neurons. SCG10 exists in both soluble and membrane-bound forms.,tissue specificity:Neuron specific.,

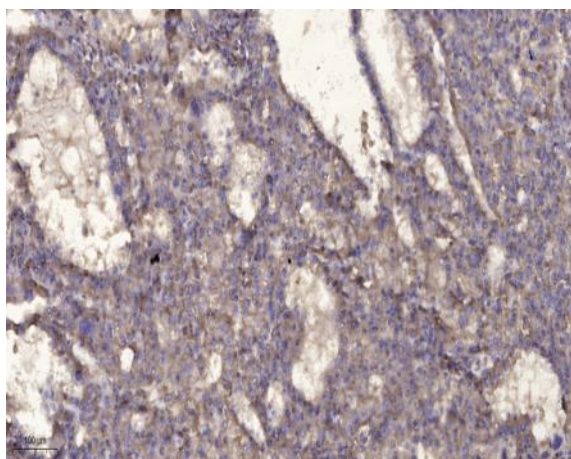
Subcellular Location : Cytoplasm . Cytoplasm, perinuclear region . Cell projection, growth cone. Membrane ; Peripheral membrane protein ; Cytoplasmic side . Cell projection, axon. Golgi apparatus. Endosome . Cell projection, lamellipodium. Associated with punctate structures in the perinuclear cytoplasm, axons, and growth cones of developing neurons. SCG10 exists in both soluble and membrane-bound forms. Colocalized with CIB1 in neurites of developing hippocampal primary neurons (By similarity). Colocalized with CIB1 in the cell body, neuritis and growth cones of neurons. Colocalized with CIB1 to the leading edge of lamellipodia. .

Expression : Neuron specific.

Products Images



Western blot analysis of lysates from U2OS cells, primary antibody was diluted at 1:1000, 4° over night



Immunohistochemical analysis of paraffin-embedded human liver cancer. 1, Antibody was diluted at 1:200(4° overnight). 2, Tris-EDTA,pH9.0 was used for antigen retrieval. 3,Secondary antibody was diluted at 1:200(room temperature, 45min).