

**MCM2 (Phospho Ser139) rabbit pAb**

<b>Catalog No :</b>	YP1397
<b>Reactivity :</b>	Human;Mouse;Rat
<b>Applications :</b>	WB;IHC
<b>Target :</b>	MCM2
<b>Fields :</b>	>>DNA replication;>>Cell cycle
<b>Gene Name :</b>	MCM2 BM28 CCNL1 CDCL1 KIAA0030
<b>Protein Name :</b>	MCM2 (Ser139)
<b>Human Gene Id :</b>	4171
<b>Human Swiss Prot No :</b>	P49736
<b>Mouse Gene Id :</b>	17216
<b>Mouse Swiss Prot No :</b>	P97310
<b>Immunogen :</b>	Synthesized phospho peptide around human MCM2 (Ser139)
<b>Specificity :</b>	This antibody detects endogenous levels of Human Mouse Rat MCM2 (phospho-Ser139)
<b>Formulation :</b>	Liquid in PBS containing 50% glycerol, 0.5% BSA and 0.02% sodium azide.
<b>Source :</b>	Polyclonal, Rabbit,IgG
<b>Dilution :</b>	WB 1:500-2000;IHC 1:50-300
<b>Purification :</b>	The antibody was affinity-purified from rabbit serum by affinity-chromatography using specific immunogen.
<b>Concentration :</b>	1 mg/ml

---

**Storage Stability :** -15°C to -25°C/1 year(Do not lower than -25°C)

**Observed Band :** 120kD

**Cell Pathway :** DNA replication;Cell\_Cycle\_G1S;Cell\_Cycle\_G2M\_DNA;

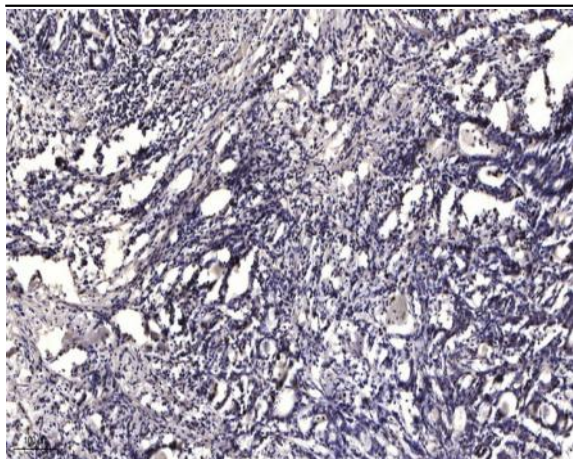
**Background :** The protein encoded by this gene is one of the highly conserved mini-chromosome maintenance proteins (MCM) that are involved in the initiation of eukaryotic genome replication. The hexameric protein complex formed by MCM proteins is a key component of the pre-replication complex (pre\_RC) and may be involved in the formation of replication forks and in the recruitment of other DNA replication related proteins. This protein forms a complex with MCM4, 6, and 7, and has been shown to regulate the helicase activity of the complex. This protein is phosphorylated, and thus regulated by, protein kinases CDC2 and CDC7. Multiple alternatively spliced transcript variants have been found, but the full-length nature of some variants has not been defined. [provided by RefSeq, Oct 2012],

**Function :** function:Acts as a factor that allows the DNA to undergo a single round of replication per cell cycle. Required for the entry in S phase and for cell division.,PTM:Phosphorylated on Ser-108 by ATR in proliferating cells. Ser-108 proliferation is increased by genotoxic agents. Ser-40 is mediated by the CDC7-DBF4 and CDC7-DBF4B complexes, while Ser-53 phosphorylation is only mediated by the CDC7-DBF4 complex.,sequence caution:Translation N-terminally shortened.,similarity:Belongs to the MCM family.,similarity:Contains 1 MCM domain.,subunit:Interacts with DBF4 (By similarity). Interacts with MYST2. May interact with MCM10.,

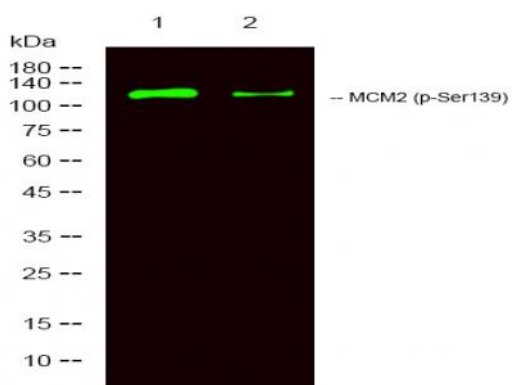
**Subcellular Location :** Nucleus . Chromosome . Associated with chromatin before the formation of nuclei and detaches from it as DNA replication progresses. .

**Expression :** Bone marrow,Brain,Cervix carcinoma,Colon carcinoma,Epitheli

## Products Images



Immunohistochemical analysis of paraffin-embedded human Gastric adenocarcinoma. 1, Antibody was diluted at 1:200(4° overnight). 2, Tris-EDTA,pH9.0 was used for antigen retrieval. 3,Secondary antibody was diluted at 1:200(room temperature, 45min).



Western Blot analysis of 1 K562 treated with LPS, 2 K562,using primary antibody at 1:1000 dilution. Secondary antibody(catalog#:RS23920) was diluted at 1:10000