

## SGTA (Phospho Ser305) rabbit pAb

<b>Catalog No :</b>	YP1487
<b>Reactivity :</b>	Human;Rat;Mouse;
<b>Applications :</b>	WB;ELISA;IHC
<b>Target :</b>	SGTA
<b>Gene Name :</b>	SGTA SGT SGT1
<b>Protein Name :</b>	SGTA (Ser305)
<b>Human Gene Id :</b>	6449
<b>Human Swiss Prot No :</b>	O43765
<b>Mouse Gene Id :</b>	52551
<b>Mouse Swiss Prot No :</b>	Q8BJU0
<b>Rat Gene Id :</b>	64667
<b>Rat Swiss Prot No :</b>	O70593
<b>Immunogen :</b>	Synthesized phospho peptide around human SGTA (Ser305)
<b>Specificity :</b>	This antibody detects endogenous levels of Human SGTA (phospho-Ser305)
<b>Formulation :</b>	Liquid in PBS containing 50% glycerol, 0.5% BSA and 0.02% sodium azide.
<b>Source :</b>	Polyclonal, Rabbit,IgG
<b>Dilution :</b>	WB 1:500-2000;IHC 1:50-300; ELISA 2000-20000
<b>Purification :</b>	The antibody was affinity-purified from rabbit serum by affinity-chromatography using specific immunogen.

**Concentration :** 1 mg/ml

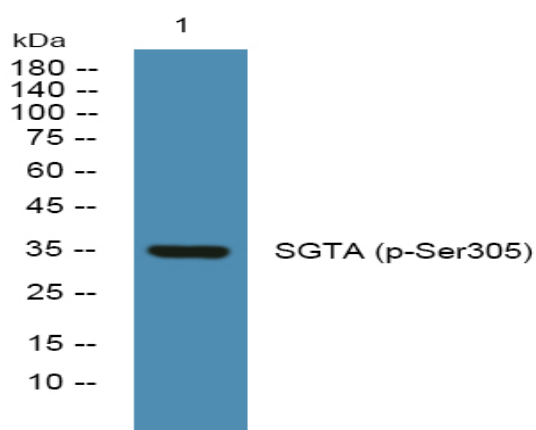
**Storage Stability :** -15°C to -25°C/1 year(Do not lower than -25°C)

**Observed Band :** 35kD

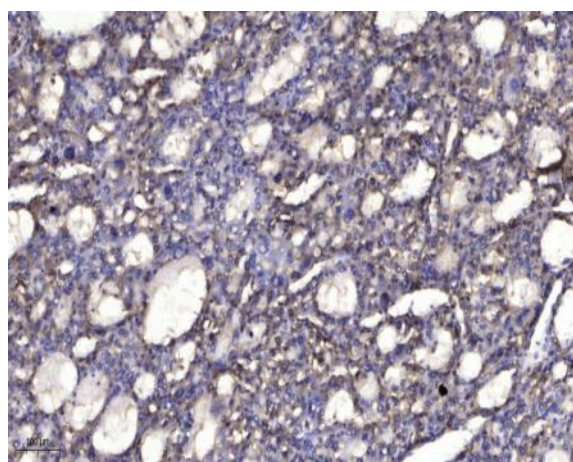
**Subcellular Location :** Cytoplasm . Nucleus . Co-localizes with HSP90AB1 in the cytoplasm. Increased nuclear accumulation seen during cell apoptosis. .

**Expression :** Ubiquitous.

## Products Images



Western blot analysis of lysates from K562 cells, primary antibody was diluted at 1:1000, 4° over night



Immunohistochemical analysis of paraffin-embedded human liver cancer. 1, Antibody was diluted at 1:200(4° overnight). 2, Tris-EDTA,pH9.0 was used for antigen retrieval. 3,Secondary antibody was diluted at 1:200(room temperature, 45min).