

## SGK3 (Phospho Thr320) rabbit pAb

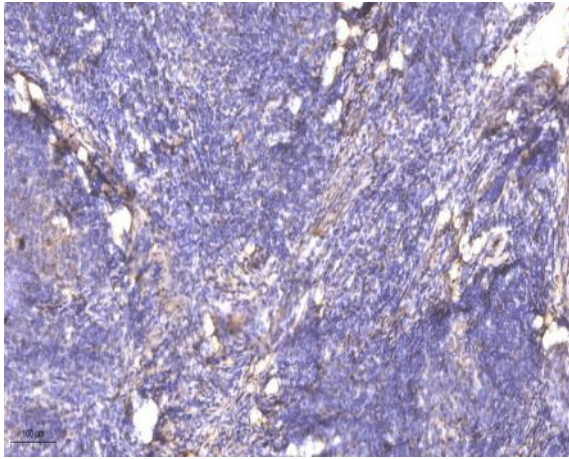
<b>Catalog No :</b>	YP1486
<b>Reactivity :</b>	Human;Rat;Mouse;
<b>Applications :</b>	WB;IHC
<b>Target :</b>	SGK3
<b>Fields :</b>	>>FoxO signaling pathway;>>PI3K-Akt signaling pathway
<b>Gene Name :</b>	SGK3 CISK SGKL
<b>Protein Name :</b>	SGK3 (Thr320)
<b>Human Gene Id :</b>	100533105
<b>Human Swiss Prot No :</b>	Q96BR1
<b>Mouse Gene Id :</b>	170755
<b>Mouse Swiss Prot No :</b>	Q9ERE3
<b>Rat Swiss Prot No :</b>	Q8R4V0
<b>Immunogen :</b>	Synthesized phospho peptide around human SGK3 (Thr320)
<b>Specificity :</b>	This antibody detects endogenous levels of Human SGK3 (phospho-Thr320)
<b>Formulation :</b>	Liquid in PBS containing 50% glycerol, 0.5% BSA and 0.02% sodium azide.
<b>Source :</b>	Polyclonal, Rabbit,IgG
<b>Dilution :</b>	WB 1:500-2000;IHC 1:50-300
<b>Purification :</b>	The antibody was affinity-purified from rabbit serum by affinity-chromatography using specific immunogen.

---

<b>Concentration :</b>	1 mg/ml
<b>Storage Stability :</b>	-15°C to -25°C/1 year(Do not lower than -25°C)
<b>Observed Band :</b>	54kD
<b>Background :</b>	This gene is a member of the Ser/Thr protein kinase family and encodes a phosphoprotein with a PX (phox homology) domain. The protein phosphorylates several target proteins and has a role in neutral amino acid transport and activation of potassium and chloride channels. Alternate transcriptional splice variants, encoding different isoforms, have been characterized. [provided by RefSeq, Jul 2008],
<b>Function :</b>	<p>catalytic activity:ATP + a protein = ADP + a phosphoprotein.,enzyme regulation:Two specific sites, one in the kinase domain (Thr-320) and the other in the C-terminal regulatory region (Ser-486), need to be phosphorylated for its full activation.,function:Involved in the activation of potassium channels. Mediates cell IL-3-dependent survival signals.,similarity:Belongs to the protein kinase superfamily.,similarity:Belongs to the protein kinase superfamily. AGC Ser/Thr protein kinase family.,similarity:Contains 1 AGC-kinase C-terminal domain.,similarity:Contains 1 protein kinase domain.,similarity:Contains 1 PX (phox homology) domain.,subcellular location:Localized in vesicle-like structures and in the early endosome.,tissue specificity:Expressed in most tissues with highest levels in pancreas, kidney liver, heart and brain and lower levels in lung, placenta and skeletal muscle.,</p>
<b>Subcellular Location :</b>	Cytoplasmic vesicle . Early endosome. Recycling endosome. Endosomal localization is a prerequisite for complete kinase activity. It is essential for its colocalization with the kinase responsible for phosphorylating Ser-486 thus allowing PDPK1 phosphorylation of Thr-320 resulting in complete activation of SGK3. Localized in vesicle-like structures and in the early endosome. Colocalizes with SLC9A3/NHE3 in the recycling endosomes.
<b>Expression :</b>	Expressed in most tissues with highest levels in pancreas, kidney liver, heart and brain and lower levels in lung, placenta and skeletal muscle. Expression is higher in ER-positive breast tumors than ER-negative breast tumors.

---

## Products Images



Immunohistochemical analysis of paraffin-embedded human cervical carcinoma. 1, Antibody was diluted at 1:200(4° overnight). 2, Tris-EDTA,pH9.0 was used for antigen retrieval. 3,Secondary antibody was diluted at 1:200(room temperature, 45min).