

SATB1 (Phospho Ser47) rabbit pAb

Catalog No :	YP1478
Reactivity :	Human;Mouse;Rat
Applications :	WB;ELISA;IHC
Target :	SATB1
Gene Name :	SATB1
Protein Name :	SATB1 (Ser47)
Human Gene Id :	6304
Human Swiss Prot No :	Q01826
Mouse Gene Id :	20230
Mouse Swiss Prot No :	Q60611
Immunogen :	Synthesized phospho peptide around human SATB1 (Ser47)
Specificity :	This antibody detects endogenous levels of Human Mouse Rat SATB1 (phospho-Ser47)
Formulation :	Liquid in PBS containing 50% glycerol, 0.5% BSA and 0.02% sodium azide.
Source :	Polyclonal, Rabbit,IgG
Dilution :	WB 1:500-2000;IHC 1:50-300; ELISA 2000-20000
Purification :	The antibody was affinity-purified from rabbit serum by affinity-chromatography using specific immunogen.
Concentration :	1 mg/ml
Storage Stability :	-15°C to -25°C/1 year(Do not lower than -25°C)

Observed Band : 85kD

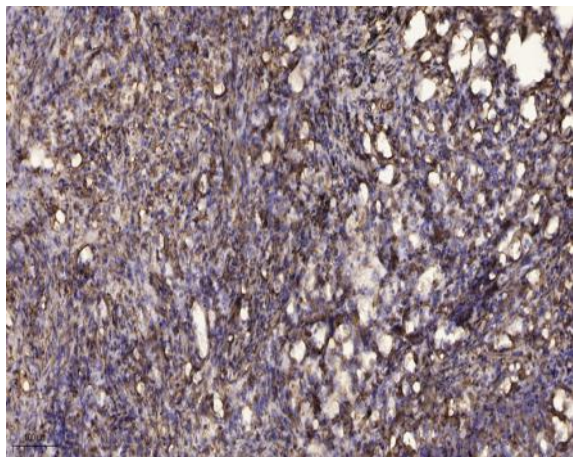
Background : This gene encodes a matrix protein which binds nuclear matrix and scaffold-associated DNAs through a unique nuclear architecture. The protein recruits chromatin-remodeling factors in order to regulate chromatin structure and gene expression. [provided by RefSeq, Apr 2016],

Function : function: Binds to DNA at special AT-rich sequences at nuclear matrix- or scaffold-associated regions. Thought to recognize the sugar-phosphate structure of double-stranded DNA.,PTM: Sumoylated.,similarity: Belongs to the CUT homeobox family.,similarity: Contains 1 homeobox DNA-binding domain.,similarity: Contains 2 CUT DNA-binding domains.,tissue specificity: Expressed predominantly in thymus.,

Subcellular Location : Nucleus matrix . Nucleus, PML body . Organized into a cage-like network anchoring loops of heterochromatin and tethering specialized DNA sequences (PubMed:12692553). When sumoylated, localized in promyelocytic leukemia nuclear bodies (PML NBs) (PubMed:18408014). .

Expression : Expressed predominantly in thymus.

Products Images



Immunohistochemical analysis of paraffin-embedded human Squamous cell carcinoma of lung. 1, Antibody was diluted at 1:200(4° overnight). 2, Tris-EDTA,pH9.0 was used for antigen retrieval. 3,Secondary antibody was diluted at 1:200(room temperature, 45min).