

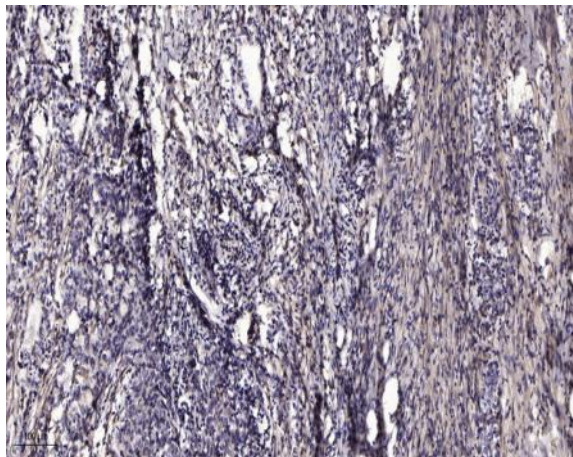
PLC γ 2 (Phospho Tyr759) rabbit pAb

Catalog No :	YP1446
Reactivity :	Human;Mouse
Applications :	WB;IF;ELISA;IHC
Target :	PLCG2
Fields :	>>Inositol phosphate metabolism;>>Metabolic pathways;>>EGFR tyrosine kinase inhibitor resistance;>>ErbB signaling pathway;>>Ras signaling pathway;>>Calcium signaling pathway;>>Chemokine signaling pathway;>>NF-kappa B signaling pathway;>>HIF-1 signaling pathway;>>Phosphatidylinositol signaling system;>>Phospholipase D signaling pathway;>>Axon guidance;>>VEGF signaling pathway;>>Osteoclast differentiation;>>Platelet activation;>>Neutrophil extracellular trap formation;>>C-type lectin receptor signaling pathway;>>Natural killer cell mediated cytotoxicity;>>B cell receptor signaling pathway;>>Fc epsilon RI signaling pathway;>>Fc gamma R-mediated phagocytosis;>>Leukocyte transendothelial migration;>>Neurotrophin signaling pathway;>>Inflammatory mediator regulation of TRP channels;>>Thyroid hormone signaling pathway;>>AGE-RAGE signaling pathway in diabetic complications;>>Growth hormone synthesis, secretion and action;>>Vibrio cholerae infection;>>Epithelial cell signaling in Helicobacter py
Gene Name :	PLCG2
Protein Name :	PLC γ 2 (Tyr759)
Human Gene Id :	5336
Human Swiss Prot No :	P16885
Mouse Gene Id :	234779
Mouse Swiss Prot No :	Q8CIH5
Rat Gene Id :	29337
Rat Swiss Prot No :	P24135

Immunogen :	<u>Synthesized phospho peptide around human PLCγ2 (Tyr759)</u>
Specificity :	<u>This antibody detects endogenous levels of Human Mouse PLCγ2 (phospho-Tyr759)</u>
Formulation :	<u>Liquid in PBS containing 50% glycerol, 0.5% BSA and 0.02% sodium azide.</u>
Source :	<u>Polyclonal, Rabbit,IgG</u>
Dilution :	<u>WB 1:500-2000; IF ICC 1:50-200;ELISA 1:2000-20000;IHC 1:50-200</u>
Purification :	<u>The antibody was affinity-purified from rabbit serum by affinity-chromatography using specific immunogen.</u>
Concentration :	<u>1 mg/ml</u>
Storage Stability :	<u>-15°C to -25°C/1 year(Do not lower than -25°C)</u>
Observed Band :	<u>148kD</u>
Cell Pathway :	<u>Inositol phosphate metabolism;ErbB_HER;Calcium;Phosphatidylinositol signaling system;VEGF;Natural killer cell mediated cytotoxicity;B_Cell_Antigen;Fc epsilon RI;Fc gamma R-mediated phagocytosis;Leukoc</u>
Background :	<u>The protein encoded by this gene is a transmembrane signaling enzyme that catalyzes the conversion of 1-phosphatidyl-1D-myo-inositol 4,5-bisphosphate to 1D-myo-inositol 1,4,5-trisphosphate (IP3) and diacylglycerol (DAG) using calcium as a cofactor. IP3 and DAG are second messenger molecules important for transmitting signals from growth factor receptors and immune system receptors across the cell membrane. Mutations in this gene have been found in autoinflammation, antibody deficiency, and immune dysregulation syndrome and familial cold autoinflammatory syndrome 3. [provided by RefSeq, Mar 2014],</u>
Function :	<u>catalytic activity:1-phosphatidyl-1D-myo-inositol 4,5-bisphosphate + H(2)O = 1D-myo-inositol 1,4,5-trisphosphate + diacylglycerol.,cofactor:Calcium.,function:The production of the second messenger molecules diacylglycerol (DAG) and inositol 1,4,5-trisphosphate (IP3) is mediated by activated phosphatidylinositol-specific phospholipase C enzymes. It is a crucial enzyme in transmembrane signaling.,PTM:Phosphorylated on tyrosine residues; upon ligand-induced activation of a variety of growth factor receptors and immune system receptors. Increases phospholipase activity.,similarity:Contains 1 C2 domain.,similarity:Contains 1 PH domain.,similarity:Contains 1 PI-PLC X-box domain.,similarity:Contains 1 PI-PLC Y-box domain.,similarity:Contains 1 SH3 domain.,similarity:Contains 2 SH2 domains.,</u>
Subcellular	<u>intracellular,cytosol,plasma membrane,extracellular exosome,</u>

Expansion : Lymph, Lymphoblast, Spleen, T-cell,

Products Images



Immunohistochemical analysis of paraffin-embedded human Gastric adenocarcinoma. 1, Antibody was diluted at 1:200(4° overnight). 2, Tris-EDTA,pH9.0 was used for antigen retrieval. 3,Secondary antibody was diluted at 1:200(room temperature, 45min).