

MERIT40 (Phospho Ser29) rabbit pAb

Catalog No :	YP1401
Reactivity :	Human;Rat;Mouse;
Applications :	WB;IHC
Target :	MERIT40
Fields :	>>Homologous recombination
Gene Name :	BABAM1 C19orf62 MERIT40 NBA1 HSPC142
Protein Name :	MERIT40 (Ser29)
Human Gene Id :	29086
Human Swiss Prot No :	Q9NWW8
Mouse Gene Id :	68251
Mouse Swiss Prot No :	Q3UI43
Rat Gene Id :	290631
Rat Swiss Prot No :	Q5XIJ6
Immunogen :	Synthesized phospho peptide around human MERIT40 (Ser29)
Specificity :	This antibody detects endogenous levels of Human MERIT40 (phospho-Ser29)
Formulation :	Liquid in PBS containing 50% glycerol, 0.5% BSA and 0.02% sodium azide.
Source :	Polyclonal, Rabbit,IgG
Dilution :	WB 1:500-2000;IHC 1:50-300
Purification :	The antibody was affinity-purified from rabbit serum by affinity-chromatography

using specific immunogen.

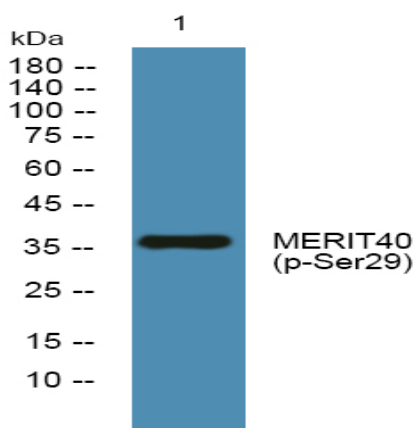
Concentration : 1 mg/ml

Storage Stability : -15°C to -25°C/1 year(Do not lower than -25°C)

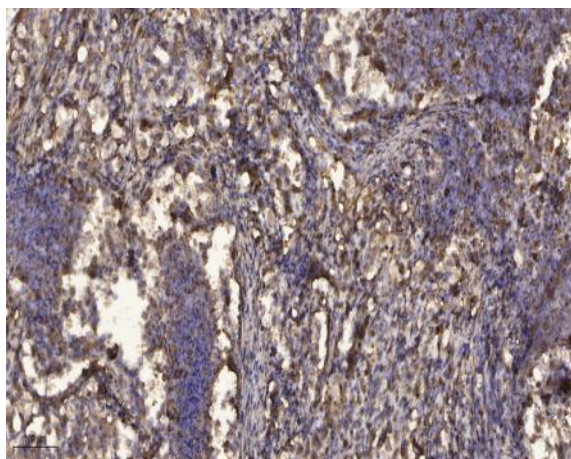
Observed Band : 36kD

Subcellular Location : Cytoplasm . Nucleus . Localizes at sites of DNA damage at double-strand breaks (DSBs). .

Products Images



Western blot analysis of lysates from SH-SY5Y cells, primary antibody was diluted at 1:1000, 4° over night



Immunohistochemical analysis of paraffin-embedded human Squamous cell carcinoma of lung. 1, Antibody was diluted at 1:200(4° overnight). 2, Tris-EDTA,pH9.0 was used for antigen retrieval. 3,Secondary antibody was diluted at 1:200(room temperature, 45min).